

IB Drive Lock Two Piece Counter Flashing

Product Description:

IB Drive-Lock Two-piece counter flashing system with surface mounted reglet / receiver punched for fastening 12" on center. Snap-on metal skirt flashing can be removed for re-roofing or maintenance.

Materials:

Reglets are primarily made from mill aluminum or pre-coat Kynar 500® aluminum sheet. The two piece reglet and flashing details are usually fabricated with an .050" reglet head and an .032" flashing. Special colors or finishes are available. Finish setups or minimum quantities may be required. Copper or stainless steel reglets by request. Finishes are: Natural mill aluminum, pre-coat Kynar 500® - from the manufacturers standard color chart, post-coat Kynar 500® industry standard two coat colors.

Packaging: (1 unit)

- Receiver piece
- Snap Fascia
- Splice Piece

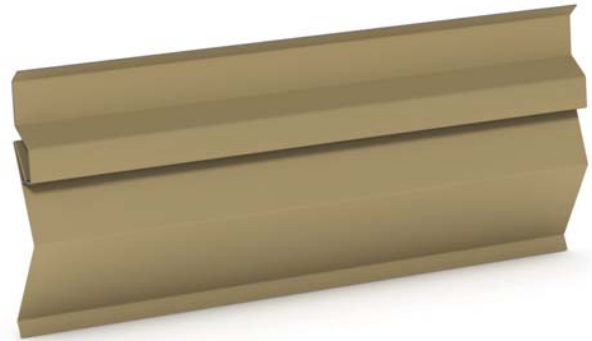
Finish:

- Mill Finished
- Pre Finished Kynar 500®
- Post Finished Kynar 500®
- Pre Finished Anodize
- Post Finished Anodize

Available Colors:

Manufacturers standard color chart

Front



Back

