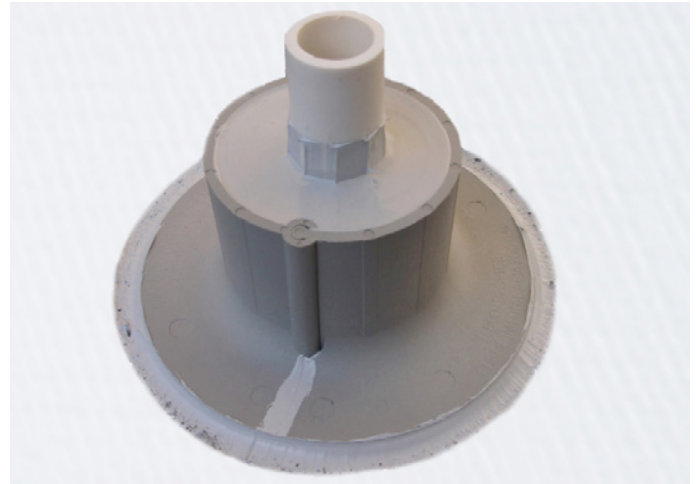


Product Description:

IB E-Curb System penetration seals replace old-style metal pitch pans with versatile precast components and pourable sealants. The E-Curb System can usually be installed in under 15 minutes and is available in convenient kits.

E-Curbs supplied by IB Roof Systems are approved for use with IB PVC single ply roofing membranes. E-Curbs are highly versatile for sealing penetrations around solar panel mounts, HVAC, Electrical, and any type of structural supports.

When installed properly, this system forms a durable, waterproof rubber seal around penetrations.

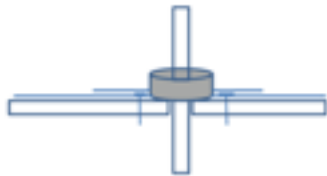


Special Characteristics

- Rapid installation - “Slip-fit” light weight curb design reduces labor significantly.
- Excellent adhesion to most roofing materials.
- Service Temperature -40°F to 200°F (-40°C to 93°C)
- 1-Part® pourable sealer accommodates movement and is ideal for use on details with this condition.
- For sloped roof applications, substitute DuraLink 50™ non-slump adhesive/sealant for 1-Part and M-1®

E-Curb System Components

- E-Curb exterior rings, straights, and corners.
- M-1 Structural Adhesive/ Sealant used for bonding the E-Curb components, sealing and priming the penetration.
- 1-Part “moisture cure” pourable sealer, used to form a durable, water-tight seal around the roof penetration. US Patent No. RE41,586



IB E-Curb System Kit Contents		
4" E-Curb System Kit	6" E-Curb System Kit	Universal E-Curb System Kit
(4) 4" E-Curb exterior rings	(3) 6" E-Curb exterior rings	(4) 2" E-Curb exterior corners (4) 3" E-Curb exterior straights (4) 8" E-Curb exterior straights
(2) tubes M1 Structural Adhesive/ Sealant 10.1 oz. each	(2) tubes M1 Structural Adhesive/Sealant 10.1 oz. each	(2) tubes M1 Structural Adhesive/Sealant 10.1 oz. each
(1) ½ gallon pouch 1-Part Pourable Sealant	(2) ½ gallon pouch 1-Part Pourable Sealant	(2) ½ gallon pouch 1-Part Pourable Sealant