

## Technical Data Sheet

# IB® Clad Drip Edge Stainless Steel Metal

IB Roof Systems®

### Product Description:

IB Clad Drip Edge Stainless Steel Metal is fabricated with a durable 45 mil non-reinforced IB PVC film with acrylic finish, laminated to 24 gauge, SAE 304 stainless steel sheet metal. It is formed into a standard metal drip edge profile with an open-hem kick-out at the bottom to provide a corrosion resistant, heat weld-able perimeter roof edge termination for IB Roofing Systems.

### Sizes:

Standard sizes available in 2.5" and 4" drip edge. Custom sizes available as a special order.

### Packaging:

Sold per 10' section

Available in 100-piece cardboard box

### Features:

- Factory fabricated edge metal ready to install onsite
- Durable 45 mil IB PVC non-reinforced film laminated to corrosion resistant 24 gauge, SAE 304 stainless steel metal
- Acrylic finish top surface
- Open hem kick out
- Additional sizes and profiles available through custom order to your specifications

### Available Colors:

Standard Clad Finish for SAE 304 stainless steel in White

White

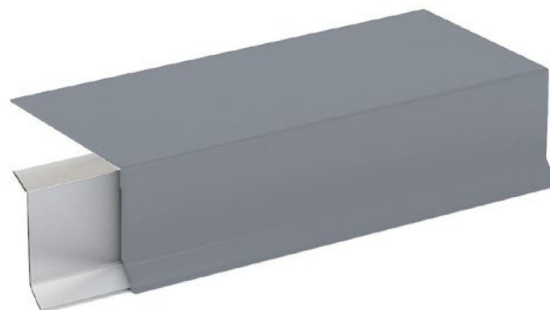
### Accessory Metal Cleat:

Factory fabricated 22-gauge ASAE 304 stainless steel cleats are sold separately and are custom manufactured for use with IB Clad Drip Edge Stainless Steel Metal produced for installations requiring a continuous cleat. They are formed to profile with a 1/2" deck flange.

### Packaging:

Shipped in cardboard boxes.

\*Cleat Available Separately



	DRIP EDGE	2.5"	4"
	A - FLANGE	3"	3"
	B - COVERAGE	2"	3.5"
	C - FACE	2.5"	4"
	D - HEM	.50"	.50"
	LENGTH	10'	10'
	WEIGHT	5.5 LBS	7.5 LBS

ANSI/SPRI ES-1 Tested Metals (Report #103942901MID-001R0)		
Product ID	Attachment	Max. Load / Max. Design Pressure*
2.5" Clad Drip Edge Stainless Steel Metal with 22 ga. stainless steel cleat	Min. 1-1/2" smooth shank roofing nail 6" o.c.; or IB HD #14 Fastener 12" o.c. Min. penetration 1-1/2" into nailer/substrate	550 lbs / 225 MDP
4" Clad Drip Edge Stainless Steel Metal with 22 ga. stainless steel cleat	Min. 1-1/2" smooth shank roofing nail 6" o.c.; or IB HD #14 Fastener 12" o.c. Min. penetration 1-1/2" into nailer/substrate	550 lbs / 225 MDP
*Reflects safety factor of 2 applied. Building owner, project designer, engineer, or contractor is responsible to determine appropriate safety factor for project design conditions.		

Product details stated are nominal as manufactured, and the results of tests and/or calculations and therefore are non-binding and do not represent a guarantee or warranted characteristics. User and/or designer are responsible for confirming suitable performance for specific application and conforming with all applicable laws and regulations.