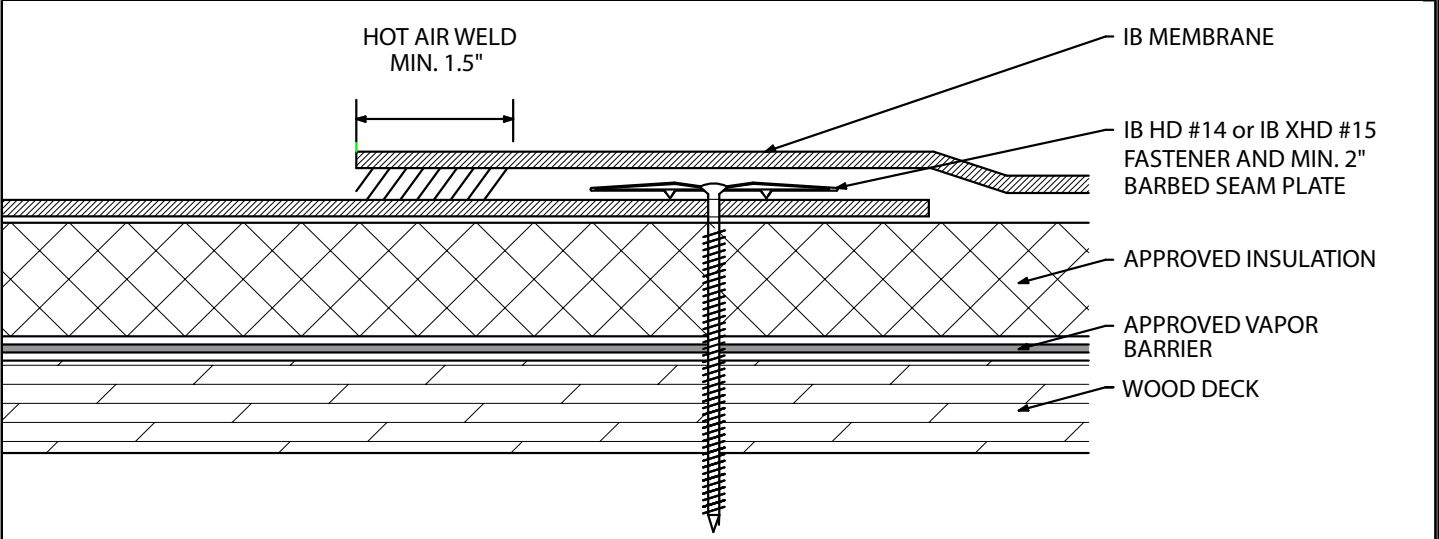


Mechanically Attached Membrane - Insulation - Vapor Barrier - Wood Deck (New or Tear-Off)



Fire Rating / Max. Slope	Deck Type	Insulation / Vapor Barrier		IB Membrane		Max. Design Pressure**
		Type	Attachment	Fasteners	Attachment	
Not Rated	7/16" OSB	IB Approved Insulation & IB Approved Vapor Barrier	Min. IB SD #12, 3" IB Insulation Plate (6 per 4' x 8')	IB HD #14 or XHD #15, IB 2" Barbed Seam Plate	In-Seam 6" o.c. Min. x 67"	Minimum Req for IB Warranty
'Class 'A' ½":12"	5/8" OSB	IB Approved Insulation & IB Approved Vapor Barrier	Min. IB SD #12, 3" IB Insulation Plate (6 per 4' x 8')	IB HD #14 or XHD #15, IB 2" Barbed Seam Plate	In-Seam 12" o.c. Min. x 67"	Minimum Req for IB Warranty
'Class 'A' ½":12"	1/2" Plywood	IB Approved Insulation & IB Approved Vapor Barrier	Min. IB SD #12, 3" IB Insulation Plate (6 per 4' x 8')	IB HD #14 or XHD #15, IB 2" Barbed Seam Plate	In-Seam 12" o.c. Min. x 67"	Minimum Req for IB Warranty
'Class 'A' ½":12"	1/2" Plywood	IB Approved Insulation & IB Approved Vapor Barrier	Min. IB SD #12, 3" IB Insulation Plate (6 per 4' x 8')	IB HD #14 or XHD #15, IB 2" Barbed Seam Plate	In-Seam 6" o.c. Min. x 67"	-37.5 psf (Class 75)
'Class 'A' ½":12"	19/32" Plywood	IB Approved Insulation & IB Approved Vapor Barrier	Min. IB SD #12, 3" IB Insulation Plate (6 per 4' x 8')	IB HD #14 or XHD #15, IB 2" Barbed Seam Plate	In-Seam 12" o.c. Min. x 67"	-30.0 psf (Class 60)
'Class 'A' ½":12"	19/32" Plywood	IB Approved Insulation & IB Approved Vapor Barrier	Min. IB SD #12, 3" IB Insulation Plate (6 per 4' x 8')	IB HD #14 or XHD #15, IB 2" Barbed Seam Plate	In-Seam 6" o.c. Min. x 67"	-45.0 psf (Class 90)
'Class 'A' ½":12"	19/32" Plywood	IB Approved Insulation & IB Approved Vapor Barrier	Min. IB SD #12, 3" IB Insulation Plate (6 per 4' x 8')	IB XHD #15, IB 2-3/8" Barbed Seam Plate	In-Seam 6" o.c. Min. x 67"	-67.5 psf (Class 135)
'Class 'A' ½":12"	19/32" Plywood	IB Approved Insulation & IB Approved Vapor Barrier	Min. IB SD #12, 3" IB Insulation Plate (6 per 4' x 8')	IB XHD #15, IB 2-3/8" Barbed Seam Plate	In-Seam 6" o.c. Min. x 31"	-127.5 psf (Class 255)

Approved Vapor Barrier: IBarrier SA Membrane, SopraVap'r SA, applied using self-adhesive techniques
Approved Insulation: IB EnergyBoard II or III, Atlas AC Foam II or III; H-Shield or H-Shield CG; or Structodek HD Primed
Fire Classification Note: 'UL Class 'A' Classification up to ½":12" when utilized with any of the above listed Vapor Barrier and minimum 1" thickness H-Shield CG, or minimum 3" thickness AC Foam III or IB EnergyBoard III. *Other IB Approved Insulations or lesser thicknesses may not achieve UL Classification.
****Refer to Substrate Resistance Table for required pull-out values.**

For additional information about IB Roof Systems requirements, recommendations, installation details, approvals, and limitations for the above assemblies, please refer to the latest edition of the IB Roof Systems Specifications Manual. For Technical Services please contact IB Technical Department at 800-426-1626.

Membranes:	Membrane Color:					Warranty Length***			Warranty Type***
IB PVC Single-Ply 50 Mil	White*	Gray	Tan	Bronze	ChemGuard*	10 Year	15 Year	20 Year	Total Systems - No Dollar Limit (TSW)
IB PVC Single-Ply 60 Mil	White*	Cool Sand*	Cool Stone*	Gray	Tan	15 Year	20 Year	25 Year	Warranty Plus (WP)
IB PVC Single-Ply 80 Mil	White*	Gray	Tan	Bronze	ChemGuard*	20 Year	25 Year	30 Year	Commercial Limited Material Warranty (CLMW)
									Residential Limited Material Warranty (RLMW)

*Meets CRRC, Title 24 & EnergyStar Standards

***Refer to Warranty Selection Guide for Warranty Riders, Term Length Limitations, and eligibility requirements of the Warranty Program

Submitted By:

Address:

Email:

Project Name:

Address: