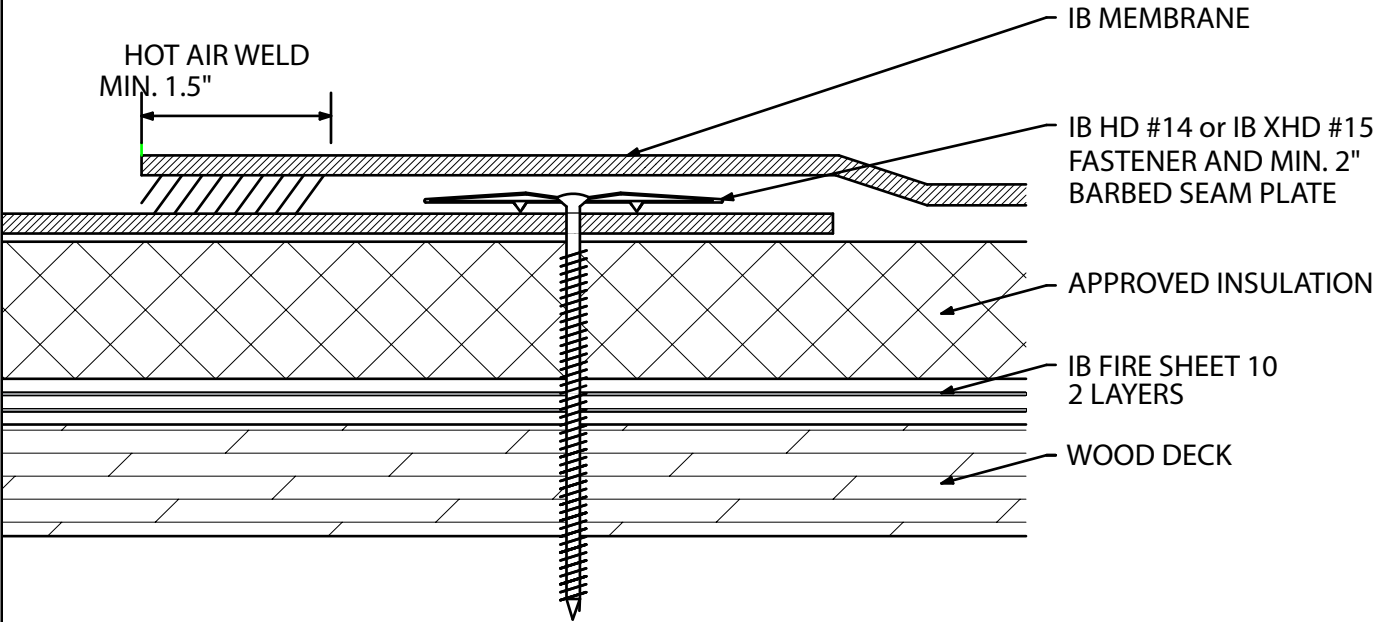


Mechanically Attached Membrane - Insulation - 2 Layer Fire Sheet - Wood Deck (New or Tear-Off)



Fire Rating / Max. Slope	Deck Type	Insulation / (2) Fire Sheet		IB Membrane		Max. Design Pressure**
		Type	Attachment	Fasteners	Attachment	
Not Rated	7/16" OSB	IB Approved Insulation & (2) IB Fire Sheet 10	Min. IB SD #12, 3" IB Insulation Plate (6 per 4' x 8')	IB HD #14 or XHD #15, IB 2" Barbed Seam Plate	In-Seam 6" o.c. Min. x 67"	Minimum Req for IB Warranty
'Class "A" 3/4":12"	5/8" OSB	IB Approved Insulation & (2) IB Fire Sheet 10	Min. IB SD #12, 3" IB Insulation Plate (6 per 4' x 8')	IB HD #14 or XHD #15, IB 2" Barbed Seam Plate	In-Seam 12" o.c. Min. x 67"	Minimum Req for IB Warranty
'Class "A" 3/4":12"	1/2" Plywood	IB Approved Insulation & (2) IB Fire Sheet 10	Min. IB SD #12, 3" IB Insulation Plate (6 per 4' x 8')	IB HD #14 or XHD #15, IB 2" Barbed Seam Plate	In-Seam 12" o.c. Min. x 67"	Minimum Req for IB Warranty
'Class "A" 3/4":12"	1/2" Plywood	IB Approved Insulation & (2) IB Fire Sheet 10	Min. IB SD #12, 3" IB Insulation Plate (6 per 4' x 8')	IB HD #14 or XHD #15, IB 2" Barbed Seam Plate	In-Seam 6" o.c. Min. x 67"	-37.5 psf (Class 75)
'Class "A" 3/4":12"	19/32" Plywood	IB Approved Insulation & (2) IB Fire Sheet 10	Min. IB SD #12, 3" IB Insulation Plate (6 per 4' x 8')	IB HD #14 or XHD #15, IB 2" Barbed Seam Plate	In-Seam 12" o.c. Min. x 67"	-30.0 psf (Class 60)
'Class "A" 3/4":12"	19/32" Plywood	IB Approved Insulation & (2) IB Fire Sheet 10	Min. IB SD #12, 3" IB Insulation Plate (6 per 4' x 8')	IB HD #14 or XHD #15, IB 2" Barbed Seam Plate	In-Seam 6" o.c. Min. x 67"	-45.0 psf (Class 90)

Approved Insulation: IB EnergyBoard II or III, Atlas AC Foam II or III; H-Shield or H-Shield CG; or Structodek HD Primed
Fire Classification Note: 'UL Class 'A' Classification up to ¾":12" when utilized with two layers of IB Fire Sheet 10 and any IB Approved, UL Classified Insulation, any thickness (except EPS and wood fiberboard). 'Other IB Approved Insulations may not achieve UL Classification.
**Refer to Substrate Resistance Table for required pull-out values.

For additional information about IB Roof Systems requirements, recommendations, installation details, approvals, and limitations for the above assemblies, please refer to the latest edition of the IB Roof Systems Specifications Manual. For Technical Services please contact IB Technical Department at 800-426-1626.

Membranes:	Membrane Color:					Warranty Length***			Warranty Type***
IB PVC Single-Ply 50 Mil	White*	Gray	Tan	Bronze	ChemGuard*	10 Year	15 Year	20 Year	Total Systems - No Dollar Limit (TSW) Warranty Plus (WP) Commercial Limited Material Warranty (CLMW) Residential Limited Material Warranty (RLMW)
IB PVC Single-Ply 60 Mil	White*	Cool Sand*	Cool Stone*	Gray	Tan	15 Year	20 Year	25 Year	
IB PVC Single-Ply 80 Mil	White*	Gray	Tan	Bronze	ChemGuard*	15 Year	20 Year	25 Year	