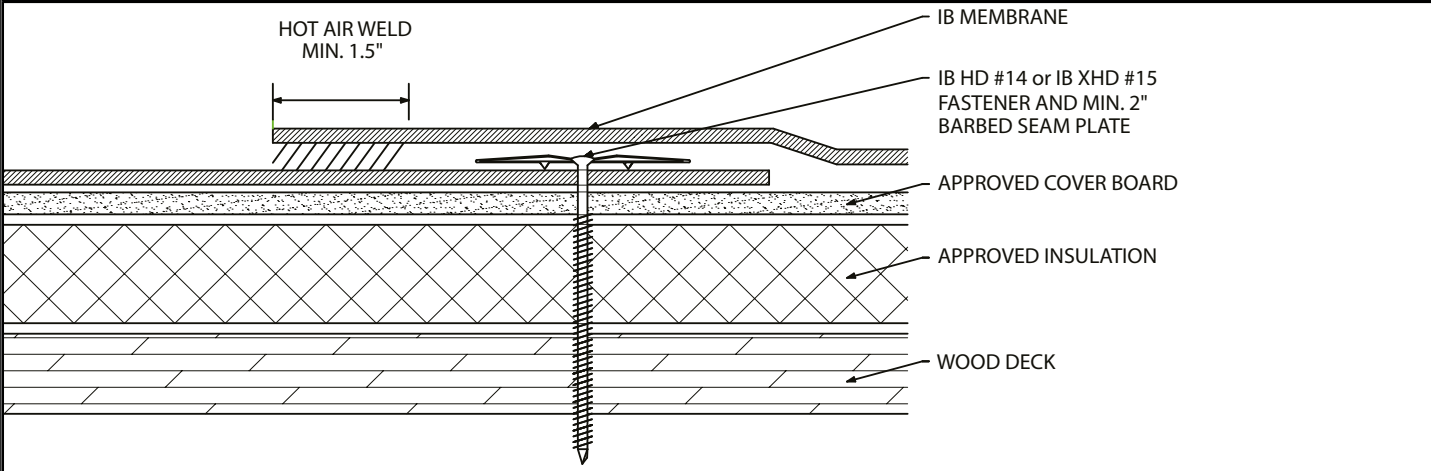


Mechanically Attached Membrane - Cover Board - Insulation - Wood Deck (New or Tear-Off)



Fire Rating / Max. Slope		Deck Type	Cover Board/Insulation		IB Membrane		Max. Design Pressure**
			Type	Attachment	Fasteners	Attachment	
	Not Rated	7/16" OSB	Approved Cover Board & Approved Insulation	Min. IB SD #12, 3" IB Insulation Plate (6 per 4' x 8')	IB HD #14 or XHD #15, IB 2" Barbed Seam Plate	In-Seam 6" o.c. Min. x 67"	Minimum Req for IB Warranty
	'Class "A" Unlimited	5/8" OSB	Approved Cover Board & Approved Insulation	Min. IB SD #12, 3" IB Insulation Plate (6 per 4' x 8')	IB HD #14 or XHD #15, IB 2" Barbed Seam Plate	In-Seam 12" o.c. Min. x 67"	Minimum Req for IB Warranty
	'Class "A" Unlimited	1/2" Plywood	Approved Cover Board & Approved Insulation	Min. IB SD #12, 3" IB Insulation Plate (6 per 4' x 8')	IB HD #14 or XHD #15, IB 2" Barbed Seam Plate	In-Seam 12" o.c. Min. x 67"	Minimum Req for IB Warranty
	'Class "A" Unlimited	1/2" Plywood	Approved Cover Board & Approved Insulation	Min. IB SD #12, 3" IB Insulation Plate (6 per 4' x 8')	IB HD #14 or XHD #15, IB 2" Barbed Seam Plate	In-Seam 6" o.c. Min. x 67"	-37.5 psf (Class 75)
	'Class "A" Unlimited	19/32" Plywood	Approved Cover Board & Approved Insulation	Min. IB SD #12, 3" IB Insulation Plate (6 per 4' x 8')	IB HD #14 or XHD #15, IB 2" Barbed Seam Plate	In-Seam 12" o.c. Min. x 67"	-30.0 psf (Class 60)
	'Class "A" Unlimited	19/32" Plywood	Approved Cover Board & Approved Insulation	Min. IB SD #12, 3" IB Insulation Plate (6 per 4' x 8')	IB HD #14 or XHD #15, IB 2" Barbed Seam Plate	In-Seam 6" o.c. Min. x 67"	-45.0 psf (Class 90)
	'Class "A" Unlimited	19/32" Plywood	Approved Cover Board & Approved Insulation	Min. IB SD #12, 3" IB Insulation Plate (6 per 4' x 8')	IB XHD #15, IB 2-3/8" Barbed Seam Plate	In-Seam 6" o.c. Min. x 67"	-67.5 psf (Class 135)
	'Class "A" Unlimited	19/32" Plywood	Approved Cover Board & Approved Insulation	Min. IB SD #12, 3" IB Insulation Plate (6 per 4' x 8')	IB XHD #15, IB 2-3/8" Barbed Seam Plate	In-Seam 6" o.c. Min. x 31"	-127.5 psf (Class 255)

**Approved Insulation:** IB EnergyBoard II or III, or IB Approved UL Classified Polyisocyanurate, IB Approved UL Classified Expanded Polystyrene, IB Approved UL Classified Extruded Polystyrene Insulation

**Approved Cover Board:** DensDeck, DensDeck Prime, DensDeck StormX, Securock Ultralight Glass-Mat, Securock Ultralight Coated Glass-Mat, Securock Gypsum Fiber Board, DexCell Glass-Mat Roof Board, or DexCell FA Glass Mat Roof Board, minimum 1/4" thickness; or minimum 7/16" DexCell Cement Board; minimum 1/2" gypsum board; minimum 1/2" IB HD ISO or HShield HD ISO; or minimum 1/2" thick Structodek HD Primed

**Fire Classification Note:** 'UL Class 'A' with unlimited slope when utilized with any of the following gypsum cover boards: minimum 1/2" DensDeck, DensDeck Prime, Securock Ultralight Glass-Mat, Securock Ultralight Coated Glass-Mat, DexCell Glass-Mat Roof Board, or DexCell FA Glass Mat Roof Board, or minimum 7/16" DexCell Cement Board or minimum 1/2" gypsum board. 'UL Class 'A' up to 4":12" when utilized with minimum 1/2" Securock Gypsum Fiber Board. 'UL Class 'A' up to 1/2":12" when utilized with minimum 1/2" H-Shield HD ISO over any UL Classified insulation (except expanded or extruded polystyrene), any combination, any thickness, may be used below the 1/2 in. minimum thickness. 'UL Class 'A' up to 1/4":12" when utilized with minimum 1/4" Securock Gypsum Fiber Board. \*Use of other IB Approved Insulations and/or IB Approved Cover Boards may not achieve UL Classification.

**\*\*Refer to Substrate Resistance Table for required pull-out values.**

For additional information about IB Roof Systems requirements, recommendations, installation details, approvals, and limitations for the above assemblies, please refer to the latest edition of the IB Roof Systems Specifications Manual. For Technical Services please contact IB Technical Department at 800-426-1626.

Membranes:	Membrane Color:					Warranty Length***			Warranty Type***	
IB PVC Single-Ply 50 Mil	White*	Gray	Tan	Bronze	ChemGuard*	10 Year	15 Year	20 Year	Total Systems - No Dollar Limit (TSW)	
IB PVC Single-Ply 60 Mil	White*	Cool Sand*	Cool Stone*	Gray	Tan	15 Year	20 Year	25 Year	Warranty Plus (WP)	
IB PVC Single-Ply 80 Mil	White*	Gray	Tan	Bronze	ChemGuard*	20 Year	25 Year	30 Year	Commercial Limited Material Warranty (CLMW)	Residential Limited Material Warranty (RLMW)

\*Meets CRRC, Title 24 & EnergyStar Standards

\*\*\*Refer to Warranty Selection Guide for Warranty Riders, Term Length Limitations, and eligibility requirements of the Warranty Program

Submitted By:  
  
Address:  
  
Email:

Project Name:  
  
Address:

