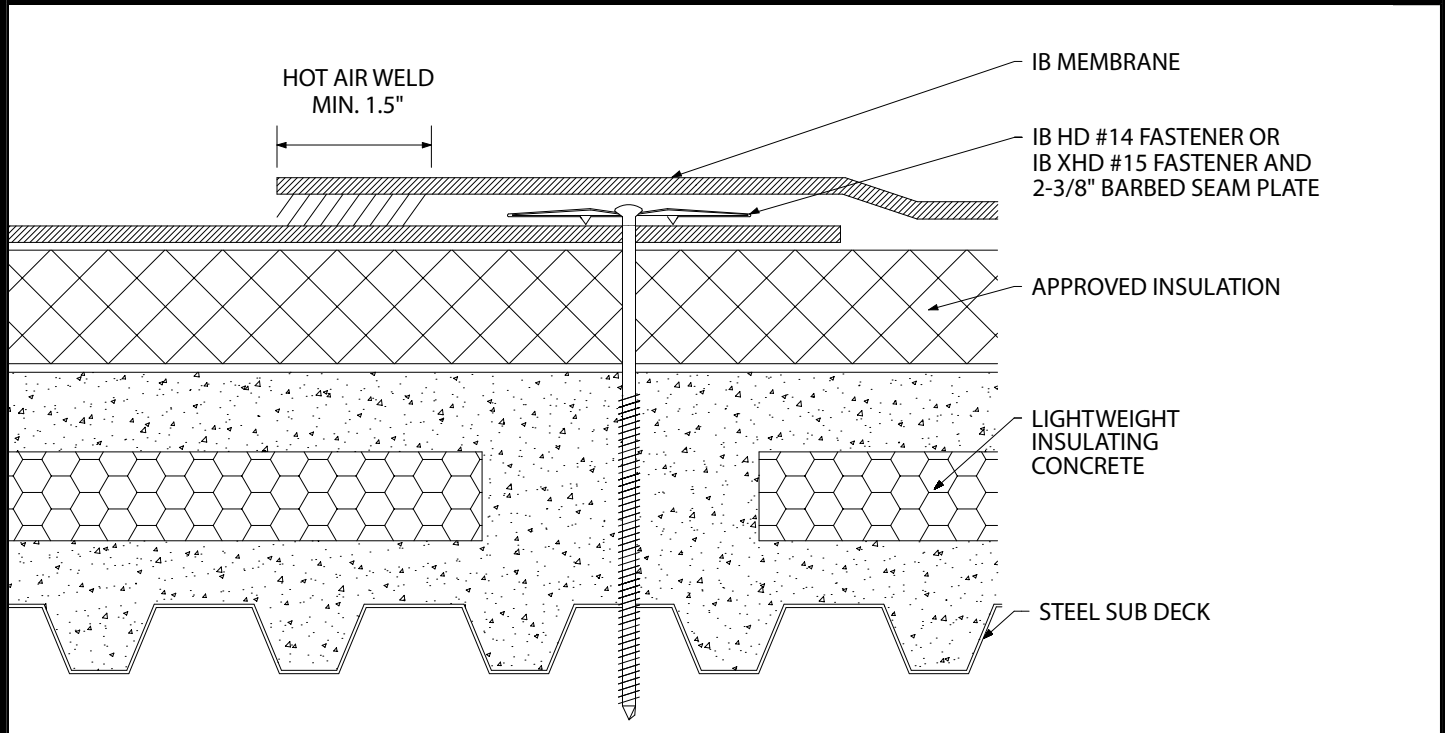




Mechanically Attached Membrane - Insulation - Lightweight Concrete (Tear Off)



Fire Rating / Max. Slope	Deck Type	Insulation		IB Membrane		Max. Design Pressure**
		Type	Attachment	Fasteners	Attachment	
'Class "A" 2-1/2":12"	Lightweight Concrete/ Steel	Approved IB Insulation	Min. IB SD #12, 3" IB Insulation Plate (6 per 4' x 8')	IB HD #14 or XHD #15, IB 2-3/8" Barbed Seam Plate	In-Seam 18" o.c. Min. x 67"	Minimum Req. for IB Warranty
'Class "A" 2-1/2":12"	Lightweight Concrete/ Steel	Approved IB Insulation	Min. IB SD #12, 3" IB Insulation Plate (6 per 4' x 8')	IB HD #14 or XHD #15, IB 2-3/8" Barbed Seam Plate	In-Seam 12" o.c. Min. x 67"	Minimum Req. for IB Warranty
'Class "A" 2-1/2":12"	Lightweight Concrete/ Steel	Approved IB Insulation	Min. IB SD #12, 3" IB Insulation Plate (6 per 4' x 8')	IB HD #14 or XHD #15, IB 2-3/8" Barbed Seam Plate	In-Seam 6" o.c. Min. x 67"	Minimum Req. for IB Warranty
'Class "A" 2-1/2":12"	Lightweight Concrete/ Steel	Approved IB Insulation	Min. IB SD #12, 3" IB Insulation Plate (6 per 4' x 8')	IB HD #14 or XHD #15, IB 2-3/8" Barbed Seam Plate	In-Seam 6" o.c. Min. x 31"	Minimum Req. for IB Warranty

Approved Insulation: IB EnergyBoard II or III; Atlas AC Foam II or III; H-Shield or H-Shield CG; or IB Approved UL Classified Polyisocyanurate

Fire Classification Note: ¹UL Class 'A' up to 2-1/2":12" when utilized with minimum 1" thickness of IB EnergyBoard II or III, or Atlas AC Foam II or III. ²UL Class 'A' Classification up to 1":12" when utilized with minimum 1" thickness of H-Shield ISO or H-Shield CG. ³Other IB Approved Insulations may not achieve UL Classification.

**Refer to Substrate Resistance Table for required pull-out values.

For additional information about IB Roof Systems requirements, recommendations, installation details, approvals, and limitations for the above assemblies, please refer to the latest edition of the IB Roof Systems Specifications Manual. For Technical Services please contact IB Technical Department at 800-426-1626.

Membranes:	Membrane Color:					Warranty Length***			Warranty Type***	
IB PVC Single-Ply 50 Mil	White*	Gray	Tan	Bronze	ChemGuard*	10 Year	15 Year	20 Year	Total Systems - No Dollar Limit (TSW) Warranty Plus (WP) Commercial Limited Material Warranty (CLMW) Residential Limited Material Warranty (RLMW)	
IB PVC Single-Ply 60 Mil	White*	Cool Sand*	Cool Stone*	Gray	Tan	15 Year	20 Year	25 Year		
IB PVC Single-Ply 80 Mil	White*	Gray	Tan	Bronze	ChemGuard*	20 Year	25 Year	30 Year		

*Meets CRRC, Title 24 & EnergyStar Standards

***Refer to Warranty Selection Guide for Warranty Riders, Term Length Limitations, and eligibility requirements of the Warranty Program

Submitted By:

Address:

Email:

Project Name:

Address:

