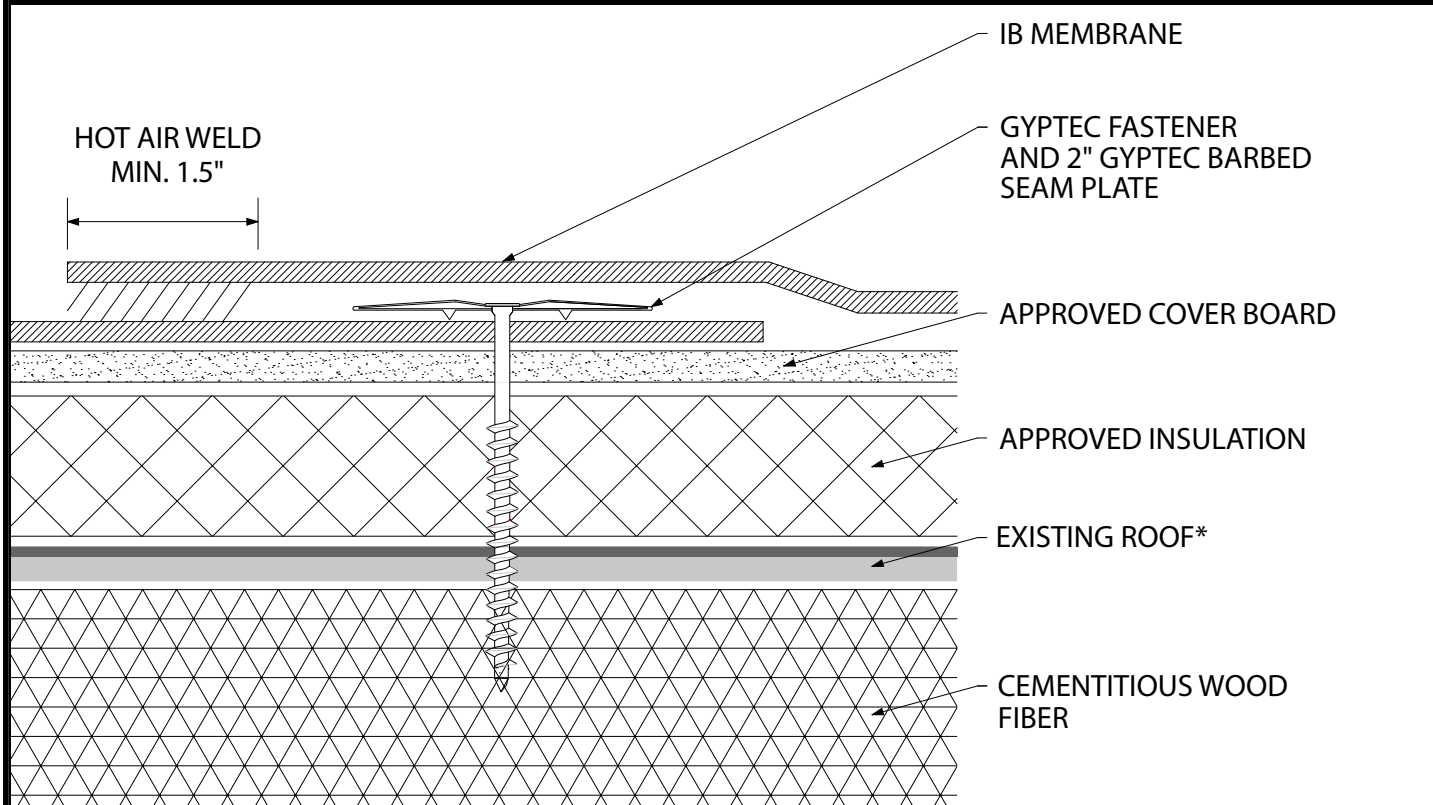


Mechanically Attached Membrane - Cover Board - Insulation - Existing Roof - Cementitious Wood Fiber (Recover)



Fire Rating / Max. Slope	Deck Type	Cover Board/Insulation (over Existing Roof)		IB Membrane		Max. Design Pressure**
		Type	Attachment	Fasteners	Attachment	
'Class "A" Unlimited	Cementitious Wood Fiber	Approved Cover Board & Approved Insulation	GypTec or Deklite, 3" IB GypTec or Deklite Insulation Plate; (6 per 4' x 8')	GypTec or Deklite, IB 2" Barbed Seam Plate	In-Seam 6" o.c. Min. x 67"	Minimum Req. for IB Warranty
'Class "A" Unlimited	Cementitious Wood Fiber	Approved Cover Board & Approved Insulation	GypTec or Deklite, 3" IB GypTec or Deklite Insulation Plate; (6 per 4' x 8')	GypTec or Deklite, IB 2" Barbed Seam Plate	In-Seam 6" o.c. Min. x 31"	Minimum Req. for IB Warranty

Existing Roof: APP or SBS modified bitumen, smooth or granule surfaced asphaltic built-up roof, or single-ply membrane (CPA, CSPE, EPDM, PVC, or TPO)

Approved Cover Board: DensDeck, DensDeck Prime, DensDeck StormX, Securock Ultralight Glass-Mat, Securock Ultralight Coated Glass-Mat, Securock Gypsum Fiber Board, DexCell Glass-Mat Roof Board, or DexCell FA Glass Mat Roof Board, minimum 1/4" thickness; or minimum 1/2" thickness IB HD ISO or H-Shield HD ISO, or minimum 1/2" thickness Structodek HD Primed.

Fire Classification Note: ¹Maintains existing classification with unlimited slope but is limited to existing Class A to retain existing Class 'A' Classification, over insulated or uninsulated cap sheet or smooth surfaced roof when covered with minimum 1/2-in. thickness UL Classified gypsum cover board. ²UL Class A up to 1":12" slope over insulated or non-insulated cap sheet, smooth or gravel surfaced BUR (gravel may be removed) or PVC roof system, covered with minimum 1/4-in. thick DensDeck, DensDeck Prime, Securock Glass-Mat Roof Board, DexCell Glass Mat Roof Board, or DexCell FA Glass Mat Roof Board, or minimum 7/16-in. thick DexCell Cement Board. ³Maintains existing classification limited to 1/2":12" slope and limited to any existing Class A, B, or C roofing system to retain existing Classification, when covered with 1/2-in.thick IB HD ISO or H-Shield HD ISO. ⁴Recover over modified bitumen, or over Single-Ply may not retain UL Classification. ⁵Use of other IB Approved cover boards or lesser thicknesses may not retain UL Classification.

**Refer to Substrate Resistance Table for required pull-out values.

For additional information about IB Roof Systems requirements, recommendations, installation details, approvals, and limitations for the above assemblies, please refer to the latest edition of the IB Roof Systems Specifications Manual. For Technical Services please contact IB Technical Department at 800-426-1626.

Membranes:	Membrane Color:					Warranty Length***			Warranty Type***
IB PVC Single-Ply 50 Mil	White*	Gray	Tan	Bronze	ChemGuard*	10 Year	15 Year	20 Year	Total Systems - No Dollar Limit (TSW)
IB PVC Single-Ply 60 Mil	White*	Cool Sand*	Cool Stone*	Gray	Tan	15 Year	20 Year	25 Year	Warranty Plus (WP)
IB PVC Single-Ply 80 Mil	White*	Gray	Tan	Bronze	ChemGuard*	15 Year	20 Year	25 Year	Commercial Limited Material Warranty (CLMW)
									Residential Limited Material Warranty (RLMW)

*Meets CRRC, Title 24 & EnergyStar Standards

***Refer to Warranty Selection Guide for Warranty Riders, Term Length Limitations, and eligibility requirements of the Warranty Program

Submitted By:

Project Name:

Address:

Address:

Email:

