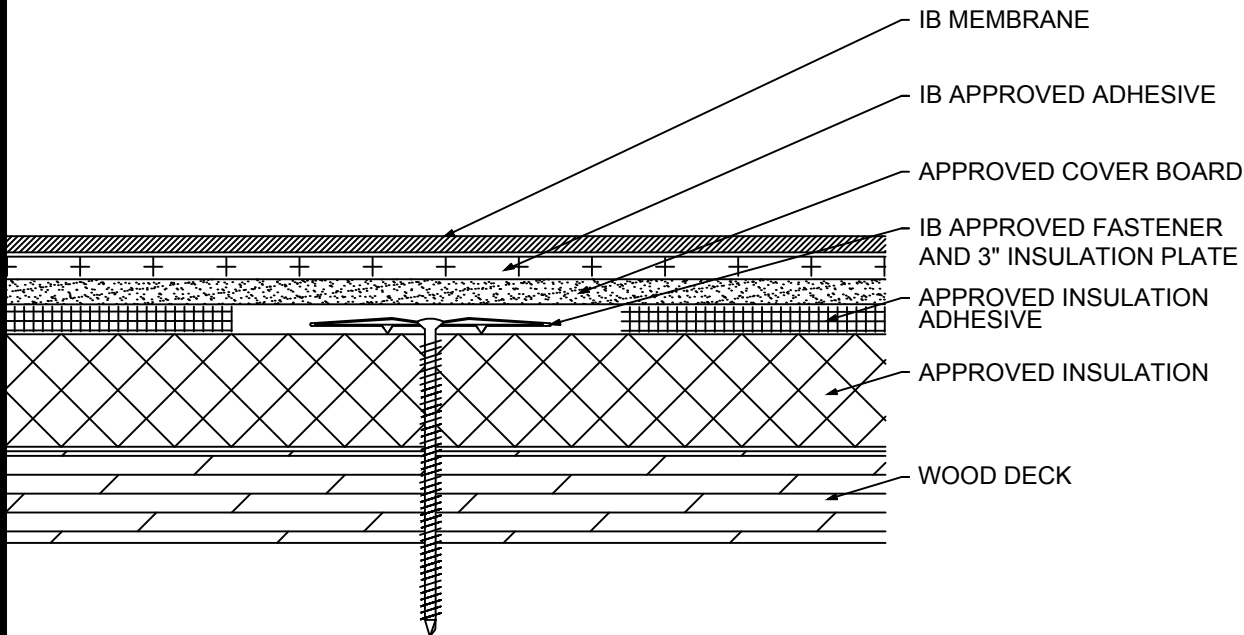


Fully Adhered Membrane - Cover Board (RB) - Insulation (MA) - Wood Deck (New or Tear-Off)



Fire Rating / Max. Slope	Deck Type	Insulation			Cover Board			IB Membrane Attachment	Max. Design Pressure**
		Type	Attachment	Fasteners	Type	Insulation Adhesive	Fasteners		
<input type="checkbox"/> Not Classified	7/16\" OSB	Approved Insulation	16 per 4' x 8' (1 per 2 sq. ft.)	Min. IB SD #12 or HD #14, 3\" IB Insulation Plate	Min. Approved 1/4\" Cover Board	BM, CR20, OB500, OSFA, PG1, or RSIA	Four continuous ribbons, 12\" o.c.	IB Approved Adhesive	Minimum Req. for IB Warranty
<input type="checkbox"/> 1'Class 'A' Unlimited	1/2\" Plywood	Approved Insulation	10 per 4' x 8' (1 per 3.2 sq. ft.)	Min. IB SD #12 or HD #14, 3\" IB Insulation Plate	Min. Approved 1/4\" Cover Board	BM, CR20, OB500, OSFA, PG1, or RSIA	Four continuous ribbons, 12\" o.c.	IB Approved Adhesive	Minimum Req. for IB Warranty
<input type="checkbox"/> 1'Class 'A' Unlimited	1/2\" Plywood	Min. 1.5\" Approved Insulation	20 per 4' x 8' (1 per 1.6 sq. ft.)	Min. IB SD #12 or HD #14, 3\" IB Insulation Plate	Min. Approved 1/4\" Cover Board	BM, CR20, OB500, OSFA, PG1, or RSIA	Four continuous ribbons, 12\" o.c.	IB Approved Adhesive	-45.0 psf (Class 90)
<input type="checkbox"/> 1'Class 'A' Unlimited	19/32\" Plywood	Min. 1.5\" Approved Insulation	24 per 4' x 8' (1 per 1.3 sq. ft.)	Min. IB XHD #15, 3\" IB Insulation Plate	Min. Approved 1/4\" Cover Board	CR20, OB500, OSFA, PG1, or RSIA	Eight continuous ribbons, 12\" o.c.	IB Approved Adhesive	-75.0 psf (Class 150)
<input type="checkbox"/> 1'Class 'A' Unlimited	19/32\" Plywood	Min. 1.5\" Approved Insulation	24 per 4' x 8' (1 per 1.3 sq. ft.)	Min. IB XHD #15, 3\" IB Insulation Plate	Min. 1/4\" Securock Gypsum Fiber Board	BoardMax	Eight continuous ribbons, 12\" o.c.	IB Approved Adhesive	-75.0 psf (Class 150)

Approved Insulation Adhesive: BM = Polyset BoardMax, CR-20 = Polyset CR-20, OB500 = OlyBond 500 Adhesive Fastener, OSFA = Millennium One-Step Foamable Adhesive, PG-1 = Millennium PG-1 Pump Grade Adhesive, or RSIA = IB Rapid Set Insulation Adhesive; maximum bead spacing 12\" o.c.

Approved Insulation: IB EnergyBoard II or III, or IB Approved UL Classified Polyisocyanurate, IB Approved UL Classified Expanded Polystyrene, IB Approved UL Classified Extruded Polystyrene Insulation

Approved Cover Board: DensDeck Prime, DensDeck StormX, Securock Ultralight Coated Glass-Mat, Securock Gypsum Fiber Board, or DexCell FA Glass Mat Roof Board, minimum 1/4\" thickness; or minimum 7/16\" DexCell Cement Board; minimum 1/2\" IB HD ISO or HShield HD ISO; or minimum 1/2\" thick Structodek HD Primed

Fire Classification Note(s): 1'UL Class 'A' with unlimited slope when utilized with any UL Classified insulation and any of the following gypsum cover boards: minimum 1/4\" DensDeck Prime, Securock Ultralight Coated Glass-Mat, or DexCell FA Glass Mat Roof Board, or minimum 7/16\" DexCell Cement Board with all joints staggered 6-in. from the plywood joints, mechanically attached or adhered and membrane adhered using \"IB Vertibond 432 Bonding Adhesive\" at 1-gal/60-ft2 or \"IB Water Borne 636 Adhesive\" at 1-gal/140-ft2. 2'UL Class 'A' up to 4\":12\" when utilized with any UL Classified insulation and minimum 1/2\" Securock Gypsum Fiber Board. 3'UL Class 'A' up to 1/2\":12\" when utilized with minimum 1/2\" H-Shield HD ISO over any UL Classified insulation (except expanded or extruded polystyrene), any combination, may be used below the 1/2 in. minimum thickness. 4'UL Class 'A' up to 1/4\":12\" when utilized with any UL Classified insulation and minimum 1/4\" Securock Gypsum Fiber Board. 5'Use of other IB Approved Insulations and/or IB Approved Cover Boards may not achieve UL Classification.

** Refer to Substrate Resistance table for required pull-out values.

For additional information about IB Roof Systems requirements, recommendations, installation details, approvals and limitations for the above assemblies, please refer to the latest edition of the IB Roof Systems Specifications Manual. For Technical Services please contact us at 800-426-1626.

Membranes:	Membrane Color:	Warranty Length***	Warranty Type***
<input type="checkbox"/> IB PVC Single-Ply 50 Mil	<input type="checkbox"/> White* <input type="checkbox"/> Gray <input type="checkbox"/> Tan <input type="checkbox"/> Bronze <input type="checkbox"/> ChemGuard*	<input type="checkbox"/> 10 Year <input type="checkbox"/> 15 Year <input type="checkbox"/> 20 Year	<input type="checkbox"/> Total System - No Dollar Limit (NDL)
<input type="checkbox"/> IB PVC Single-Ply 60 Mil	<input type="checkbox"/> White* <input type="checkbox"/> Cool Sand* <input type="checkbox"/> Cool Stone* <input type="checkbox"/> Gray <input type="checkbox"/> Tan	<input type="checkbox"/> 15 Year <input type="checkbox"/> 20 Year <input type="checkbox"/> 25 Year	<input type="checkbox"/> Warranty Plus (WP)
<input type="checkbox"/> IB PVC Single-Ply 80 Mil	<input type="checkbox"/> White* <input type="checkbox"/> Gray <input type="checkbox"/> Tan <input type="checkbox"/> Bronze <input type="checkbox"/> ChemGuard*	<input type="checkbox"/> 20 Year <input type="checkbox"/> 25 Year <input type="checkbox"/> 30 Year	<input type="checkbox"/> Commercial Limited Material Warranty (CLMW)
			<input type="checkbox"/> Residential Limited Material Warranty (RLMW)

* Meets CRRC, Title-24, & EnergyStar Standards

*** Refer to Warranty Selection Guide for Warranty Riders, Term Length Limitations, and eligibility requirements of the Warranty Program

Submitted By:	Project Name:
Address:	Address:
Email:	