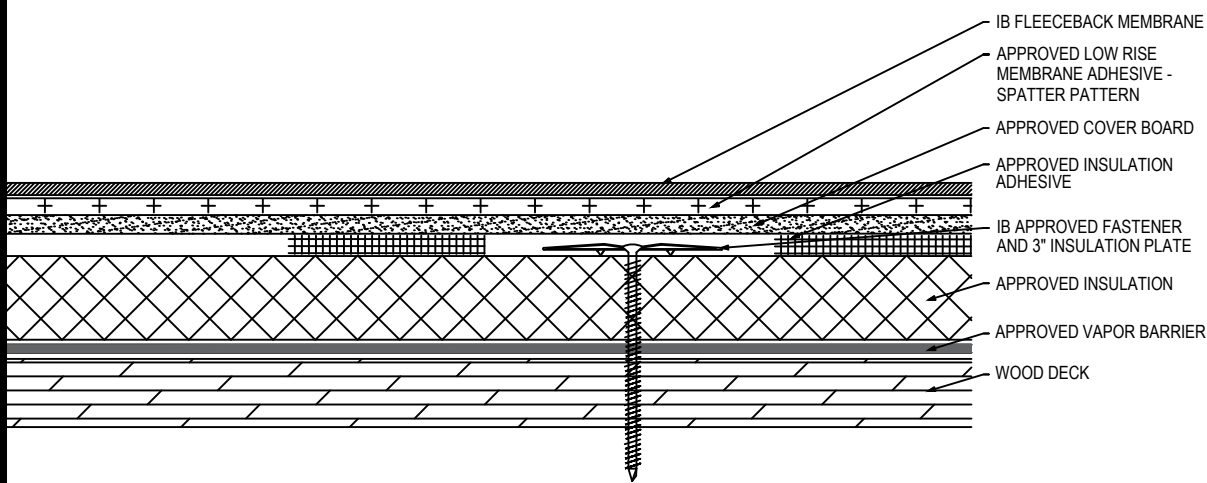


**Fully Adhered Membrane - Cover Board (RB) - Insulation (MA) - Vapor Barrier - Wood Deck (New or Tear-Off)**


Fire Rating / Max. Slope	Deck Type	Insulation			Cover Board			IB Fleeceback Membrane Attachment	Max. Design Pressure**
		Type	Attachment	Fastener	Type	Insulation Adhesive	Fasteners		
<input type="checkbox"/> Not Classified	7/16" OSB	Approved Insulation & Approved Vapor Barrier	16 per 4' x 8' (1 per 2 sq. ft.)	Min. IB SD #12 or HD #14, 3" IB Insulation Plate	Min. Approved 1/4" Cover Board	BM, CR20, OB500, OSFA, PG1, or RSIA	Four continuous ribbons, 12" o.c.	CR-20 Spatter Pattern 3.75 lbs/square	Minimum Req. for IB Warranty
<input type="checkbox"/> 1'Class 'A' Unlimited	1/2" Plywood	Approved Insulation & Approved Vapor Barrier	10 per 4' x 8' (1 per 3.2 sq. ft.)	Min. IB SD #12 or HD #14, 3" IB Insulation Plate	Min. Approved 1/4" Cover Board	BM, CR20, OB500, OSFA, PG1, or RSIA	Four continuous ribbons, 12" o.c.	CR-20 Spatter Pattern 3.75 lbs/square	Minimum Req. for IB Warranty
<input type="checkbox"/> 1'Class 'A' Unlimited	1/2" Plywood	Min. 1.5" Approved Insulation & Approved Vapor Barrier	20 per 4' x 8' (1 per 1.6 sq. ft.)	Min. IB SD #12 or HD #14, 3" IB Insulation Plate	Min. Approved 1/4" Cover Board	BM, CR20, OB500, OSFA, PG1, or RSIA	Four continuous ribbons, 12" o.c.	CR-20 Spatter Pattern 3.75 lbs/square	-45.0 psf (Class 90)
<input type="checkbox"/> 1'Class 'A' Unlimited	19/32" Plywood	Min. 1.5" Approved Insulation & Approved Vapor Barrier	24 per 4' x 8' (1 per 1.3 sq. ft.)	Min. IB XHD #15, 3" IB Insulation Plate	Min. Approved 1/4" Cover Board	CR20, OB500, OSFA, PG1, or RSIA	Eight continuous ribbons, 6" o.c.	CR-20 Spatter Pattern 3.75 lbs/square	-75.0 psf (Class 150)
<input type="checkbox"/> 1'Class 'A' Unlimited	19/32" Plywood	Min. 1.5" Approved Insulation & Approved Vapor Barrier	24 per 4' x 8' (1 per 1.3 sq. ft.)	Min. IB XHD #15, 3" IB Insulation Plate	Min. 1/4" Securock Gypsum Fiber Board	BoardMax	Eight continuous ribbons, 6" o.c.	CR-20 Spatter Pattern 3.75 lbs/square	-75.0 psf (Class 150)

**Approved Vapor Barrier:** IBarrier SA Membrane, SopraVap'r SA, applied using self-adhesive techniques

**Approved Insulation Adhesive:** BM = Polyset BoardMax, CR-20 = Polyset CR-20, OB500 = OlyBond 500 Adhesive Fastener, OSFA = Millennium One-Step Foamable Adhesive; PG-1 = Millennium PG-1 Pump Grade Adhesive; or RSIA = IB Rapid Set Insulation Adhesive; maximum bead spacing 12" o.c. unless otherwise indicated

**Approved Insulation:** IB EnergyBoard II or III, ACFoam II or ACFoam III or IB Approved UL Classified Polyisocyanurate, IB Approved UL Classified Expanded Polystyrene, IB Approved UL Classified Extruded Polystyrene Insulation

**Approved Cover Board:** DensDeck Prime, DensDeck StormX, Securock Ultralight Coated Glass-Mat, Securock Gypsum Fiber Board, or DexCell FA Glass Mat Roof Board, minimum 1/4" thickness; or minimum 7/16" DexCell Cement Board; minimum 1/2" IB HD ISO or HShield HD ISO; or minimum 1/2" thick Structodek HD Primed

**Fire Classification Note(s):** 1'UL Class 'A' with unlimited slope when utilized with any of the following Insulations (IB EnergyBoard II or III, ACFoam II or ACFoam III) and any of the following gypsum cover boards: Minimum 1/4-in. thick DensDeck Prime Roofboard or Securock Coated Glass-Mat Roof Board, or DexCell FA Glass Mat Roof Board, or minimum 7/16-in. thick DexCell Cement Board, adhered with any UL Classified insulation adhesive with all butt joints in the barrier board staggered a minimum of 6-in. from the plywood roof deck butt joints and IB PVC Fleeceback membrane adhered using ICP Adhesives CR-20 at 3.75 lb/100 ft<sup>2</sup>. 2'UL Class 'A' up to 1/2":12" when utilized with any UL Classified insulation (except expanded or extruded polystyrene), any combination, any thickness and covered with minimum 1/2" H-Shield HD ISO and IB PVC Fleeceback membrane adhered using ICP Adhesives CR-20 at 3.75 lb/100 ft<sup>2</sup>. 3The use of other IB Approved Cover Boards and/or other IB Approved membrane adhesives may not achieve UL Classification.

\*\* Refer to Substrate Resistance table for required pull-out values.

**For additional information about IB Roof Systems requirements, recommendations, installation details, approvals and limitations for the above assemblies, please refer to the latest edition of the IB Roof Systems Specifications Manual. For Technical Services please contact us at 800-426-1626.**

Membranes:	Membrane Color:	Warranty Length***	Warranty Type***
<input type="checkbox"/> IB PVC Single-Ply FB 50 Mil	<input type="checkbox"/> White*	<input type="checkbox"/> 10 Year <input type="checkbox"/> 15 Year <input type="checkbox"/> 20 Year	<input type="checkbox"/> Total System - No Dollar Limit (NDL)
<input type="checkbox"/> IB PVC Single-Ply FB 60 Mil	<input type="checkbox"/> White*	<input type="checkbox"/> 15 Year <input type="checkbox"/> 20 Year <input type="checkbox"/> 25 Year	<input type="checkbox"/> Warranty Plus (WP)
<input type="checkbox"/> IB PVC Single-Ply FB 80 Mil	<input type="checkbox"/> White*	<input type="checkbox"/> 20 Year <input type="checkbox"/> 25 Year <input type="checkbox"/> 30 Year	<input type="checkbox"/> Commercial Limited Material Warranty (CLMW)
			<input type="checkbox"/> Residential Limited Material Warranty (RLMW)

\* Meets CRRC, Title-24, & EnergyStar Standards

\*\*\* Refer to Warranty Selection Guide for Warranty Riders, Term Length Limitations, and eligibility requirements of the Warranty Program

<b>Submitted By:</b> Address: Email:	<b>Project Name:</b> Address:
--	----------------------------------