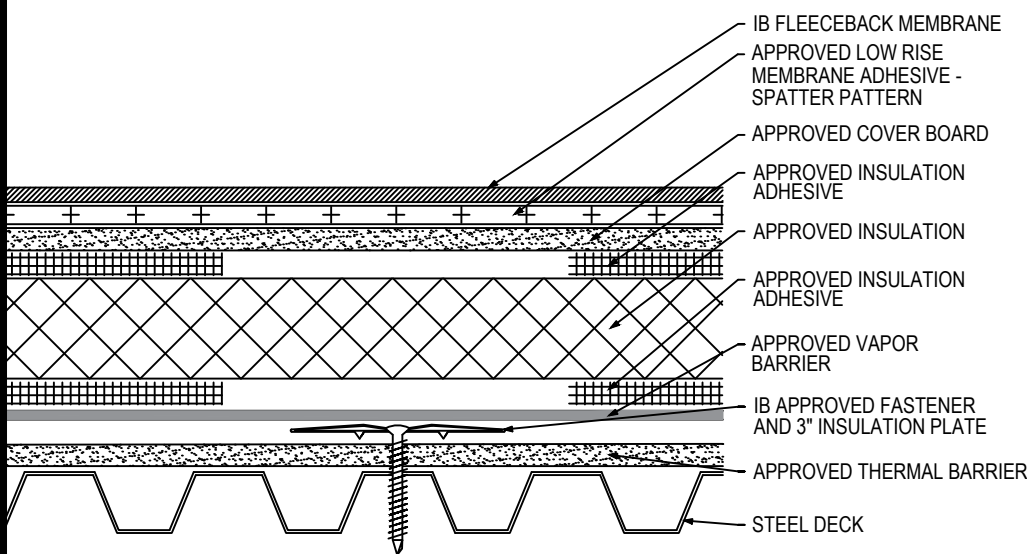





Fully Adhered Membrane (SP) - Cover Board (RB) - Insulation (RB) - Vapor Barrier - Thermal Barrier (MA) - Steel Deck (New or Tear-Off)


Fire Rating / Max. Slope		Deck Type	Thermal Barrier/Vapor Barrier			Insulation/Cover Board			IB Fleeceback Membrane Attachment	Max. Design Pressure**
			Type	Attachment	Fasteners	Type	Insulation Adhesive	Pattern		
	¹ Class "A" Unlimited	Min. 22 ga. Type B, Grade 33 Steel	Min 1/2" Approved Thermal Barrier & Vapor Barrier	8 per 4' x 8' (1 per 4.0 sq. ft.)	Min. IB SD #12 or HD #14, 3" IB Insulation Plate	Approved Insulation & Approved Cover Board	BM, CR20, OB500, OSFA, PG1, or RSIA	Four continuous ribbons, 12" o.c.	CR-20 Spatter Pattern 3.75 lbs/square	Minimum Req. for IB Warranty
	¹ Class "A" Unlimited	Min. 22 ga. Type B, Grade 33 Steel	Min 1/2" Approved Thermal Barrier & Vapor Barrier	8 per 4' x 8' (1 per 4.0 sq. ft.)	Min. IB SD #12 or HD #14, 3" IB Insulation Plate	Approved Insulation & Approved Cover Board	OB500	Four continuous ribbons, 12" o.c.	CR-20 Spatter Pattern 3.75 lbs/square	-45.0 psf (Class 90)
	¹ Class "A" Unlimited	Min. 22 ga. Type B, Grade 33 Steel	Min 1/2" Approved Thermal Barrier & Vapor Barrier	8 per 4' x 8' (1 per 4.0 sq. ft.)	Min. IB SD #12 or HD #14, 3" IB Insulation Plate	Approved Insulation & Approved Cover Board	RSIA	Four continuous ribbons, 12" o.c.	CR-20 Spatter Pattern 3.75 lbs/square	-45.0 psf (Class 90)

Approved Thermal Barrier: DensDeck Prime, Securock Gypsum Fiber Board, minimum $\frac{1}{2}$ " thickness

Approved Vapor Barrier: IBarrier SA Membrane, SopraVap'r SA, applied using self-adhesive techniques

Approved Insulation: IB EnergyBoard II or III, Atlas AC Foam II or III; H-Shield or H-Shield CG

Approved Insulation Adhesive: BM = Polyset BoardMax, CR-20 = Polyset CR-20, OB500 = OlyBond 500 Adhesive Fastener, OSFA = Millennium One-Step Foamable Adhesive; PG-1 = Millennium PG-1 Pump Grade Adhesive; or RSIA = IB Rapid Set Insulation Adhesive; maximum bead spacing 12" o.c. unless otherwise indicated

Approved Cover Board: DensDeck prime, Securock Gypsum Fiber Board minimum $\frac{1}{4}$ " thickness; or minimum $\frac{1}{2}$ " IB HD ISO; $\frac{1}{2}$ " H-Shield HD ISO or minimum $\frac{1}{2}$ " thick Structodek HD Primed.

Fire Classification Note(s): ¹UL Class 'A' up with unlimited slope when utilized with minimum $\frac{1}{4}$ " gypsum cover board listed above. ²UL Class 'A' up to $\frac{1}{4}$ ":12" when utilized with minimum $\frac{1}{4}$ " IB HD ISO ³Use of other IB Approved Insulations and/or IB Approved Cover Boards may not achieve UL Classification.

** Refer to Substrate Resistance table for required pull-out values.

For additional information about IB Roof Systems requirements, recommendations, installation details, approvals and limitations for the above assemblies, please refer to the latest edition of the IB Roof Systems Specifications Manual. For Technical Services please contact us at 800-426-1626.

Membranes:	Membrane Color:	Warranty Length***	Warranty Type***
<input type="checkbox"/> IB PVC Single-Ply FB 50 Mil	<input type="checkbox"/> White*	<input type="checkbox"/> 10 Year <input type="checkbox"/> 15 Year <input type="checkbox"/> 20 Year	<input type="checkbox"/> Total System - No Dollar Limit (NDL)
<input type="checkbox"/> IB PVC Single-Ply FB 60 Mil	<input type="checkbox"/> White*	<input type="checkbox"/> 15 Year <input type="checkbox"/> 20 Year <input type="checkbox"/> 25 Year	<input type="checkbox"/> Warranty Plus (WP)
<input type="checkbox"/> IB PVC Single-Ply FB 80 Mil	<input type="checkbox"/> White*	<input type="checkbox"/> 20 Year <input type="checkbox"/> 25 Year <input type="checkbox"/> 30 Year	<input type="checkbox"/> Commercial Limited Material Warranty (CLMW)
			<input type="checkbox"/> Residential Limited Material Warranty (RLMW)

* Meets CRRC, Title-24, & EnergyStar Standards

*** Refer to Warranty Selection Guide for Warranty Riders, Term Length Limitations, and eligibility requirements of the Warranty Program

Submitted By:

Address:

Email:

Project Name:

Address: