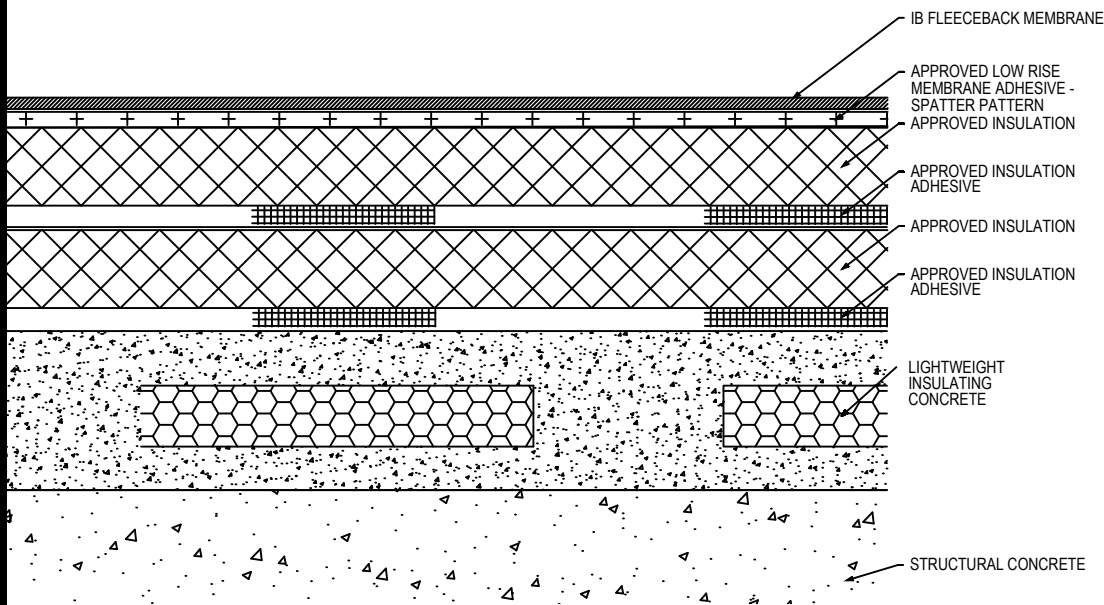


Fully Adhered Membrane (SP) - Insulation (RB) - Insulation (RB) - Lightweight Insulating Concrete (Tear-Off)


Fire Rating / Max. Slope	Deck Type		Insulation			Insulation			IB Fleeceback Membrane Attachment	Max. Design Pressure**
	Sub-Deck	LWIC	Type	Adhesive	Pattern	Type	Insulation Adhesive	Pattern		
<input type="checkbox"/> 1'Class 'A' Unlimited	Structural Concrete	Lightweight Concrete	Approved Insulation	BM, CR20, OB500, OSFA, PG1, or RSIA	Four continuous ribbons, 12" o.c.	Approved Insulation	BM, CR20, OB500, OSFA, PG1, or RSIA	Four continuous ribbons, 12" o.c.	CR-20 Spatter Pattern 3.75 lbs/square	Minimum Req for IB Warranty
<input type="checkbox"/> 1'Class 'A' Unlimited	Structural Concrete	Min 200 psi, 2" thick, Celcore	Min. 1.5" EnergyBoard II or AC Foam II Insulation	CR20	Four continuous ribbons, 12" o.c.	Min. 1.5" EnergyBoard II or AC Foam II Insulation	CR20	Four continuous ribbons, 12" o.c.	CR-20 Spatter Pattern 3.75 lbs/square	-215.0 psf (Class 430)
<input type="checkbox"/> 1'Class 'A' Unlimited	Structural Concrete	Min 200 psi, 2" thick, Elastizell	Min. 1.5" EnergyBoard II or AC Foam II Insulation	CR20	Four continuous ribbons, 12" o.c.	Min. 1.5" EnergyBoard II or AC Foam II Insulation	CR20	Four continuous ribbons, 12" o.c.	CR-20 Spatter Pattern 3.75 lbs/square	-180.0 psf (Class 360)
<input type="checkbox"/> 1'Class 'A' Unlimited	Structural Concrete	Min 200 psi, 2" thick, Elastizell	Min. 1.5" EnergyBoard II or AC Foam II Insulation	OB500	Four continuous ribbons, 12" o.c.	Min. 1.5" EnergyBoard II or AC Foam II Insulation	OB500	Four continuous ribbons, 12" o.c.	CR-20 Spatter Pattern 3.75 lbs/square	-215.0 psf (Class 430)
<input type="checkbox"/> 1'Class 'A' Unlimited	Structural Concrete	Min 200 psi, 2" thick, Mearlcrete	Min. 1.0" EnergyBoard II or III, AC Foam II or III, H-Shield or H-Shield CG Insulation	CR20	Four continuous ribbons, 12" o.c.	Min. 1.0" EnergyBoard II or III, AC Foam II or III, H-Shield or H-Shield CG Insulation	CR20	Four continuous ribbons, 12" o.c.	CR-20 Spatter Pattern 3.75 lbs/square	-215.0 psf (Class 430)

Approved Lightweight Concrete: Celcore = Min. 200 psi, min. 2" thick Celcore Cellular Concrete over Structural Concrete, Elastizell = Min 200 psi, min 2" thick Elastizell Lightweight Insulating Concrete over Structural Concrete, Mearlcrete = Min 200 psi, min. 2" thick Mearlcrete over Structural Concrete.

Approved Insulation: IB EnergyBoard II or III, AC Foam II or AC Foam III, H-Shield or H-Shield CG, or IB Approved UL Classified Polyisocyanurate

Approved Insulation Adhesive: BM = Polyset BoardMax, CR-20 = Polyset CR-20, OB500 = OlyBond 500 Adhesive Fastener, OSFA = Millennium One-Step Foamable Adhesive; PG-1 = Millennium PG-1 Pump Grade Adhesive; or RSIA = IB Rapid Set Insulation Adhesive; maximum bead spacing 12" o.c.

Fire Classification Note(s): ¹UL Class 'A' up with unlimited slope when utilized with any of the following IB Approved ISO insulations: IB Energy Board II, IB Energy Board III, AC Foam II, or AC Foam III, any thickness adhered with any UL Classified insulation adhesive. ²UL Class 'A' up to 1/2":12" when utilized with minimum 1" thickness H-Shield CG. ³UL Class 'C' Classification with an unlimited slope when utilized with minimum 1" thickness H-Shield ISO.

⁴Other IB Approved Insulations or lesser thicknesses may not achieve UL Classification.

**** Refer to Substrate Resistance table for required pull-out values.**

For additional information about IB Roof Systems requirements, recommendations, installation details, approvals and limitations for the above assemblies, please refer to the latest edition of the IB Roof Systems Specifications Manual. For Technical Services please contact us at 800-426-1626.

Membranes:	Membrane Color:	Warranty Length***	Warranty Type***
<input type="checkbox"/> IB PVC Single-Ply FB 50 Mil	<input type="checkbox"/> White*	<input type="checkbox"/> 10 Year <input type="checkbox"/> 15 Year <input type="checkbox"/> 20 Year	<input type="checkbox"/> Total System - No Dollar Limit (NDL)
<input type="checkbox"/> IB PVC Single-Ply FB 60 Mil	<input type="checkbox"/> White*	<input type="checkbox"/> 15 Year <input type="checkbox"/> 20 Year <input type="checkbox"/> 25 Year	<input type="checkbox"/> Warranty Plus (WP)
<input type="checkbox"/> IB PVC Single-Ply FB 80 Mil	<input type="checkbox"/> White*	<input type="checkbox"/> 20 Year <input type="checkbox"/> 25 Year <input type="checkbox"/> 30 Year	<input type="checkbox"/> Commercial Limited Material Warranty (CLMW)
			<input type="checkbox"/> Residential Limited Material Warranty (RLMW)

* Meets CRRC, Title-24, & EnergyStar Standards

*** Refer to Warranty Selection Guide for Warranty Riders, Term Length Limitations, and eligibility requirements of the Warranty Program

Submitted By: Address: Email:	Project Name: Address:
--	----------------------------------