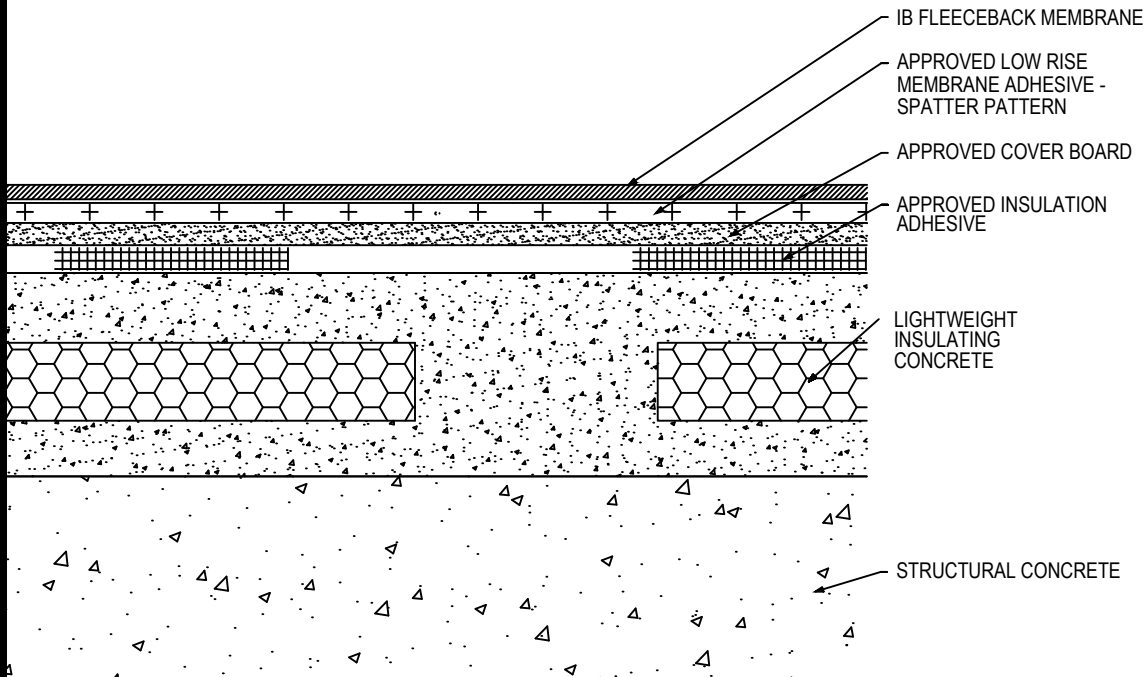


## Fully Adhered Membrane (SP) - Cover Board (RB) - LWIC Deck (Tear-Off)



Fire Rating / Max. Slope		Deck Type		Cover Board			IB Fleeceback Membrane Attachment	Max. Design Pressure**
		Sub-Deck	LWIC	Type	Adhesive	Pattern		
<input type="checkbox"/>	'Class 'A' Unlimited	Structural Concrete	Lightweight Concrete	Approved Insulation	BM, CR20, OB500, OSFA, PG1, or RSIA	Four continuous ribbons, 12" o.c.	CR-20 Spatter Pattern 3.75 lbs/square	Minimum Req. for IB Warranty
<input type="checkbox"/>	'Class 'A' Unlimited	Structural Concrete	Min 200 psi, 2" thick, Celcore	1/4" DensDeck Prime or 1/4" Securock Gypsum Fiber Board	CR20	Four continuous ribbons, 12" o.c.	CR-20 Spatter Pattern 3.75 lbs/square	-222.5 psf (Class 245)
<input type="checkbox"/>	'Class 'A' Unlimited	Structural Concrete	Min 200 psi, 2" thick, Elastizell	1/4" DensDeck Prime or 1/4" Securock Gypsum Fiber Board	CR20	Four continuous ribbons, 12" o.c.	CR-20 Spatter Pattern 3.75 lbs/square	-180.0 psf (Class 360)
<input type="checkbox"/>	'Class 'A' Unlimited	Structural Concrete	Min 200 psi, 2" thick, Elastizell	1/4" DensDeck Prime or 1/4" Securock Gypsum Fiber Board	OB500	Four continuous ribbons, 12" o.c.	CR-20 Spatter Pattern 3.75 lbs/square	-225.0 psf (Class 450)
<input type="checkbox"/>	'Class 'A' Unlimited	Structural Concrete	Min 200 psi, 2" thick, Mearlcrete	1/4" DensDeck Prime or 1/4" Securock Gypsum Fiber Board	CR20	Four continuous ribbons, 12" o.c.	CR-20 Spatter Pattern 3.75 lbs/square	-240.0 psf (Class 480)

**Approved Lightweight Concrete:** Celcore = Min. 200 psi, min. 2" thick Celcore Cellular Concrete over Structural Concrete, Elastizell = Min 200 psi, min 2" thick Elastizell Lightweight Insulating Concrete over Structural Concrete, Mearlcrete = Min 200 psi, min. 2" thick Mearlcrete over Structural Concrete.

**Approved Cover Board:** DensDeck Prime, Securock Coated Glass-Mat Roof Board, Securock Gypsum Fiber Board, or DexCell FA Glass Mat Roof Board minimum 1/4" thickness; or minimum 7/16-in. thick DexCell Cement Board or minimum 1/2" IB HD ISO; or minimum 1/2" thick Structodek HD Primed.

**Approved Insulation Adhesive:** BM = Polyset BoardMax, CR-20 = Polyset CR-20, OB500 = OlyBond 500 Adhesive Fastener, OSFA = Millennium One-Step Foamable Adhesive; PG-1 = Millennium PG-1 Pump Grade Adhesive; or RSIA = IB Rapid Set Insulation Adhesive; maximum bead spacing 12" o.c.

**Fire Classification Note(s):** <sup>1</sup>UL Class 'A' up with unlimited slope when utilized with minimum 1/4-in. thick DensDeck Prime, Securock Coated Glass-Mat Roof Board, or DexCell FA Glass Mat Roof Board, or minimum 7/16-in. thick, DexCell Cement Board, adhered with any UL Classified insulation adhesive <sup>2</sup>UL Class 'A' up to 1":12" when utilized with minimum 1/2" IB HD ISO or H-Shield HD ISO, adhered with any UL Classified insulation adhesive. <sup>3</sup>UL Class 'A' up to 1/2":12" when utilized with minimum 1/4" Securock Gypsum Fiber Board, adhered with any UL Classified insulation adhesive. <sup>4</sup>The use of other IB Approved Cover Boards may not achieve UL classification.

\*\* Refer to Substrate Resistance table for required pull-out values.

For additional information about IB Roof Systems requirements, recommendations, installation details, approvals and limitations for the above assemblies, please refer to the latest edition of the IB Roof Systems Specifications Manual. For Technical Services please contact us at 800-426-1626.

Membranes:	Membrane Color:	Warranty Length***	Warranty Type***
<input type="checkbox"/> IB PVC Single-Ply FB 50 Mil	<input type="checkbox"/> White*	<input type="checkbox"/> 10 Year <input type="checkbox"/> 15 Year <input type="checkbox"/> 20 Year	<input type="checkbox"/> Total System - No Dollar Limit (NDL)
<input type="checkbox"/> IB PVC Single-Ply FB 60 Mil	<input type="checkbox"/> White*	<input type="checkbox"/> 15 Year <input type="checkbox"/> 20 Year <input type="checkbox"/> 25 Year	<input type="checkbox"/> Warranty Plus (WP)
<input type="checkbox"/> IB PVC Single-Ply FB 80 Mil	<input type="checkbox"/> White*	<input type="checkbox"/> 20 Year <input type="checkbox"/> 25 Year <input type="checkbox"/> 30 Year	<input type="checkbox"/> Commercial Limited Material Warranty (CLMW)
			<input type="checkbox"/> Residential Limited Material Warranty (RLMW)

\* Meets CRRC, Title-24, & EnergyStar Standards

\*\*\* Refer to Warranty Selection Guide for Warranty Riders, Term Length Limitations, and eligibility requirements of the Warranty Program

<b>Submitted By:</b> Address: Email:	<b>Project Name:</b> Address:
--	----------------------------------