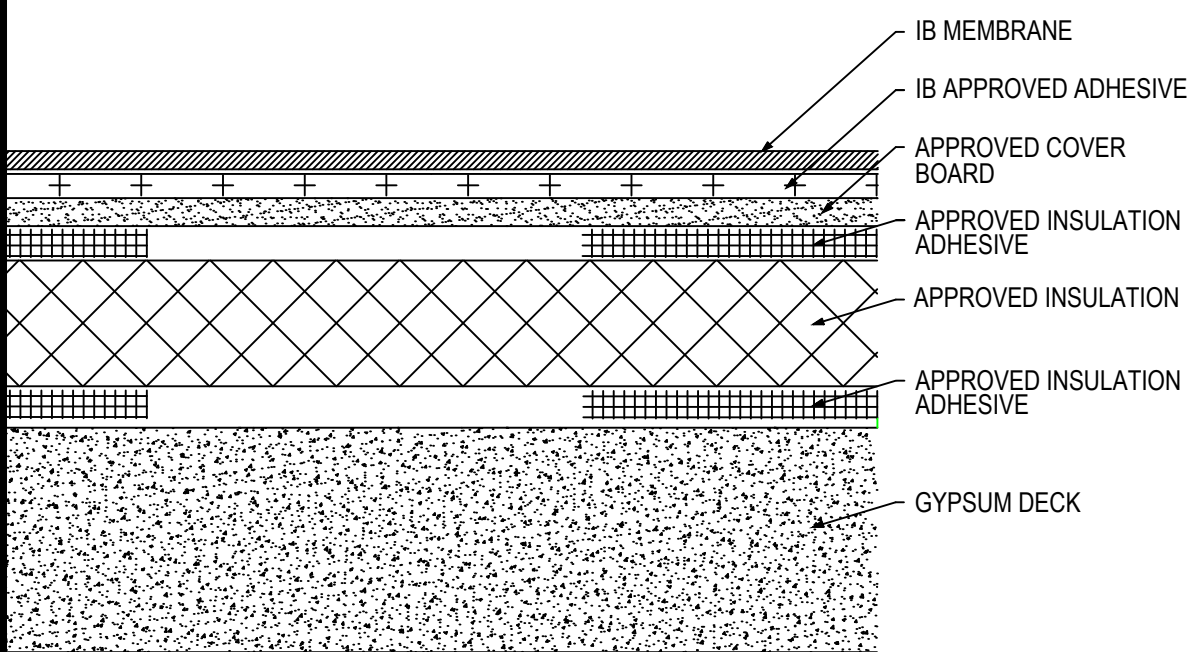


## Fully Adhered Membrane - Cover Board (RB) - Insulation (RB) - Gypsum Deck (Tear-Off)



Fire Rating / Max. Slope	Deck Type	Insulation			Cover Board			IB Membrane Attachment	Max. Design Pressure**
		Type	Adhesive	Fastener	Type	Insulation Adhesive	Pattern		
<input type="checkbox"/> 1'Class 'A' Unlimited	Poured Gypsum	Approved Insulation	BM, CR20, OB500, OSFA, PG1, or RSIA	Four continuous ribbons, 12" o.c.	Approved Cover Board	BM, CR20, OB500, OSFA, PG1, or RSIA	Four continuous ribbons, 12" o.c.	IB Approved Adhesive	Minimum Req for IB Warranty
<input type="checkbox"/> 1'Class 'A' Unlimited	Poured Gypsum	Min. 2" Insulfoam IX EPS Insulation or min. 1.5" IB EnergyBoard II Insulation	OB500	Four continuous ribbons, 12" o.c.	1/4" DensDeck Prime or 1/4" Securock Gypsum Fiber Board	OB500	Four continuous ribbons, 12" o.c.	IB Approved Adhesive	-112.5 psf (Class 225)
<input type="checkbox"/> 1'Class 'A' Unlimited	Poured Gypsum	Min. 1.5" EnergyBoard II or AC Foam II Insulation	OSFA, PG1, or RSIA	Four continuous ribbons, 12" o.c.	1/4" DensDeck Prime or 1/4" Securock Gypsum Fiber Board	OSFA, PG1, or RSIA	Four continuous ribbons, 12" o.c.	IB Approved Adhesive	-202.5 psf (Class 405)
<input type="checkbox"/> 1'Class 'A' Unlimited	Poured Gypsum	Min. 1.0" EnergyBoard II or III, AC Foam II or III, or H-Shield or H-Shield CG Insulation	CR20	Four continuous ribbons, 12" o.c.	1/4" DensDeck Prime or 1/4" Securock Gypsum Fiber Board	CR20	Four continuous ribbons, 12" o.c.	IB Approved Adhesive	-245.0 psf (Class 490)

**Approved Insulation:** Minimum 1-inch thickness - IB EnergyBoard II or III, H-Shield or H-Shield CG; or IB Approved UL Classified Polyisocyanurate, IB Approved UL Classified Expanded Polystyrene, IB Approved UL Classified Extruded Polystyrene Insulation

**Approved Cover Board:** DensDeck Prime, Securock Ultralight Coated Glass-Mat Roof Board, Securock Gypsum Fiber Board, DexCell FA Glass Mat Roof Board, minimum 1/4" thickness; or minimum 7/16-in. thick DexCell Cement Board or minimum 1/2" IB HD ISO; or minimum 1/2" thick StructoDeck HD Primed

**Approved Insulation Adhesive:** BM = Polyset BoardMax, CR-20 = Polyset CR-20, OB500 = OlyBond 500 Adhesive Fastener, OSFA = Millennium One-Step Foamable Adhesive; PG-1 = Millennium PG-1 Pump Grade Adhesive; or RSIA = IB Rapid Set Insulation Adhesive; maximum bead spacing 12" o.c.

**Fire Classification Note(s):** 1'UL Class 'A' up with unlimited slope when utilized with any UL Classified insulation, any thickness and minimum 1/4" DensDeck Prime, Securock Ultralight Coated Glass-Mat Roof Board, or DexCell FA Glass Mat Roof Board, or minimum 7/16-in. thick DexCell Cement Board, adhered and membrane adhered with IB Vertibond 432 Bonding Adhesive at 1-gal/60-ft<sup>2</sup> or IB Water Borne 636 Adhesive at 1-gal/140-ft<sup>2</sup>.

2'UL Class 'A' up to 1/2":12" when utilized with minimum 1/2" IB HD ISO or H-Shield HD ISO 3The use of other IB Approved Cover Boards may not achieve UL classification.

\*\* Refer to Substrate Resistance table for required pull-out values.

**For additional information about IB Roof Systems requirements, recommendations, installation details, approvals and limitations for the above assemblies, please refer to the latest edition of the IB Roof Systems Specifications Manual. For Technical Services please contact us at 800-426-1626.**

Membranes:	Membrane Color:	Warranty Length***	Warranty Type***
<input type="checkbox"/> IB PVC Single-Ply 50 Mil	<input type="checkbox"/> White* <input type="checkbox"/> Gray <input type="checkbox"/> Tan <input type="checkbox"/> Bronze <input type="checkbox"/> ChemGuard*	<input type="checkbox"/> 10 Year <input type="checkbox"/> 15 Year <input type="checkbox"/> 20 Year	<input type="checkbox"/> Total System - No Dollar Limit (NDL)
<input type="checkbox"/> IB PVC Single-Ply 60 Mil	<input type="checkbox"/> White* <input type="checkbox"/> Cool Sand* <input type="checkbox"/> Cool Stone* <input type="checkbox"/> Gray <input type="checkbox"/> Tan	<input type="checkbox"/> 15 Year <input type="checkbox"/> 20 Year <input type="checkbox"/> 25 Year	<input type="checkbox"/> Warranty Plus (WP)
<input type="checkbox"/> IB PVC Single-Ply 80 Mil	<input type="checkbox"/> White* <input type="checkbox"/> Gray <input type="checkbox"/> Tan <input type="checkbox"/> Bronze <input type="checkbox"/> ChemGuard*	<input type="checkbox"/> 20 Year <input type="checkbox"/> 25 Year <input type="checkbox"/> 30 Year	<input type="checkbox"/> Commercial Limited Material Warranty (CLMW)
			<input type="checkbox"/> Residential Limited Material Warranty (RLMW)

\* Meets CRRC, Title-24, & EnergyStar Standards

\*\*\* Refer to Warranty Selection Guide for Warranty Riders, Term Length Limitations, and eligibility requirements of the Warranty Program

**Submitted By:**  
Address:  
Email:

**Project Name:**  
Address: