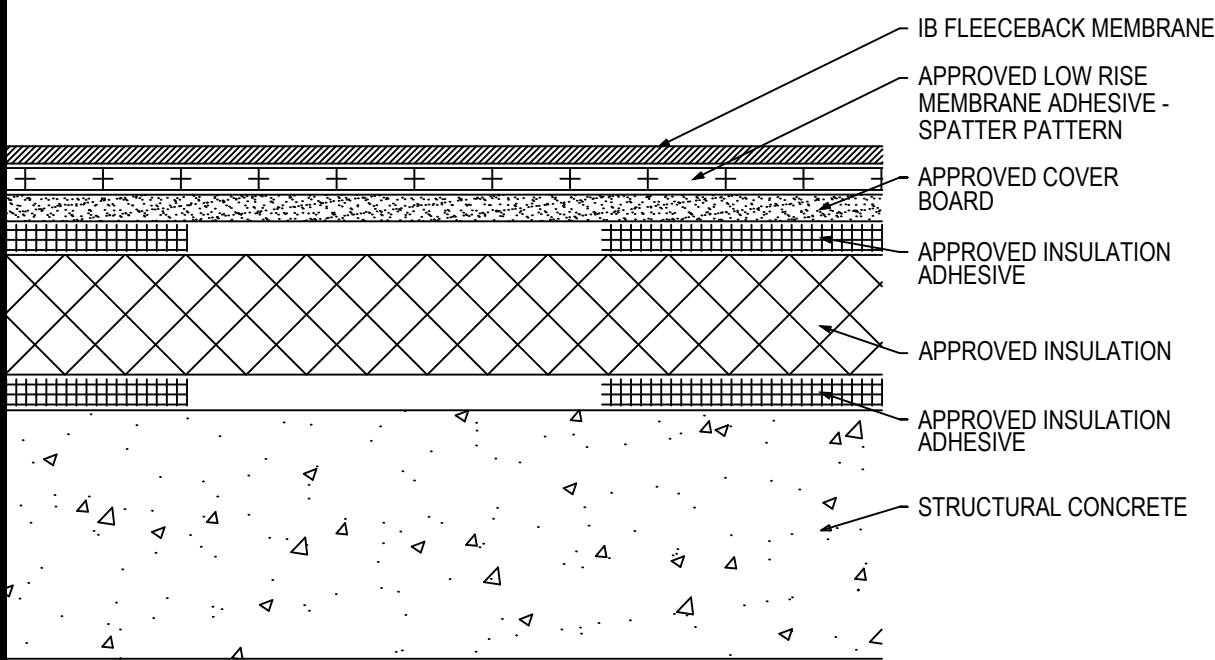


## Fully Adhered Membrane (SP) - Cover Board (RB) - Insulation (RB) - Concrete Deck (New or Tear-Off)



Fire Rating / Max. Slope	Deck Type	Insulation			Cover Board			IB Fleeceback Membrane Attachment	Max. Design Pressure**
		Type	Insulation Adhesive	Pattern	Type	Insulation Adhesive	Pattern		
<input type="checkbox"/> 1Class 'A' Unlimited	Structural Concrete	Min. 1" Approved Insulation	OB500, OSFA, PG1, or RSIA	Four continuous ribbons, 12" o.c.	Min. 1/4" DensDeck Prime	OB500, OSFA, PG1, or RSIA	Four continuous ribbons, 12" o.c.	CR-20 Spatter Pattern 3.75 lbs/square	-257.5 psf (Class 515)
<input type="checkbox"/> 1Class 'A' Unlimited	Structural Concrete	Min. 1" Approved Insulation	OB500, OSFA, PG1, or RSIA	Four continuous ribbons, 12" o.c.	Min. 1/4" Securock Gypsum Fiber Board	OB500, OSFA, PG1, or RSIA	Four continuous ribbons, 12" o.c.	CR-20 Spatter Pattern 3.75 lbs/square	-267.5 psf (Class 535)
<input type="checkbox"/> 1Class 'A' Unlimited	Structural Concrete	Min. 1" Approved Insulation	BM, CR20	Four continuous ribbons, 12" o.c.	Min. 1/4" Securock Gypsum Fiber Board	BM, CR20	Four continuous ribbons, 12" o.c.	CR-20 Spatter Pattern 3.75 lbs/square	-272.5 psf (Class 545)

**Approved Insulation:** IB EnergyBoard II or III, or IB Approved UL Classified Polyisocyanurate, IB Approved UL Classified Expanded Polystyrene, IB Approved UL Classified Extruded Polystyrene Insulation  
**Approved Cover Board:** DensDeck Prime, Securock Coated Glass-Mat Roof Board, Securock Gypsum Fiber Board, or DexCell FA Glass Mat Roof Board minimum 1/4" thickness; or minimum 7/16-in. thick DexCell Cement Board or minimum 1/2" IB HD ISO; or minimum 1/2" thick Structodek HD Primed  
**Approved Insulation Adhesive:** BM = Polyset BoardMax, CR-20 = Polyset CR-20, OB500 = OlyBond 500 Adhesive Fastener, OSFA = Millennium One-Step Foamable Adhesive; PG-1 = Millennium PG-1 Pump Grade Adhesive; or RSIA = IB Rapid Set Insulation Adhesive; maximum bead spacing 12" o.c.  
**Fire Classification Note(s):** 1UL Class 'A' up with unlimited slope when utilized with any of the following IB Approved ISO insulations: IB Energy Board II, IB Energy Board III, ACfoam II, or ACfoam III, any thickness, and minimum 1/4-in. thick DensDeck Prime, Securock Coated Glass-Mat Roof Board, or DexCell FA Glass Mat Roof Board, or minimum 7/16-in. thick DexCell Cement Board, adhered with any UL Classified insulation adhesive.  
2UL Class 'A' up to 1":12" when utilized with any UL Classified insulation (except expanded or extruded polystyrene), any combination, any thickness, and minimum 1/2" IB HD ISO or H-Shield HD ISO, adhered with any UL Classified insulation adhesive.  
3UL Class 'A' up to 1/2":12" when utilized with any UL Classified insulation (except expanded or extruded polystyrene), any combination, any thickness, and minimum 1/4" Securock Gypsum Fiber Board, adhered with any UL Classified insulation adhesive.  
4The use of other IB ISO insulations and/or other IB Approved Cover Boards may not achieve UL classification.  
\*\* Refer to Substrate Resistance table for required pull-out values.

For additional information about IB Roof Systems requirements, recommendations, installation details, approvals and limitations for the above assemblies, please refer to the latest edition of the IB Roof Systems Specifications Manual. For Technical Services please contact us at 800-426-1626.

Membranes:	Membrane Color:	Warranty Length***	Warranty Type***
<input type="checkbox"/> IB PVC Single-Ply FB 50 Mil	<input type="checkbox"/> White*	<input type="checkbox"/> 10 Year <input type="checkbox"/> 15 Year <input type="checkbox"/> 20 Year	<input type="checkbox"/> Total System - No Dollar Limit (NDL)
<input type="checkbox"/> IB PVC Single-Ply FB 60 Mil	<input type="checkbox"/> White*	<input type="checkbox"/> 15 Year <input type="checkbox"/> 20 Year <input type="checkbox"/> 25 Year	<input type="checkbox"/> Warranty Plus (WP)
<input type="checkbox"/> IB PVC Single-Ply FB 80 Mil	<input type="checkbox"/> White*	<input type="checkbox"/> 20 Year <input type="checkbox"/> 25 Year <input type="checkbox"/> 30 Year	<input type="checkbox"/> Commercial Limited Material Warranty (CLMW)
			<input type="checkbox"/> Residential Limited Material Warranty (RLMW)

\* Meets CRRC, Title-24, & EnergyStar Standards

\*\*\* Refer to Warranty Selection Guide for Warranty Riders, Term Length Limitations, and eligibility requirements of the Warranty Program

Submitted By:  
Address:  
Email:

Project Name:  
Address:

