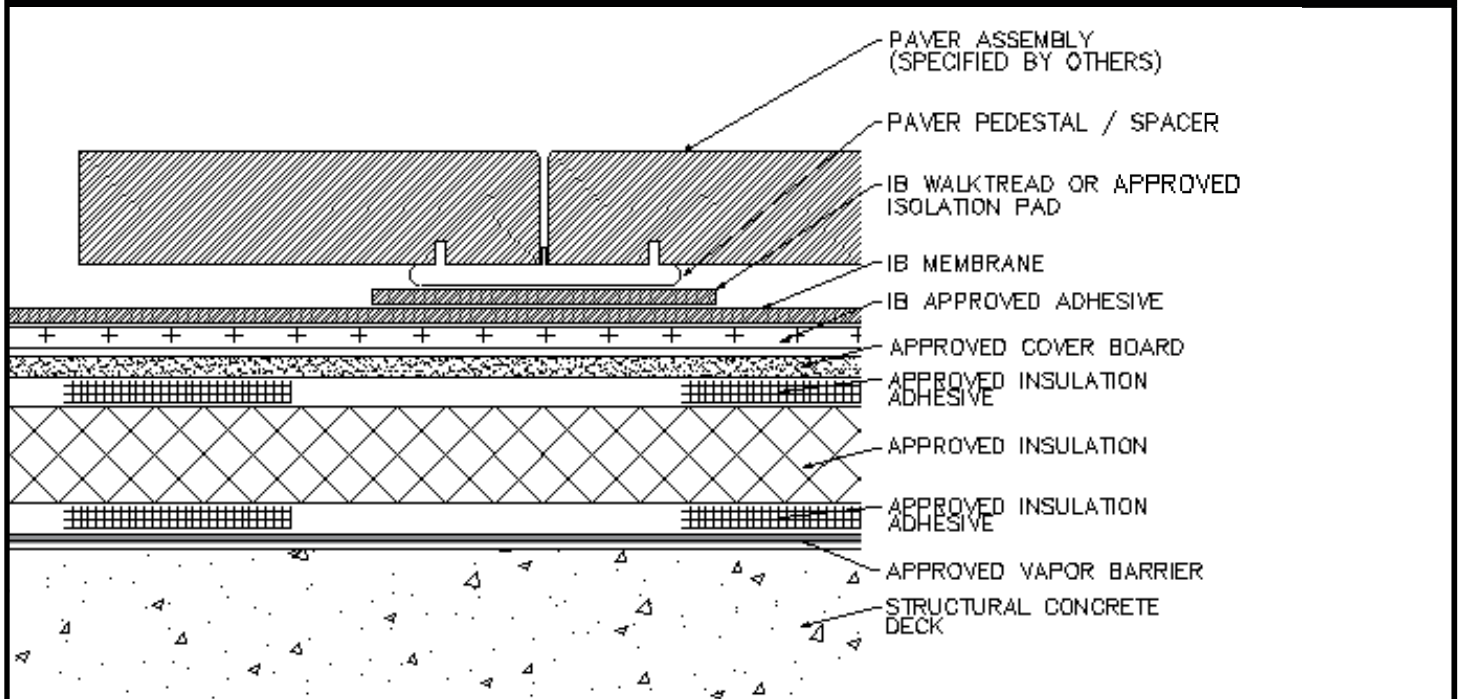




Paver Ballasted - Fully Adhered Membrane - Cover Board (RB) - Insulation (RB) - Vapor Barrier - Concrete Deck (New or Tear Off)



Fire Rating / Max. Slope	Deck Type	Cover Board/Insulation (over Vapor Barrier)			IB Membrane Attachment	Surfacing	Max. Design Pressure**
		Type	Insulation Adhesive	Pattern			
Class "A" 2":12"	Structural Concrete	Approved Insulation & Min. 1/2" Cover Board	BM, CR20, OB500, OSFA, PG1, or RSIA	Four continuous ribbons, 12" o.c.	IB Approved Adhesive	Approved Paver Assembly (Min. 12 lbs. / sq. ft.)	Refer to ANSI/ SPRI RP-4

Approved Vapor Barrier: IBarrier SA Membrane, SopraVap'r SA, applied using self-adhesive techniques

Approved Insulation: IB EnergyBoard II or III, or IB Approved UL Classified Polyisocyanurate, IB Approved UL Classified Expanded Polystyrene, IB Approved UL Classified Extruded Polystyrene Insulation

Approved Cover Board: DensDeck Prime, DensDeck StormX, Securock Ultralight Coated Glass-Mat, Securock Gypsum Fiber Board, or DexCell FA Glass Mat Roof Board, minimum 1/2" thickness; or minimum 7/16" DexCell Cement Board; minimum 1/2" IB HD ISO or HShield HD ISO

Approved Insulation Adhesive: BM = Polyset BoardMax, CR-20 = Polyset CR-20, OB500 = OlyBond 500 Adhesive Fastener, OSFA = Millennium One-Step Foamable Adhesive; PG-1 = Millennium PG-1 Pump Grade Adhesive; or RSIA = IB Rapid Set Insulation Adhesive; maximum bead spacing 12" o.c.

Fire Classification Note(s): ¹UL Class 'A' with unlimited slope when utilized with any UL Classified insulation and any of the following gypsum cover boards: minimum 1/4" DensDeck Prime, Securock Ultralight Coated Glass-Mat, or DexCell FA Glass Mat Roof Board, or minimum 7/16" DexCell Cement Board with all joints staggered 6-in. from the plywood joints, mechanically attached or adhered and membrane adhered using IB Vertibond 432 Bonding Adhesive at 1-gal/60-ft² or IB Water Borne 636 Adhesive at 1-gal/140-ft². ²UL Class 'A' up to 4":12" when utilized with any UL Classified insulation and minimum 1/2" Securock Gypsum Fiber Board. ³UL Class 'A' up to 1/2":12" when utilized with minimum 1/2" H-Shield HD ISO over any UL Classified insulation (except expanded or extruded polystyrene), any combination, any thickness, may be used below the 1/2 in. minimum thickness. ⁴UL Class 'A' up to 1/4":12" when utilized with any UL Classified insulation and minimum 1/4" Securock Gypsum Fiber Board. ⁵Use of other IB Approved Insulations and/or IB Approved Cover Boards may not achieve UL Classification.

**Refer to Substrate Resistance Table for required pull-out values.

For additional information about IB Roof Systems requirements, recommendations, installation details, approvals, and limitations for the above assemblies, please refer to the latest edition of the IB Roof Systems Specifications Manual. For Technical Services please contact IB Technical Department at 800-426-1626.

Membranes:	Membrane Color:					Warranty Length***		Warranty Type***
IB PVC Single-Ply 50 Mil	White*	Gray	Tan	Bronze	ChemGuard*	10 Year	15 Year	Total Systems - No Dollar Limit (TSW)
IB PVC Single-Ply 60 Mil	White*	Cool Sand*	Cool Stone*	Gray	Tan	15 Year	20 Year	Warranty Plus (WP)
IB PVC Single-Ply 80 Mil	White*	Gray	Tan	Bronze	ChemGuard*	20 Year	25 Year	Commercial Limited Material Warranty (CLMW)
								Residential Limited Material Warranty (RLMW)

*Meets CRRG, Title 24 & EnergyStar Standards

***Refer to Warranty Selection Guide for Warranty Riders, Term Length Limitations, and eligibility requirements of the Warranty Program

Submitted By:

Address:

Email:

Project Name:

Address:

