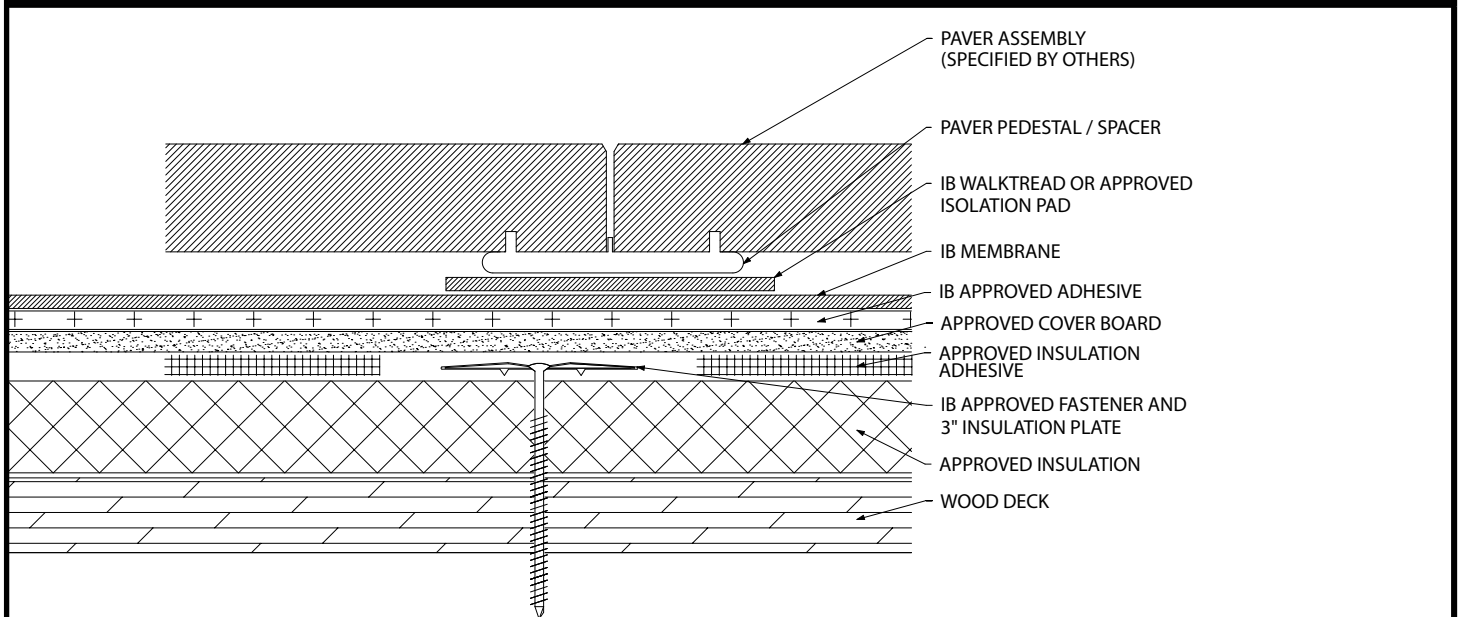


Paver Ballasted - Fully Adhered Membrane - Cover Board (RB) - Insulation (MA) - Wood Deck (New or Tear Off)



| Fire Rating / Max. Slope | Deck Type | Insulation | | Cover Board | | | IB Membrane | Separation Sheet | Surfacing | Max. Design Pressure** |
|-----------------------------|---------------|---------------------------|------------|--------------------------------------|--|--|-------------------------|------------------------------------|---|-----------------------------|
| | | Type | Attachment | Type | Insulation Adhesive | Pattern | | | | |
| 1 Class "A" 2":12" | 5/8" OSB | IB Approved Insulation | Loose Laid | Min Approved 1/2" Cover Board | BM, CR20, OB500, OSFA, PG1, or RSIA | Four con- tinuous ribbons, 12" o.c. | IB Approved Adhesive | IB Approved Separation Sheet | Approved Pav- er Assembly (Min. 12 lbs. / sq. ft.) | Refer to ANSI/ SPRI RP-4 |
| 1 Class "A" 2":12" | 5/8" Plywood | IB Approved Insulation | Loose Laid | Min. Approved 1/2" Cover Board | BM, CR20, OB500, OSFA, PG1, or RSIA | Four con- tinuous ribbons, 12" o.c. | IB Approved Adhesive | IB Approved Separation Sheet | Approved Pav- er Assembly (Min. 12 lbs. / sq. ft.) | Refer to ANSI/ SPRI RP-4 |
| 1 Class "A" 2":12" | 1" Wood Plank | IB Approved Insulation | Loose Laid | Min. Approved 1/2" Cover Board | BM, CR20, OB500, OSFA, PG1, or RSIA | Four con- tinuous ribbons, 12" o.c. | IB Approved Adhesive | IB Approved Separation Sheet | Approved Pav- er Assembly (Min. 12 lbs. / sq. ft.) | Refer to ANSI/ SPRI RP-4 |

Approved Insulation Adhesive: BM = Polyset BoardMax, CR-20 = Polyset CR-20, OB500 = OlyBond 500 Adhesive Fastener, OSFA = Millennium One-Step Foamable Adhesive, PG-1 = Millennium PG-1 Pump Grade Adhesive, or RSIA = IB Rapid Set Insulation Adhesive; maximum bead spacing 12" o.c.

Approved Insulation: IB EnergyBoard II or III, or IB Approved UL Classified Polyisocyanurate, IB Approved UL Classified Expanded Polystyrene, IB Approved UL Classified Extruded Polystyrene Insulation.

Approved Cover Board: DensDeck Prime, DensDeck StormX, Securock Ultralight Coated Glass-Mat, Securock Gypsum Fiber Board, or DexCell FA Glass Mat Roof Board, minimum 1/4" thickness; or minimum 7/16" DexCell Cement Board; minimum 1/2" IB HD ISO or HShield HD ISO.

Fire Classification Note(s): 1UL Class 'A' with unlimited slope when utilized with any UL Classified insulation and any of the following gypsum cover boards: minimum 1/4" DensDeck Prime, Securock Ultralight Coated Glass-Mat, or DexCell FA Glass Mat Roof Board, or minimum 7/16" DexCell Cement Board with all joints staggered 6-in. from the plywood joints, mechanically attached or adhered and membrane adhered using IB Vertibond 432 Bonding Adhesive at 1-gal/60-ft2 or IB Water Borne 636 Adhesive at 1-gal/140-ft2. 2UL Class 'A' up to 4":12" when utilized with any UL Classified insulation and minimum 1/2" Securock Gypsum Fiber Board. 3UL Class 'A' up to 1/2":12" when utilized with minimum 1/2" H-Shield HD ISO over any UL Classified insulation (except expanded or extruded polystyrene), any combination, any thickness, may be used below the 1/2 in. minimum thickness. 4UL Class 'A' up to 1/4":12" when utilized with any UL Classified insulation and minimum 1/4" Securock Gypsum Fiber Board. 5Use of other IB Approved Insulations and/or IB Approved Cover Boards may not achieve UL Classification.

**Refer to Substrate Resistance Table for required pull-out values.

For additional information about IB Roof Systems requirements, recommendations, installation details, approvals, and limitations for the above assemblies, please refer to the latest edition of the IB Roof Systems Specifications Manual. For Technical Services please contact IB Technical Department at 800-426-1626.

| Membranes: | Membrane Color: | | | | | Warranty Length*** | | Warranty Type*** |
|--------------------------|-----------------|------------|-------------|--------|------------|--------------------|---------|--|
| IB PVC Single-Ply 50 Mil | White* | Gray | Tan | Bronze | ChemGuard* | 10 Year | 15 Year | Total Systems - No Dollar Limit (TSW) |
| IB PVC Single-Ply 60 Mil | White* | Cool Sand* | Cool Stone* | Gray | Tan | 15 Year | 20 Year | Warranty Plus (WP) |
| IB PVC Single-Ply 80 Mil | White* | Gray | Tan | Bronze | ChemGuard* | 20 Year | 25 Year | Commercial Limited Material Warranty (CLMW) |
| | | | | | | | | Residential Limited Material Warranty (RLMW) |

*Meets CRRG, Title 24 & EnergyStar Standards

***Refer to Warranty Selection Guide for Warranty Riders, Term Length Limitations, and eligibility requirements of the Warranty Program

Submitted By:

Project Name:

Address:

Address:

Email: