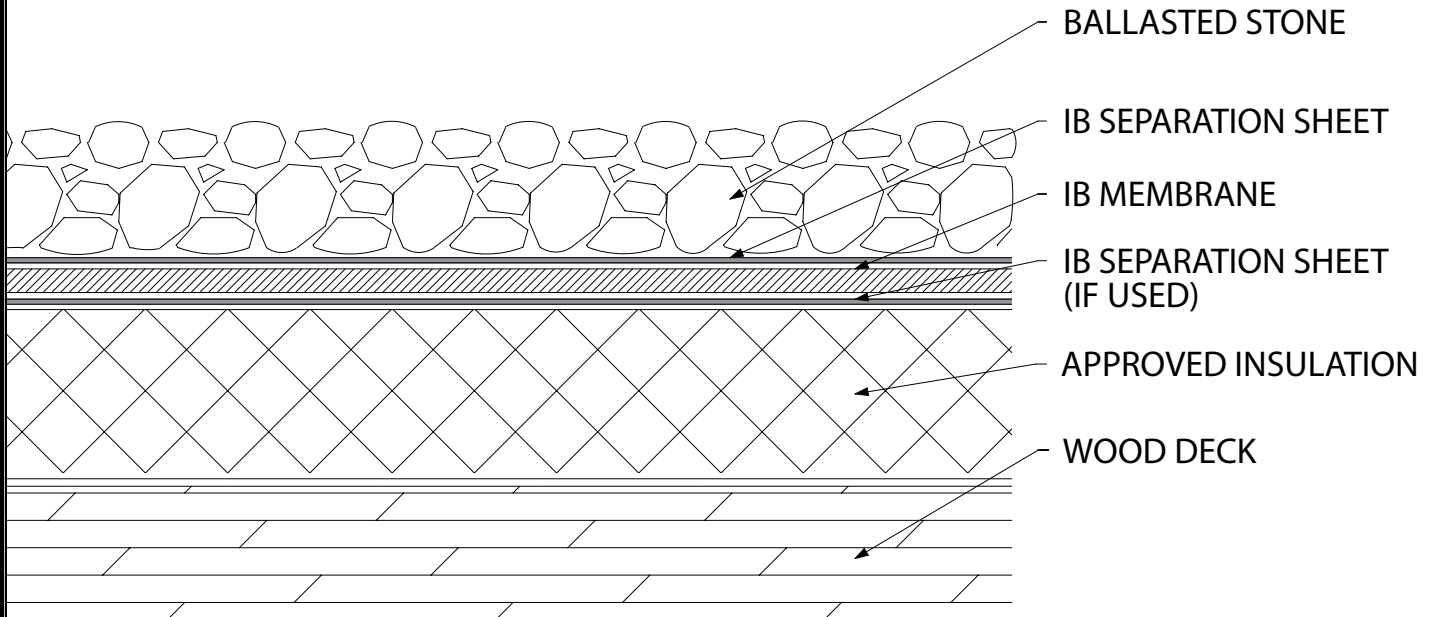


Stone Ballasted Membrane - Insulation (LL) - Wood Deck (New or Tear Off)



Fire Rating / Max. Slope	Deck Type	Insulation		IB Membrane	Separation Sheet	Surfacing	Max. Design Pressure**
		Type	Attachment				
'Class 'A' 2":12	5/8" OSB	IB Approved Insulation	Loose Laid	Loose Laid 60 or 80 Mil	IB Approved Separation Sheet	#4 Stone Ballast 10 lbs. / sq. ft.	Refer to ANSI/ SPRI RP-4
'Class 'A' 2":12	5/8" Plywood	IB Approved Insulation	Loose Laid	Loose Laid 60 or 80 Mil	IB Approved Separation Sheet	#4 Stone Ballast 10 lbs. / sq. ft.	Refer to ANSI/ SPRI RP-4
'Class 'A' 2":12	1" Wood Plank	IB Approved Insulation	Loose Laid	Loose Laid 60 or 80 Mil	IB Approved Separation Sheet	#4 Stone Ballast 10 lbs. / sq. ft.	Refer to ANSI/ SPRI RP-4

Approved Insulation: IB EnergyBoard II or III, or IB Approved UL Classified Polyisocyanurate, IB Approved UL Classified Expanded Polystyrene, IB Approved UL Classified Extruded Polystyrene Insulation

Fire Classification Note: 1UL Class 'A' up to 2":12" when utilized with any thickness, UL Classified insulation, covered with IB membrane and stone ballast at 10 lbs ft2.

20Other IB Approved Insulations or lesser rates of ballast may not achieve UL Classification.

**Refer to Substrate Resistance Table for required pull-out values.

For additional information about IB Roof Systems requirements, recommendations, installation details, approvals, and limitations for the above assemblies, please refer to the latest edition of the IB Roof Systems Specifications Manual. For Technical Services please contact IB Technical Department at 800-426-1626.

Membranes:	Membrane Color:					Warranty Length***		Warranty Type***
IB PVC Single-Ply 60 Mil	White*	Cool Sand*	Cool Stone*	Gray	Tan	15 Year	20 Year	Total Systems - No Dollar Limit (TSW) Warranty Plus (WP)
IB PVC Single-Ply 80 Mil	White*	Gray	Tan	Bronze	ChemGuard*	20 Year	25 Year	Commercial Limited Material Warranty (CLMW) Residential Limited Material Warranty (RLMW)

*Meets CRRC, Title 24 & EnergyStar Standards

***Refer to Warranty Selection Guide for Warranty Riders, Term Length Limitations, and eligibility requirements of the Warranty Program

Submitted By:

Address:

Email:

Project Name:

Address:

