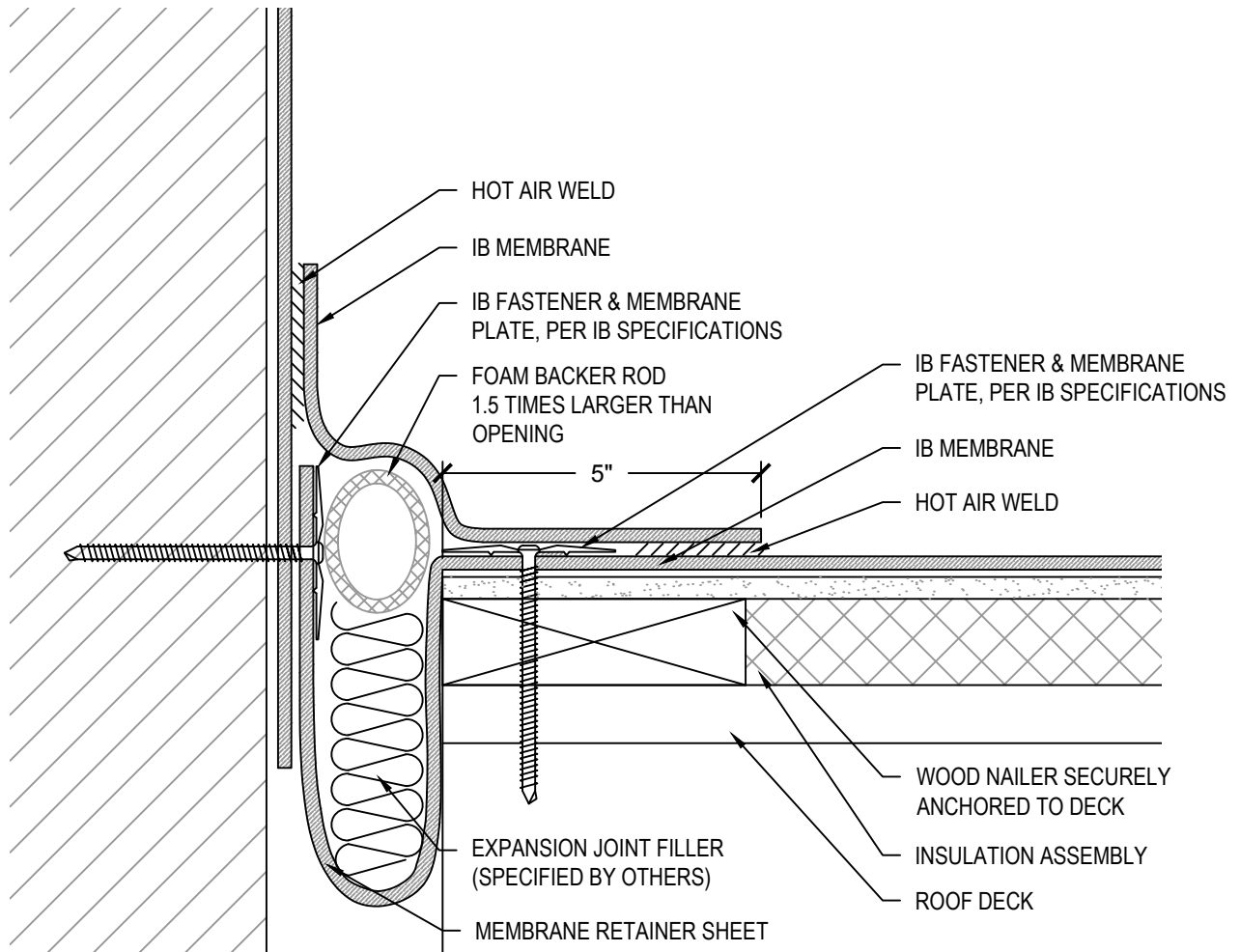


## Expansion Joints & Dividers



### NOTES:

#### APPROVED SUBSTRATE / SEPARATION:

NEW CONSTRUCTION - FULLY ADHERED AND MECHANICALLY ATTACHED

- 1/2" PLYWOOD, 7/16" OSB, 1/2" APPROVED GYPSUM COVER BOARD, POURED / PRECAST CONCRETE, OR CEMENT BLOCK / MASONRY WALLS

MECHANICALLY ATTACHED RECOVER OVER APPROVED EXISTING WALL AND BASE FLASHINGS

- FULL SEPARATION REQUIRED WITH MINIMUM 1/2" PLYWOOD, 1/4" APPROVED GYPSUM COVER BOARD, 7/16" OSB, OR APPROVED IB SEPARATION SHEET

FULLY ADHERED RECOVER OVER APPROVED EXISTING WALL AND BASE FLASHINGS

- FULL SEPARATION REQUIRED WITH MINIMUM 1/2" PLYWOOD, 1/4" APPROVED GYPSUM COVER BOARD, OR 7/16" OSB

<b>Scale:</b> NTS	<b>Detail Name:</b> <i>Roof to Wall Expansion Joint</i>	<b>Detail Number:</b> <i>XD - 04</i>
<b>Submitted By:</b> Address: Telephone:		<b>Project:</b> Address: