



Q3 2022 Product Guide



Quality Products



Exceptional Service



Technical Expertise



More for the Contractor

Enclosed you will find IB products and details you need in order to place orders and get what you need. We are constantly updating the information and have digital versions available online at www.IBroofGear.com, in the literature section. If you need any additional information, contact your local sales representative or call us at 800.426.1626.

ORDERING PROCEDURES AND DETAILS

For current pricing refer to the current IB price list available from your local IB Representative. **This book will be published quarterly; however, orders will be priced accordingly at the time of shipment. This is due to market volatility and our ability to react in due course.**

TO ORDER

Phone Orders:

Call - 800.426.1626

Between 7:00am and 7:00pm CST

Email to Orders.NW@IBroof.com, Orders.SW@IBroof.com

Orders.CT@IBroof.com or Orders.ET@IBroof.com

Fax to 888.741.1160. – Call to confirm fax received

ORDER CUT-OFF TIMES

3:00pm (local time) - LTL stock orders less than 300 squares

12:00pm (local time) Hot Shot/Dedicated truck

(Orders larger than 300 squares ship from IB's Illinois distribution center)

Note: Please allow 24-48 hours for all custom flashing and metals.

ORDER PROCESSING

- Please allow 24 to 72hr for processing order
- Shipment delivery of order is 7-10 days
- If ordering ISO please prepare for extended delivery times

ORDER CHANGES

No order changes within 24 hours – In an effort to reduce errors and create an effective workflow for our teams, we are no longer accepting order changes within 24 hrs. of the order shipping. This means an order shipping Wednesday can be changed on Monday at the latest. After the cut off a new order will need to be processed.

QUOTES

Please contact your local IB representative to obtain quotes for special order items not listed on the price list.

Order Confirmation

After you have placed your order with us an email order confirmation will be sent. Please check this carefully to ensure that we have entered the correct items, quantities, shipping location etc. For will call orders you will receive a confirmation once the order is input. Our shipping department will confirm once the order is ready for pick-up and the inside team will reach out to the rep or customer.

Shipping Confirmation

Once your order has shipped, a shipping confirmation will be sent. The confirmation will contain shipping and tracking information.

We make every effort to ship your order complete. If an item you have ordered is unavailable, an IB Customer Service Representative will contact you to discuss your options. Please note that insulation/coverboard and customs may not ship with membrane and other items.

Receiving Your Order

It is very important that you inspect your shipment upon delivery and note any damages on the bill of lading before the driver leaves.

*Shortages & Damages: Providing images of damaged material upon receipt of delivery will help expedite the claims process.

*Concealed Shortages & Damages: IB Roof Systems allows up to 30 days, after receipt of delivery, to receive notice of any concealed damages or shortages if a credit is being requested.

2022 FREIGHT POLICY

Fulfillment Expectation

IB Roof Systems has been ambitious to build a network where your order can ship the same day or next from the regional IB distribution center closest to you or your project. IB has multiple shipping options that include truckload orders to small package.

Expectations of Customer freight charges

(Prices range by delivery distance and weight)

- Small Parcel (UPS) – charged at cost
- LTL (IB's Carrier) charges are broken down by weight range
 - Under 200 lbs. \$250 Flat
 - 200 – 4,000 lbs. \$0.35/LB
 - 4,000 + lbs. \$0.20/LB
 - LTL Shipments are subject to a flat \$50 freight/fuel surcharge
- LTL (Customer Specific Carrier)
 - Quote & charge
- Accessorial: LTL Shipments requiring additional equipment or services are subject to the added fees below
 - Overlength (Pieces over 8'): \$250
 - Redeliver Fee *case by case
 - Storage Fee *case by case
 - Multiple stop fee \$100 pick-up/drop-off location

* LTL 10:30 AM Guarantee is limited and not available in all locations. This Guarantee cannot be combined with a request for a lift gate and or a pallet jack.

- Deficit freight Empty Truck \$1250, 3/4 truck \$937, 1/2 deficit \$625, 1/4 full \$312

Orders that Qualify for Free Freight

IB will pay the most economical freight method utilizing LTL, Hot Shots and Dry Van (enclosed semi-trailer, etc.) for any order in Continental United States with either of the following:

Note specific truck (Flatbed, Dry Van, Hot Shot) & additional equipment requirements may incur additional freight costs if not most economical

- 300 squares or above
- 4 Pallets of Membrane (full rolls or half rolls) in 1 color membrane from 1 location
- 4 Pallets of Coatings
- Combination of Membrane and Coating to equal 4 Pallets
- Accessories do not qualify for Pallet count
- Freight and Fuel Surcharge of \$400 on every dedicated truck

Please note there will be a \$50 pallet surcharge for additional pallets required to break orders into separate orders less than pallet quantities.

For Orders larger than 400 squares, IB may require 48 hours and will be shipped from our centralized distribution hub in Chicago direct to you or your job site.

For questions regarding our freight policy please contact IB Roof Systems at 800-426-1626 Ext. 2320 or email robbyn.white@ibroof.com

TABLE OF CONTENTS

Membranes

IB PVC Single-Ply 50.....	6
IB PVC Single-Ply 60.....	6
IB PVC Single-Ply 80.....	6
IB PVC Single-Ply ChemGuard™ 50.....	6
IB PVC Single-Ply ChemGuard™ 80.....	7
IB PVC Single-Ply Fleece Back 50.....	7
IB PVC Single-Ply Fleece Back 60.....	7
IB PVC Single-Ply Fleece Back 80.....	7
IB DeckShield.....	8
IB Walk Tread.....	8
CrossGrip.....	8

Insulation / Coverboard / Separation

IB Energy Board II.....	9
IB Energy Board II Tapered.....	9
IB Energy Board III.....	9
IB Energy Board III Tapered.....	9
FanFold Roof Underlayment.....	9
DensDeck Roof Board.....	10
DensDeck Prime Roof Board.....	10
Securock Glass-Mat Roof Board.....	10
Securock Gypsum-Fiber Roof Board.....	10
ACFoam-HD CoverBoard.....	10
IB Separator Sheet.....	11
IB Poly Separator Sheet.....	11
IB HD Poly Separator Sheet.....	11
Sopravap'r.....	11
IB Fire Sheet 10.....	11
EPS Insulation.....	11

Plates & Fasteners

2" Barbed Seam Plates.....	12
2 3/8" Barbed Seam Plates.....	12
2" Gyptec Insulation Plates.....	12
3" Insulation Plates.....	12
3" Gyptec Insulation Plates.....	12
Isoweld Plates.....	12
AccuSeam Plates.....	12
AccuTrac Plates.....	12
RhinoBond Plates.....	12
IB SD #12 Insulation Fastener.....	13
IB HD #14 Roofing Fastener.....	13
IB XHD #15 Roofing Fastener.....	13
#12 Purlin Fastener.....	13
Dekspike Roofing Fastener.....	14
Banding Clamps.....	14

Plates & Fasteners

Gyptec Roofing Fastener.....	14
Band-It-Clips.....	14
Zinc Nail-ins.....	14
ZAC Anchors.....	14
Band-It-Strap.....	14
Band-It Tension Tool.....	14

Adhesives

IB Water Borne Adhesive.....	15
IB Vertibond Adhesive.....	15
Solar Seal 900 Caulking.....	15
1-Part Pourable Penetration Sealant.....	15
IB Water Stop.....	15
M-1 Sealant.....	15
Millennium Universal Primer.....	16
IB Rapid Set Insulation Adhesive.....	16
Millennium PG-1.....	16
Olybond 500 SpotShot.....	16
Elastocol Stick.....	16
Elastocol Stick Zero.....	16
CR-20.....	17
Polyset Board-Max.....	17
Roof Seal.....	17
Polyset® PVC Spray Contact Adhesive.....	17

Flashings & Vents

Short A Cone.....	18
Split Short A Cone.....	18
A Cone.....	18
B Cone.....	18
C Cone.....	19
D Cone.....	19
E Cone.....	19
0 to 5 Cone - 4".....	19
0 to 5 Cone - 6".....	20
0 to 5 Cone - 8".....	20
Oval 0 to 5 Cone - 4".....	20
Non-Reinforced Detail Flashing Roll.....	20
Round T-Joint Patch.....	21
Inside Corner.....	21
IB Pitch Pan.....	21
Outside Corner.....	21
Universal Outside Corner.....	22
IB Cover Strip.....	22
Flexible Metal Profile.....	22
Foil Tape.....	22
IB Non-Reinforced 5" x 8"	
Metal Joint Patch.....	22

TABLE OF CONTENTS

Flashings & Vents

U-Anchor 1400.....	23
U-Anchor 2000.....	23
U-Anchor 2400.....	23
U-Anchor 3400.....	24
U-Anchor 4400.....	24
E-Curb Kits - 6" Round.....	25
E-Curb Kits - Universal.....	25
E-Curb Kits - 4" Round.....	25
IB Recover Membrane Vent.....	25
IB 10" Roof Vent.....	25
IB Dryer Vent / Exhaust Vent & Vent No-Cone.....	26

Drains

2" IB Retrofit Drain & Target.....	27
3" IB Retrofit Drain & Target.....	27
4" IB Retrofit Drain & Target.....	27
5" IB Retrofit Drain & Target.....	27
6" IB Retrofit Drain & Target.....	28
2" IB Retrofit Overflow Drain & Target.....	28
3" IB Retrofit Overflow Drain & Target.....	28
4" IB Retrofit Overflow Drain & Target.....	28
5" IB Retrofit Overflow Drain & Target.....	29
6" IB Retrofit Overflow Drain & Target.....	29
2" IB Drain Liner & Drop Scupper.....	30
3" IB Drain Liner & Drop Scupper.....	30
4" IB Drain Liner & Drop Scupper.....	30

Metals

IB Clad Drip Edge Metal.....	31
IB Clad Drip Edge Stainless Steel Metal.....	31
IB Clad Gravel Stop Metal.....	31
IB Clad Gravel Stop Stainless Steel Metal.....	31
IB Metal Cleat.....	31
IB Stainless Steel Cleat.....	31
IB Aluminum Termination Bar.....	31
IB Clad Termination Bar.....	32
IB Snap Fascia.....	32
AnchorTite® Drip Edge.....	32
IB PVC Clad Metal 4 x 10 Sheet.....	32

Customs

Post Flashing 0-30" (small).....	33
Post Flashing 31-42" (medium).....	33
Post Flashing 43-50" (large).....	33
Post Flashing 51"+ (extra large).....	33

Custom IB Pitch Pan 0-12" (small).....	33
Custom IB Pitch Pan 13-16" (medium).....	33
Custom IB Pitch Pan 17-20" (large).....	33
Custom IB Pitch Pan 21-24" (xlarge).....	33
Custom IB Pitch Pan 25-28" (xxlarge).....	33
Custom IB Pitch Pan 29-32" (MG-small).....	33
Custom IB Pitch Pan 33-36" (MG-medium).....	33
Custom IB Pitch Pan 37-40" (MG-large).....	33
Custom IB Pitch Pan 41-44" (MG-xlarge).....	33

Custom Cone Flashings 0-15" (small).....	34
Custom Cone Flashings 16-22" (medium).....	34
Custom Cone Flashings 23-26" (large).....	34
Custom Cone Flashings 27-29" (xlarge).....	34
Custom Cone Flashings 30-32" (xxlarge).....	34
Custom Cone Flashings 33-36" (MG-small).....	34
Custom Cone Flashings 37-39" (MG-medium).....	34
Custom Cone Flashings 40-44" (MG-large).....	34
Custom Cone Flashings 45-47" (MG-xlarge)....	34

Custom Overflow Scupper 0-20" (small).....	34
Custom Overflow Scupper 21-25" (medium)...	34
Custom Overflow Scupper 26-30" (large).....	34
Custom Overflow Scupper 31-35" (xlarge).....	34
Custom Overflow Scupper 36-40" (xxlarge)....	34
Custom Overflow Scupper 46-50" (MG-small).....	34
Custom Overflow Scupper 41-45" (MG-medium).....	34
Custom Overflow Scupper 51-55" (MG-large).....	34
Custom Overflow Scupper 56-60" (MG-xlarge).....	34

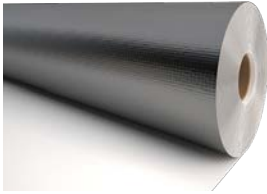
Custom Through Wall Scupper 0-20" (small).....	35
Custom Through Wall Scupper 21-25" (medium).....	35
Custom Through Wall Scupper 26-30" (large).....	35
Custom Through Wall Scupper 31-35" (xlarge).....	35
Custom Through Wall Scupper 36-40" (xxlarge).....	35
Custom Through Wall Scupper 41-45" (MG-small).....	35
Custom Through Wall Scupper 46-50" (MG-medium).....	35

TABLE OF CONTENTS

Custom Through Wall Scupper 51-55" (MG-large).....	35	IB Bleed Block SS.....	38
Custom Through Wall Scupper 56-60" (MG-xlarge).....	35	IB TP Primer.....	38
Custom 2 Sided Through Wall Scupper w/Clad Drop 0-20" (small).....	35	IB Rust Primer.....	38
Custom 2 Sided Through Wall Scupper w/Clad Drop 21-25" (medium).....	35	IB Sealer.....	39
Custom 2 Sided Through Wall Scupper w/Clad Drop 26-30" (large).....	35	IB Concrete Sealer.....	39
Custom 2 Sided Through Wall Scupper w/Clad Drop 31-35" (xlarge).....	35	IB Skylight Glaze.....	39
Custom 2 Sided Through Wall Scupper w/Clad Drop 36-40" (xxlarge).....	35	IB Acrylic FG.....	39
Custom 2 Sided Through Wall Scupper w/Clad Drop 41-45" (MG-small).....	35	IB EPDM Cleaner.....	40
Custom 2 Sided Through Wall Scupper w/Clad Drop 46-50" (MG-medium).....	35	IB Roof Cleaner Concentrate.....	40
Custom 2 Sided Through Wall Scupper w/Clad Drop 51-55" (MG-large).....	35	IB Fabric.....	40
Custom 2 Sided Through Wall Scupper w/Clad Drop 56-60" (MG-xlarge).....	35		
Custom Drain Liner 0-12" (small).....	36	Tools	
Custom Drain Liner 13-14" (medium).....	36	Isoweld® Tool with 6 Magnets.....	41
Custom Drain Liner 15-16" (large).....	36	Leister 120V Uniroof AT w/Case.....	41
Custom Drain Liner 17-18" (xlarge).....	36	Leister 230V Uniroof AT w/Case.....	41
Custom PVC Clad Metal.....	36	Isoweld® Backpack Took with 6 Magnets.....	41
Custom PVC Clad Stainless Metal.....	36	Leister V2 Varimat Auto Welder w/Case.....	41
Custom PVC Clad Metal Color.....	36	Winco 12K Generator.....	41
Custom Cleat Metal.....	36	Leister 110v Hand Welder ST.....	42
Custom Cleat Stainless Metal.....	36	Leister Hand Welder Nozzle 40mm.....	42
Custom Clad Metal Drop Scrubber Round 0-4" small.....	36	Leister Hand Welder Nozzle 20mm.....	42
Custom Clad Metal Drop Scrubber Round 5-7" medium.....	36	Leister 220V Varimat Cord.....	42
Custom Clad Metal Drop Scrubber Round 8-10" large.....	36	IB Hand Welder Kit.....	42
		Hand Welder Element 120V 1600W-S.....	42
		Hand Welder Element 120V 1550W-ST.....	42
		IB Battery Powered Millennium Applicator.....	43
		IB Manual Millennium Heavy Duty Applicator.....	43
		Spray Gun Vertical Wall 9501 w/tip.....	43
		Field Spray gun with 18" extender wand.....	43
		Reusable rubber hoses with valve.....	43
		Brass Spray Tip 9501.....	43
		PS1 Polysolv 11.5 oz Aerosol Cleaner.....	43
		IB Hand Welder Bag Only.....	44
		Membrane Slitter.....	44
		Seam Probe.....	44
		2" Silcon Hand Roller.....	44
		Membrane Shears.....	44
		IB Retrofit Drain Screwdriver.....	44
		IB Bag of Rags.....	44
		Install Video info.....	45
		Sample Info.....	45
		Order Contact Info.....	46
		Return Policy.....	47
Coatings			
IB Acrylic HT.....	37		
IB Acrylic Pro.....	37		
IB Silicone.....	37		
IB Bleed Block.....	38		

MEMBRANES

IB PVC Single-Ply 50



Polyester scrim reinforced, compounded PVC resin based sheet with plasticizers, stabilizers, fillers, pigments and other proprietary materials. An anti-wicking scrim is applied for added strength, tear resistance and enhanced moisture resistance.

Product No	Roll Size	Color
1-50W	50 Mil 6'	White
1-505W	50 Mil 3'	White
1-50G	50 Mil 6'	Gray
1-505G	50 Mil 3'	Gray
1-50T	50 Mil 6'	Tan
1-505T	50 Mil 3'	Tan

Packaging:

Size	Sq Ft	Weight (lbs)	Pallet
6' x 90'	540	175 per roll	15
3' x 90'	270	88 per roll	30

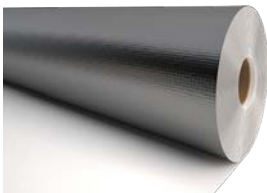
Features:

- 24 mil top ply weathering film
- Helps reduce heat transfer through roof into the building's interior

Colors:



IB PVC Single-Ply 80



Polyester scrim reinforced, compounded PVC resin based sheet with plasticizers, stabilizers, fillers, pigments and other proprietary materials. An anti-wicking scrim is applied for added strength, tear resistance and enhanced moisture resistance.

Product No	Roll Size	Color
1-80W60	80 Mil 6'	White
1-805W60	80 Mil 3'	White
1-80G60	80 Mil 6'	Gray
1-805G60	80 Mil 3'	Gray
1-80T60	80 Mil 6'	Tan
1-805T60	80 Mil 3'	Tan
1-80BNZ60	80 Mil 6'	Bronze
1-805BNZ60	80 Mil 3'	Bronze

Packaging:

Size	Sq Ft	Weight (lbs)	Pallet
6' x 60'	360	191 per roll	15
3' x 60'	180	96 per roll	30

Features:

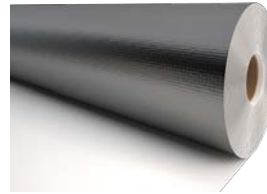
- 38 mil top ply weathering film
- Helps reduce heat transfer through roof into the building's interior

*Ships from Oregon/Illinois Distribution

Colors:



IB PVC Single-Ply 60



Polyester scrim reinforced, compounded PVC resin based sheet with plasticizers, stabilizers, fillers, pigments and other proprietary materials. An anti-wicking scrim is applied for added strength, tear resistance and enhanced moisture resistance.

Product No	Roll Size	Color
1-60W	60 Mil 6'	White
1-605W	60 Mil 3'	White
1-60G	60 Mil 6'	Gray
1-605G	60 Mil 3'	Gray
1-60T	60 Mil 6'	Tan
1-605T	60 Mil 3'	Tan
1-60BNZ	60 Mil 6'	Bronze
1-605BNZ	60 Mil 3'	Bronze
1-60S	60 Mil 6'	Cool Sand*
1-605S	60 Mil 3'	Cool Sand*
1-60STO	60 Mil 6'	Cool Stone*
1-605STO	60 Mil 3'	Cool Stone*

Packaging:

Size	Sq Ft	Weight (lbs)	Pallet
6' x 90'	540	217 per roll	12
3' x 90'	270	109 per roll	24

Features:

- 28 mil top ply weathering film
- Helps reduce heat transfer through roof into the building's interior

*Ships from Nevada/Texas Distribution

Colors:



IB PVC Single-Ply ChemGuard™ 80



Polyester scrim reinforced, compounded PVC resin based sheet with DuPont® Elvaloy® KEE, plasticizers, stabilizers, fillers, pigments and other proprietary materials. An anti-wicking scrim is applied for added strength, tear resistance and enhanced moisture resistance.

Product No	Roll Size	Color
1-80CGW60	80 Mil CG 6'	White
1-805CGW60	80 Mil CG 3'	White

*MOQ 300 sq

Packaging:

Size	Sq Ft	Weight (lbs)	Pallet
6' x 60'	360	191 per roll	15
3' x 60'	180	96 per roll	30

Features:

- 38 mil top ply weathering film
- Helps reduce heat transfer through roof into the building's interior
- ChemGuard™ is a specially designed chemical resistant CPA membrane for industrial and restaurant applications.

Colors:



SINGLE-PLY MEMBRANES

IB PVC Single-Ply Fleece Back 50



Polyester scrim reinforced, compounded PVC resin based sheet with plasticizers, stabilizers, fillers, pigments and other proprietary materials. An anti-wicking scrim is applied for added strength, tear resistance and enhanced moisture resistance. The underside of the membrane has a tough polyester fleece backing.

Product No	Roll Size	Color
1-50WFB	50 Mil FB 6'	White

Packaging:

Size	Sq Ft	Weight (lbs)	Pallet
6' x 90'	540	192 per roll	10

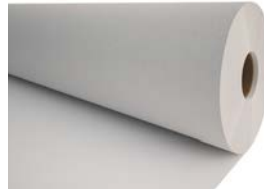
Features:

- 24 mil top ply weathering film
- Helps reduce heat transfer through roof into the building's interior
- Excellent flexibility in all climates

Colors:

White

IB PVC Single-Ply Fleece Back 60



Polyester scrim reinforced, compounded PVC resin based sheet with plasticizers, stabilizers, fillers, pigments and other proprietary materials. An anti-wicking scrim is applied for added strength, tear resistance and enhanced moisture resistance. The underside of the membrane has a tough polyester fleece backing.

Product No	Roll Size	Color
1-60WFB	60 Mil FB 6'	White

Packaging:

Size	Sq Ft	Weight (lbs)	Pallet
6' x 90'	540	234 per roll	10

Features:

- 28 mil top ply weathering film
- Helps reduce heat transfer through roof into the building's interior
- Excellent flexibility in all climates

Colors:

White

IB PVC Single-Ply Fleece Back 80



Polyester scrim reinforced, compounded PVC resin based sheet with plasticizers, stabilizers, fillers, pigments and other proprietary materials. An anti-wicking scrim is applied for added strength, tear resistance and enhanced moisture resistance. The underside of the membrane has a tough polyester fleece backing.

Product No	Roll Size	Color
1-80WFB60	80 Mil FB 6'	White

Packaging:

Size	Sq Ft	Weight (lbs)	Pallet
6' x 60'	360	200 per roll	10

Features:

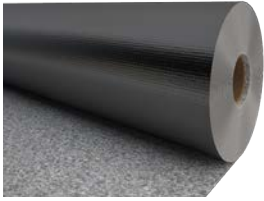
- 38 mil top ply weathering film
- Helps reduce heat transfer through roof into the building's interior
- Excellent flexibility in all climates

Colors:

White

SINGLE-PLY MEMBRANES

IB DeckShield



DeckShield™ was specifically designed for residential exterior walkways, patios, decks, balconies, stairways, around swimming pools, hot tubs, and locker rooms.

Note: Fleece backing

Product No	Roll Size	Color
1-60DSFBCG	60 Mil 6' x 75'	Cedar Grove
1-60DSFBCS	60 Mil 6' x 75'	Cobblestone
1-60DSFBPS	60 Mil 6' x 75'	Pebblestone
1-60DSFBSM	60 Mil 6' x 75'	Silver Maple

By the linear foot pricing is available \$20.00

Packaging:

Size	Sq Ft	Weight (lbs)	Pallet
6' x 75'	450	180 per roll	9

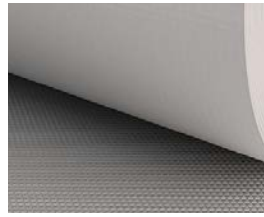
Features:

- Skid-resistant waterproofing
- Available in a roll for easy layout and installation
- Colors are fade resistant
- Suitable for all types of climates

Colors:



IB Walk Tread



80 mil calendared and embossed PVC walk tread with a reinforced scrim backing that can be installed either fully adhered and perimeter welded or loose laid and perimeter welded to an IB PVC Single-Ply Membrane system.

Product No	Roll Size	Color
1-3GWP100	80 Mil 3'	Gray

*light stock all DCs; 8 week lead time for large orders

Packaging:

Size	Sq Ft	Weight (lbs)	Pallet
3' x 60'	180	105 per roll	15

Features:

- Raised pyramid traction surfacing in gray color
- Available in a roll for easy layout and installation
- Heat welds directly to membrane
- Can be fully adhered or loose-laid

Colors:



CrossGrip



Slip resistant walkway system for high traffic roof-top areas. It is ideal for roof and worker protection in high maintenance rooftop areas, where access for installation and maintenance of solar power systems, HVAC, telecommunications, and auxiliary equipment is necessary.

Product No	Roll Size	Color
1-3CROSSGRIPBLK	3' x 33'	Black, Yellow, Gray, White

*Special Order

Packaging:

Size	Sq Ft	Weight (lbs)	Pallet
3' x 33'	99	129 each	48

Features:

- Open grid "duckboard" design with cross directional top ribs
- Durable one-piece welded construction for long life and minimal maintenance
- Excellent slip resistance

*Ships from Nevada Distribution

Colors:



INSULATION / COVERBOARD / SEPARATION

IB Energy Board II



Closed-cell polyisocyanurate foam core integrally bonded to non-asphaltic, fiber-reinforced organic felt facers.

Call for Quote

Product No | Board Size
 3-ISOEB | 4' x 8' & 4' x 4'
 *Special Order

Packaging:
 Size | Thickness | Weight (lbs) | Pallet
 4' x 8' & 4' x 4' | 1" - 4" Various Thicknesses Call for Specs

Features:

- Excellent LTTR to thickness ratio
- Sustainable Building Material
- Reduces cooling and heating loss transmission through roofing assemblies
- Covered component under the IB warranty

IB Energy Board II Tapered



Closed-cell polyisocyanurate foam core integrally bonded to non-asphaltic, fiber-reinforced organic felt facers. Taper offered in a variety of slopes, to achieve positive drainage.

Call for Quote

Product No | Board Size
 3-ISOEBT | 4' x 4'
 *Special Order

Packaging:
 Size | Slope | Thickness | Weight (lbs) | Pallet
 4' x 4' | 1/8", 1/4", 1/2" | 0.5" - 2.5" | Call for Specs

Features:

- Excellent LTTR to thickness ratio
- Sustainable Building Material
- Reduces cooling and heating loss transmission through roofing assemblies
- Covered component under the IB warranty

IB Energy Board III



Closed-cell polyisocyanurate foam core integrally bonded to non-asphaltic, glass coated felt facers. Taper offered in a variety of slopes, to achieve positive drainage.

Call for Quote

Product No | Board Size
 3-ISOE3 | 4' x 8' & 4' x 4'
 *Special Order

Packaging:
 Size | Thickness | Weight (lbs) | Pallet
 4' x 8' & 4' x 4' | 1" - 4" Various Thicknesses Call for Specs

Features:

- Excellent LTTR to thickness ratio
- Sustainable Building Material
- Reduces cooling and heating loss transmission through roofing assemblies
- Covered component under the IB warranty

IB Energy Board III Tapered



Closed-cell polyisocyanurate foam core integrally bonded to non-asphaltic, glass coated felt facers. Taper offered in a variety of slopes, to achieve positive drainage.

Call for Quote

Product No | Board Size
 3-ISOEB3T | 4' x 4'
 *Special Order

Packaging:
 Size | Slope | Thickness | Weight (lbs) | Pallet
 4' x 4' | 1/8", 1/4", 1/2" | 0.5" - 2.5" | Call for Specs

Features:

- Excellent LTTR to thickness ratio
- Sustainable Building Material
- Reduces cooling and heating loss transmission through roofing assemblies
- Covered component under the IB warranty

1/2" FanFold Roof Underlayment



High performance rigid insulation consisting of a closed-cell, lightweight EPS with advanced polymeric laminate facers.

Call for Quote on Large Orders

Product No | Panel Size | Weight (lbs) | Pallet
 3-05FF | 2' x 4' x 50' | 18 per bundle | 1 bundle
 200sf

Features:

- Retains thermal properties
- Lightweight
- High resistance to moisture
- Polymeric laminate facers
- 1.5 lb Density

Packaging:
 Bundles | Thickness | Weight (lbs)
 1/2" x 4' x 50' | 1/2" | Call for Specs

INSULATION / COVERBOARD / SEPARATION

DensDeck Roof Board



Fiber-glass mat facers are mechanically bonded to a high density gypsum core, providing excellent fire resistance and wind uplift properties.

Call for Quote

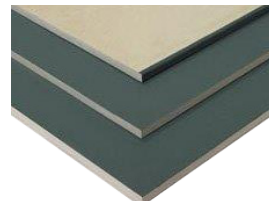
Product No	Board Size
3-DDUP	4' x 8' & 4' x 4'
<i>*Special Order</i>	

Packaging: Size	Thickness	Weight (lbs)
4' x 8' & 4' x 4'	1/4"	1.2
	1/2"	2.0
	5/8"	2.5

Features:

- UL code ratings available
- FM Approved
- Excellent wind uplift ratings
- Resistant to deterioration, warping, and job-site damage

DensDeck Prime Roof Board



The facer is enhanced to allow adhesives to be applied more uniformly and consistently. Creates a stronger and more economical installation by reducing the amounts of adhesive used and potentially eliminate primers.

Call for Quote

Product No	Board Size
3-DDP	4' x 8' & 4' x 4'
<i>*Special Order</i>	

Packaging: Size	Thickness	Weight (lbs)
4' x 8' & 4' x 4'	1/4"	1.2
	1/2"	2.0
	5/8"	2.5

Features:

- UL code ratings available
- FM Approved
- Wind uplift ratings
- Resistant to deterioration, warping, and job-site damage

Securock Glass-Mat Roof Board



This high-performance roof board enhances the durability of the entire roofing system when used as cover board in single-ply mechanically attached systems. Its specifically treated core and high-performance glass-mat facer provide protection against fire, mold and moisture.

Call for Quote

Product No	Board Size
3-SRGM	4' x 8'
<i>*Special Order</i>	

Packaging: Size	Thickness	Weight (lbs)	Pallet
4' x 8'	1/4"	1.2	
4' x 8'	1/2"	2	
4' x 8'	5/8"	2.7	

Features:

- Fire Performance: Meets Factory Mutual (FM) Class 1 and Underwriters Laboratories (UL) Class A fire ratings for unlimited slope in fire barrier applications per UL 790.
- Easier to cut, handle, and install: High-quality mat produces less itchiness than competitive products.
- Moisture and Mold: Fiberglass face and back with treated core provides moisture and mold resistance. Scored a maximum "10" for mold resistance on ASTM D3273.

Securock Gypsum-Fiber Roof Board



This high performance roof board has a unique, fiber-reinforced, homogeneous composition gives the panel strength and water resistance to the core. Achieves high wind uplift ratings with no risk of facer delamination.

Call for Quote

Product No	Board Size
3-SR	4' x 8' & 4' x 4'
<i>*Special Order</i>	

Packaging: Size	Thickness	Weight (lbs)	Pallet
4' x 8' & 4' x 4'	1/4"	1.57	
4' x 8' & 4' x 4'	1/2"	2.76	
4' x 8' & 4' x 4'	5/8"	3.2	

Features:

- Superior wind-uplift performance for a wide variety of roof systems
- Excellent fire performance and surface burning characteristics
- Integral water-resistant core ensures moisture and mold resistance

ACFoam-HD CoverBoard



Closed-cell polyisocyanurate foam core integrally bonded to inorganic ACFoam-III coated glass facer.

Call for Quote

Product No	Board Size
3-05HD	4' x 8' & 4' x 4'
<i>*Special Order</i>	

Features:

- High Performance Coated Glass Facer
- 2.5 Average LTTR
- Factory Mutual rated for severe hail
- Covered Component under the IB Total Systems Warranty

Packaging: Size	Thickness	Weight (lbs)	Pallet
4' x 8' & 4' x 4'	1/2"	0.5 lb/sf	

INSULATION / COVERBOARD / SEPARATION

IB Separator Sheet



High strength, polypropylene scrim reinforced fabric with polypropylene coating on both sides. Used as a separation sheet beneath membranes to resist contaminant, residue transfer and moisture from existing substrates.

Product No	Roll Size
3-01SEP	5' 10" x 515' 3004sf

Packaging: Size	Thickness	Weight (lbs)	Pallet
5' 10" x 515'	Call for Specs	78 per roll	30

Use:

- General duty separation layer between compatible and non-compatible roofing components

IB Poly Separator Sheet



Polyester based woven fiber sheet. Used as a divorcing layer between IB membranes and incompatible or contaminated materials and surfaces. Can also service as a protection layer between overburden items.

Product No	Roll Size
3-045SS36	7' 6" x 360' 2700sf

Packaging: Size	Thickness	Weight (lbs)	Pallet
7' 6" x 360'		85 per roll	12

IB HD Poly Separator Sheet



Heavy duty 16 oz polyester based woven fiber sheet. Used as a divorcing layer between membranes and incompatible or contaminated materials and surfaces. Can also service as a protection layer between overburden items. Ideal cushioning layer for ballasted assemblies over concrete decks.

Product No	Roll Size
3-016SS	7' 6" x 150' 1125sf

Packaging: Size	Thickness	Weight (lbs)	Pallet
7' 6" x 150'		135 per roll	10

IBarrier



Self-adhesive membrane composed of SBS modified bitumen on the bottom surface and a tri-laminated woven polyethylene facer.

Features:

- High resistance to foot traffic
- Self Sealing
- Quick release silicone film

Product No	Roll Size
7-IBarrier	3'9" x 134' 468 sq ft 3" Overlap

Packaging: Size	Thickness	Weight (lbs)	Pallet
3'9" x 134'		77 per roll	25

IB Fire Sheet 10



Constructed using a strong fiber-glass core mat that is coated with a specially formulated acrylic coating that can be installed as the first layer directly over a roof deck.

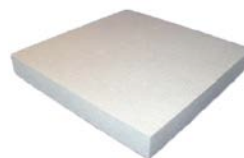
Product No	Roll Size
3-0FR10	4' x 250' 1000sf

Packaging: Size	Thickness	Weight (lbs)	Pallet
4' x 250'		97 per roll	20

Features:

- Approved separation layer between insulations
- Effective barrier between EPS and XEPS insulation and PVC membranes
- Superior thermal barrier value

EPS Insulation



InsulFoam FL (Flute-Fill) is a custom-made, engineered insulation consisting of a superior closed-cell, lightweight expanded polystyrene (EPS). InsulFoam FL is cut from the same high-quality EPS as our fl at InsulFoam roof products and, upon request, will be manufactured to meet or exceed the requirements of ASTM C578

Product No	Roll Size
3-EPSRI – standard flat stock	Custom Size
3-EPSRIT – tapered EPS	Custom Size
*Special Order	

Packaging: Size	Thickness	Weight (lbs)	Pallet
4' x 8' & 4' x 4'	1/4"		

PLATES & FASTENERS

2" Barbed Seam Plates



For use with wood

OD. 2"
ID. .265"/.270"
Thickness: .038"
Finish: AZ 50 Galvalume

Product No	Type	Bucket Qty	Weight (lbs)
6-0900	2" Seam Plate	1000	28 per box

2" Gyptec Insulation Plates



Round Plate for gypsum, lightweight insulating concrete and cementitious wood fiber.

DIA. 2"
Thickness: .032"
Finish: AZ 55 Galvalume

Product No	Type	Bucket Qty	Weight (lbs)
6-2GYPTec	2" Insulation Plate	1000	30 per box

*Special Order

3" Gyptec Insulation Plates



For use with gypsum, lightweight insulating concrete and cementitious wood fiber.

DIA. 3"
Thickness: .017"
Finish: AZ 50 Galvalume

Product No	Type	Bucket Qty	Weight (lbs)
6-3GYPTec	3" Insulation Plate	1000	45 per box

*Special Order

RhinoBond Plates



For both insulation board attachment and for securing PVC Membrane to the plates by induction welding.

Plates are 3-in. (80 mm) round, specially coated Galvalume, for steel, wood or structural concrete roof decks.

Product No	Type	Bucket Qty	Weight (lbs)
6-RBP08A-PVC	3" Insulation Plate	500	36 per box

*Special Order

AccuTrac Plates



Plates are made of Galvalume coated steel, polypropylene and nylon. 3-in. square AccuTrac plates and the proper IB fastener. AccuTrac is an ergonomically correct option that minimizes operator fatigue by eliminating contractor bending and twisting.

Product No	Type	Bucket Qty	Weight (lbs)
6-0911	3" Plate	1000	40 per box

*Special Order

2-3/8" Barbed Seam Plates



For use with wood, light gauge, heavier steel, and concrete.

OD. 2-3/8"
ID. .260"/.262"
Thickness: .038"
Finish: AZ 50 Galvalume

Product No	Type	Bucket Qty	Weight (lbs)
6-0905	2 3/8" Seam Plate	1000	53 per box

3" Insulation Plates



For use with cover boards and insulation over any wood deck steel, and concrete

OD. 3"
ID. .260"
Thickness: .019"
Finish: Galvalume

Product No	Type	Bucket Qty	Weight (lbs)
6-0910	3" Insulation Plate	1000	40 per box

Isoweld Plates



For both insulation board attachment and for securing PVC Membrane to the plates by induction welding.

3.12" OD, .260" ID, G90 Finished Steel with PVC adhesive one side, Purple Tint Color. FM Approved.

Product No	Type	Bucket Qty	Weight (lbs)
6-ISOWELD	3" Plate	500	38 per box

*6 month shelf life

AccuSeam Plates



Plates are made of Galvalume coated steel, polypropylene and nylon. 2-inch plates should be used for lap seam joints.

Product No	Type	Bucket Qty	Weight (lbs)
6-0920	2" Plate	1000	30 per box

*Special Order

PLATES & FASTENERS

IB SD #12 Insulation Fastener



Designed to secure insulation and separation materials to various substrates. Intended to be used with IB 3" insulation plates.

Product No	Type	Bucket Qty	Weight (lbs)
6-0720	1 1/4" Fastener	1000	13
6-0730	2 1/4" Fastener	1000	17
6-0703	3" Fastener	1000	20
6-0704	4" Fastener	1000	26

*Special Order

6-0780	5" Fastener	1000	34
6-0790	6" Fastener	1000	39
6-0800	7" Fastener	1000	45
6-0810	8" Fastener	1000	55

Features:

- Drill point design prevents fastener walking
- 13 threads per inch provides higher pull-out values
- Drill point cuts through gravel and BUR
- E-coat meets FM Approval Standard 4470

IB HD #14 Roofing Fastener



Designed to secure insulation and membrane to various substrates. It is used in conjunction with an IB 3" insulation plate and 2" and 2-3/8" barbed seam plates.

Product No	Type	Bucket Qty	Weight (lbs)
6-HD001.25	1 1/4" Fastener	1000	13
6-HD001.75	1 3/4" Fastener	1000	16
6-HD002	2" Fastener	1000	19
6-HD003	3" Fastener	1000	26
6-HD003.5	3 1/2" Fastener	500*	18
6-HD004	4" Fastener	1000	35
6-HD005	5" Fastener	500	22
6-HD006	6" Fastener	500	26
6-HD007	7" Fastener	500	28
6-HD008	8" Fastener	500	33

*Special Order

6-HD009	9" Fastener	500*	38
6-HD010	10" Fastener	500*	41
6-HD012	12" Fastener	250*	25

*3.5" with square drive head; square bit included in each unit

Features:

- 10 threads per inch for ease of installation in concrete roof decks
- Low profile truss head
- Deep #3 recess provides for ultimate bit engagement
- The Dekfast reduced drill point provides for ultimate pull-out values by producing a minimum opening
- E-coat meets FM Approval Standard 4470

IB XHD #15 Roofing Fastener



Designed to secure insulation and membrane to various substrates. It is used in conjunction with an IB 3" insulation plate and 2" and 2-3/8" barbed seam plates.

Product No	Type	Bucket Qty	Weight (lbs)
6-XHD002	2" Fastener	1000	20
6-XHD003	3" Fastener	1000	29
6-XHD004	4" Fastener	1000	38
6-XHD005	5" Fastener	500	24
6-XHD006	6" Fastener	500	28
6-XHD007	7" Fastener	500	33
6-XHD008	8" Fastener	500	39

*Special Order

6-XHD009	9" Fastener	500*	44
6-XHD010	10" Fastener	500*	49
6-XHD012	12" Fastener	250*	32
6-XHD014	14" Fastener	250*	35
6-XHD016	16" Fastener	250*	38

Features:

- Drill point design prevents fastener walking
- 13 threads per inch provides higher pull-out values
- Drill point cuts through gravel and BUR
- Above average pull out values in 24 & 26 gauge metal
- E-coat meets FM Approval Standard 4470

#12 Purlin Fastener



Designed to secure membrane to structural steel purlins in a metal roof retrofit application. It is used in conjunction with the IB 3" isoweld® plate and 2-3/8" barbed seam plates.

Product No	Type	Bucket Qty	Weight (lbs)
6-PUR334	3 3/4" Fastener	1000	15
6-PUR434	4 3/4" Fastener	1000	37
6-PUR534	5 3/4" Fastener	1000	44
6-PUR634	6 3/4" Fastener	500	26

Features:

- Shank diameter is smaller than that of the drill point and the outside thread diameter
- 24 threads per inch provides greater pull-out values
- Steel thickness: 18 ga (.045" nominal) through 1/4" (.250")
- E-coat
- 3.375" thread length (measured from tip of drill point to end of threads)

PLATES & FASTENERS

Dekspike Roofing Fastener



A mushroom head, hammer-in, non-threaded fastener designed to secure approved insulations, cover boards, IB PVC membranes and flashing materials to structural concrete.

Product No	Type	Box Qty	Weight (lbs)
6-DS002	2" Fastener	500	12
6-DS003	3" Fastener	500	18
6-DS004	4" Fastener	500	23
6-DS005	5" Fastener	500	28
6-DS006	6" Fastener	500	34
6-DS007	7" Fastener	500	39

*Special Order for all sizes

Gypotec Roofing Fastener



Glass-filled nylon auger fastener with a 1" head designed to secure approved IB insulation and membranes to gypsum, lightweight insulating concrete and cementitious wood fiber.

Product No	Type	Box Qty	Weight (lbs)
6-GYPTEC030	3" auger	500	16
6-GYPTEC035	3.5" auger	500	16
6-GYPTEC040	4" auger	500	17
6-GYPTEC045	4.5" auger	500	21
6-GYPTEC050	5" auger	500	23
6-GYPTEC055	5.5" auger	500	27
6-GYPTEC060	6" auger	500	29
6-GYPTEC065	6.5" auger	500	31

*Special Order for all sizes

*Gypotec Plates available in 2" and 3" 6-2GYPTec and 6-3GYPTec

Zinc Nail-ins



A mushroom head, expanding zinc plated steel nail-in anchor used for fastening IB termination bars and metal flashings to concrete and filled masonry walls.

Product No	Type	Box Qty	Weight (lbs)
6-ZNI14112	1/4" x 1-1/2" Nail-in	100	3 per box

ZAC Anchors



The ZAC Anchor Fastener is designed to secure termination bar, counterflashing and various metal flashings to wood, masonry / concrete and steel.

Product No	Type	Box Qty	Weight (lbs)
6-ZAC	1-3/8" ZAC Anchors	1000	2.5 per box

Banding Clamps



IB roller ball stainless clamp has a tensile load of 300 pounds.

Small 1"-8" L X 1/4" W 1/2 Min 5" Max
 Large 4'-3" L X 1/2" W 2 1/2 Min 16" Max

Product No	Type	Bag Qty
4-SSC1	*Small Stainless Steel Clamp	50
4-SSC2	Large Clamps	10

TPA Sleeve



Large domed plate provides secure resistance to wind uplift. Polyamide PA6 material protects against heat loss or gain. Ergonomic tube design for better insertion. Sharp point grooved tip makes insertion easy and provides secure clamping.

*for fastening insulation only

Product No	Type	Package
6-TPA2.75	2.75" Sleeve w/3" insulation plate	1000
6-TPA6.25	6.25" Sleeve w/3" insulation plate	500

Band-It Strap



201 Stainless Steel BAND-IT Band, bright annealed finish sets the standard in banding, clamping and fastening with a combination of high strength and quality appearance.

Width: 3/8 in.
 Average breaking strength: 1875 lbs
 Box - 3/8 in. x 100 ft.
 Weight: 7.00 lbs

Product No	Type
4-SBKIT	Band-It Band

- 201 stainless steel offers good resistance to oxidation and many moderate corrosive agents
- Utilized in general use banding applications
- Can be used with clip style buckles to create band clamps
- Packaged in a standard box

Band-It Tension Tool



The Band-It XE9229 tensions and cuts off up to 12mm wide regardless of material or coating.

Weight: 1.25 lbs.

Product No	Type
8-BTT	Band-It Tension / Cutter

ADHESIVES

IB Water Borne Adhesive 636



Water based adhesive designed specifically for horizontal bonding applications.

Coverage:

Between 500 - 900 square feet / 5 gallon

Product No	Type	Color	Weight	Pallet
7-WB636	Water Borne	White	46	45

Colors:

White



Requires ground shipping/additional shipping

IB Vertibond Adhesive



Synthetic polymer based contact adhesive designed specifically for horizontal and vertical bonding applications.

Coverage:

60 square feet / gallon
300 square feet / 5 gallon

Product No	Type	Color	Pallet
7-CA5	Vertibond	Amber	45

*Limited stock

Packaging:

Size	Weight (lbs)	Pail
300 sqft	45	5 gallon

Colors:

Amber



Requires ground shipping/additional shipping

Solar Seal 900 Caulking



Multi-purpose polymeric-terpolymer, exterior grade caulking which is compatible with any IB Roof System's membranes and bonds to dry, contaminant free surfaces.

Coverage:

15 linear feet / 11 oz tube / 12 tubes in a box

Product No	Type	Color
7-OCW	Solar Seal	White
7-OCB	Solar Seal	Brown
7-OCG	Solar Seal	Gray
7-OCL	Solar Seal	Clear
7-OCBL	Solar Seal	Black
7-OCT	Solar Seal	Tan
7-OCR	Solar Seal	Red
7-OCS	Solar Seal	Cool Sand
7-OCEG	Solar Seal	Green
7-CUST	Solar Seal	Custom

Standard Colors:

White	Cool Sand	Black	Tan	Brown	Red	Green	Gray	Clear
-------	-----------	-------	-----	-------	-----	-------	------	-------



Requires ground shipping/additional shipping

IB Vertibond Adhesive 432



Synthetic polymer based contact adhesive designed specifically for horizontal and vertical bonding applications.

Coverage:

300 square feet / 5 gallon

Product No	Type	Color	Pallet
7-CA432	Vertibond	Amber	45

Packaging:

Size	Weight (lbs)	Pail
300 sqft	36	5 gallon

Colors:

Amber



Requires ground shipping/additional shipping

1-Part Pourable Penetration Sealant



Moisture curing, pourable sealant designed for use in pitch pans. It is solvent-free, contains no isocyanates and will not shrink upon curing.

Product No	Type	Color
7-R520W2L	Penetration Sealant	Amber

Features:

- Solvent free, 100% solids will not shrink
- 20 minute skin cure
- Self leveling
- Can be applied at temperatures as low as 30° F

Colors:

Amber



Requires ground shipping/additional shipping

IB Water Stop



Butyl-based, one-component mastic designed specifically for sealing roofing membrane. It creates a flexible seal for stopping water penetrating into the roofing systems.

Coverage:

15 linear feet / 10.3 oz tube

Product No	Type	Color
7-WS	Water Stop	Gray

Colors:

Gray



Requires ground shipping/additional shipping

ADHESIVES

Millennium Universal Primer



All-purpose water-based primer designed for use with IB Rapid Set Insulation Adhesive, PG-1 insulation and membrane adhesives. A red tint offers you easy recognition of areas of applied primer.

Coverage:
 150-250 sq ft / gallon
 3.5 gallon pail

Product No | Type
7-UP | Universal Primer
**Special Order*

Color
 Red

Features:

- Easy to apply one-part formulation
- Water based, VOC free
- Quick application, applies in one coat

Colors:

Red



Requires ground shipping/additional shipping

Millennium PG-1



Millennium PG-1 Pump Grade Insulation Adhesive is a two component, VOC free, all purpose, low rise, bulk packaged, polyurethane foamable adhesive that contains no solvents and sets in minutes.

Coverage:
 5 gallon (18.9L) Kit: 2,000 - 2,500 sq ft
 (186m2 - 232m2) / Weight 83 lbs

Product No | Type
PG-1 | Surface Coating
**Special Order*

Color
 Amber

Equipment:

- Millennium Cyclone and Cyclone II Pump machines
- Graco E-10 Reactor
- Graco Predator
- Adhesives Systems Technology GMP-075
- Adhesives Systems Technology PCH GMP-500

Colors:

Amber



Requires ground shipping/additional shipping

Olybond 500 SpotShot



Fast-acting, two-component, low-rise polyurethane foam adhesive designed to adhere a variety of board stocks to a variety of roof substrates in both new and re-roof applications.

Coverage:
 400-600 sq ft / case / 18 lbs per case

Product No | Type | Color
7-OB500SS-R | Spot Shot | White
**Special Order*
 30% temporary raw material surcharge

Features:

- Non-penetrating attachment system
- Odor free
- Low VOC
- Reduces construction noise
- Rapid application

Colors:

White



Requires ground shipping/additional shipping

IB Rapid Set Insulation Adhesive



One-step, all-purpose, elastomeric foam adhesive designed to bond approved roof insulation and cover boards to a variety of substrates.

Coverage:
 400-600 sq ft / case

Product No | Type | Color
OS-FA15-04 | Insulation Adhesive | White

Colors:

White



Requires ground shipping/additional shipping

IB Prime



Primer is a fast-drying primer consisting of a proprietary blend of SBS polymer, resins and volatile solvents designed to enhance IBarrier Vapor Retarder adhesion to a variety of approved substrates.

Coverage:
 500-700 sq ft / case / 44 lbs per case

Product No | Type
7-IBPrime | IBarrier
**Special Order*

Color
 Copper

Colors:

Copper



Requires ground shipping/additional shipping

IB Prime LV



Primer is a fast-drying primer consisting of a proprietary blend of SBS polymer, resins and volatile solvents designed to enhance IBarrier Vapor Retarder adhesion to a variety of approved substrates.

Coverage:
 500-700 sq ft / case / 44 lbs per case

Product No | Type
IBPrime-LV | IBarrier
**Special Order*

Color
 Copper

Colors:

Copper



Requires ground shipping/additional shipping

ADHESIVES

CR-20 HFO



Low pressure, two-component, polyurethane foam adhesive designed to adhere a variety of IB approved insulations, cover boards, thermal barriers and fleece back membrane to a variety of roof substrates in both new and re-roof applications.

Packaging: 12 sets per pallet / 88 lbs
 Mini 12 sets per pallet / 35 lbs

Product No	Type	Color	Coverage sq ft
7-ABTSHFO	CR-20	Blue	2,800-3,000

Features:

- Non-penetrating attachment system
- Odor free
- Low VOC
- Reduces construction noise
- Rapid application

Colors:

White



Requires ground shipping/additional shipping

Polyset® PVC Spray Contact Adhesive



Portable, self-containing, single component spray contact adhesive designed specifically to adhere most IB PVC membrane to vertical walls and curb substrates.

Spray gun and hose sold separately in the tools section page 43*

Product No	Type	Color	Coverage sq ft	Weight
7-PVCSPRAY	Spray Contact Adhesive 22L Kit	Blue	1,000 sq. ft net applied coverage (both surfaces)	30lbs

*stocked in IL, TX, and NV

Features:

- High adhesive output
- Fast set up time
- Low VOC (minus exempted compounds)
- Re-useable spray gun and hose (sold separately)
- Reduces labor time

Colors:

Blue



Requires ground shipping/additional shipping

Roof Seal



Polyset® Roof Seal low pressure, two-component spray polyurethane foam (SPF) is specifically designed to provide a temporary seal of the new roofing membrane to the existing roof system.

Packaging: 12 sets per pallet / 27 lbs / 14 lbs

Product No	Type	Color
7-RS780	Sealant	White

*Special Order

Yield: 780 linear feet @ 2" bead



Requires ground shipping/additional shipping

M-1 Sealant



M-1 is a moisture curing, polyether adhesive sealant designed for applications in damp, dry, or cold climates. M-1 is solvent free and contains no isocyanates.

package: 24 per box

Product No	Type	Color
7-M1	M-1 Sealant	Black

Features:

- Easy to apply, no mixing
- Non-penetrating attachment system
- Rapid Application
- Saves Labor

Colors:

Black



Requires ground shipping/additional shipping

FLASHINGS & VENTS

Short A Cone



IB factory fabricated, dielectrically welded reinforced IB PVC Single-Ply base and a non-reinforced IB PVC Single-Ply upper. Designed for easy installation to reduce roof top labor and call backs by reducing workmanship errors.

Product No	Type	Color	Weight (lbs)
4-ASW-R	Short A Cone	White	0.32
4-ASG-R	Short A Cone	Gray	0.32
4-AST-R	Short A Cone	Tan	0.32
4-ASCS-R	Short A Cone	Cool Sand	0.32
4-ASSTO-R	Short A Cone	Cool Stone	0.32
4-ASCGW-R	Short A Cone	ChemGuard	0.32

Pipe Flashing Specifications

Product	Base Flashing	Base	Top	Height	Pipe Size	Box Qty
Short A Cone	14"	3 1/4"	1/4"	5 1/2"	1/4" - 1"	25

Use:

IB Pipe Flashings are typically installed around roof top penetrations such as pipe, conduit, gas lines and other circular profile penetrations and flashings.

Colors:

White	Cool Sand	Cool Stone	Tan	Gray	Chemguard
-------	-----------	------------	-----	------	-----------

A Cone



IB factory fabricated, dielectrically welded reinforced IB PVC Single-Ply base and a non-reinforced IB PVC Single-Ply upper. Designed for easy installation to reduce roof top labor and call backs by reducing workmanship errors.

Product No	Type	Color	Weight (lbs)
4-AW-R	A Cone	White	0.44
4-AG-R	A Cone	Gray	0.44
4-AT-R	A Cone	Tan	0.44
4-AS-R	A Cone	Cool Sand	0.44
4-ASTO-R	A Cone	Cool Stone	0.44
4-ACGW-R	A Cone	ChemGuard	0.44

Pipe Flashing Specifications

Product	Base Flashing	Base	Top	Height	Pipe Size	Box Qty
A Cone	15"	4 1/2"	1"	8 1/2"	1" - 2 3/8"	25

Use:

IB Pipe Flashings are typically installed around roof top penetrations such as pipe, conduit, gas lines and other circular profile penetrations and flashings.

Colors:

White	Cool Sand	Cool Stone	Tan	Gray	Chemguard
-------	-----------	------------	-----	------	-----------

Split Short A Cone



IB factory fabricated, dielectrically welded reinforced IB PVC Single-Ply base and a non-reinforced IB PVC Single-Ply upper. Designed for easy installation to reduce roof top labor and call backs by reducing workmanship errors.

Product No	Type	Color	Weight (lbs)
4-SAWS-R	Split Short A Cone	White	0.32
4-SAGS-R	Split Short A Cone	Gray	0.32
4-SATS-R	Split Short A Cone	Tan	0.32
4-SASS-R	Split Short A Cone	Cool Sand	0.32
4-SASTOS-R	Split Short A Cone	Cool Stone	0.32
4-SACGWS-R	Split Short A Cone	ChemGuard	0.32

Pipe Flashing Specifications

Product	Base Flashing	Base	Top	Height	Pipe Size	Box Qty
Split Short A Cone	14"	3 1/4"	1/4"	5 1/2"	1/4" - 1"	25

Use:

IB Pipe Flashings are typically installed around roof top penetrations such as pipe, conduit, gas lines and other circular profile penetrations and flashings.

Colors:

White	Cool Sand	Cool Stone	Tan	Gray	Chemguard
-------	-----------	------------	-----	------	-----------

B Cone



IB factory fabricated, dielectrically welded reinforced IB PVC Single-Ply base and a non-reinforced IB PVC Single-Ply upper. Designed for easy installation to reduce roof top labor and call backs by reducing workmanship errors.

Product No	Type	Color	Weight (lbs)
4-BW-R	B Cone	White	0.53
4-BG-R	B Cone	Gray	0.53
4-BT-R	B Cone	Tan	0.53
4-BS-R	B Cone	Cool Sand	0.53
4-BSTO-R	B Cone	Cool Stone	0.53
4-BCGW-R	B Cone	ChemGuard	0.53

Pipe Flashing Specifications

Product	Base Flashing	Base	Top	Height	Pipe Size	Box Qty
B Cone	15 1/2"	5 1/4"	2 1/2"	10 1/2"	2 3/8" - 4"	25

Use:

IB Pipe Flashings are typically installed around roof top penetrations such as pipe, conduit, gas lines and other circular profile penetrations and flashings.

Colors:

White	Cool Sand	Cool Stone	Tan	Gray	Chemguard
-------	-----------	------------	-----	------	-----------

FLASHINGS & VENTS

C Cone



IB factory fabricated, dielectrically welded reinforced IB PVC Single-Ply base and a non-reinforced IB PVC Single-Ply upper. Designed for easy installation to reduce roof top labor and call backs by reducing workmanship errors.

Product No	Type	Color	Weight (lbs)
4-CW-R	C Cone	White	1.02
4-CG-R	C Cone	Gray	1.02
4-CT-R	C Cone	Tan	1.02
4-CS-R	C Cone	Cool Sand	1.02
4-CSTO-R	C Cone	Cool Stone	1.02
4-CCGW-R	C Cone	ChemGuard	1.02

Pipe Flashing Specifications

Product	Base Flashing	Base	Top	Height	Pipe Size	Box Qty
C Cone	17 1/2"	8"	4"	10 1/2"	4" - 7 1/2"	25

Use:

IB Pipe Flashings are typically installed around roof top penetrations such as pipe, conduit, gas lines and other circular profile penetrations and flashings.

Colors:

White	Cool Sand	Cool Stone	Tan	Gray	Chemguard
-------	-----------	------------	-----	------	-----------

D Cone



IB factory fabricated, dielectrically welded reinforced IB PVC Single-Ply base and a non-reinforced IB PVC Single-Ply upper. Designed for easy installation to reduce roof top labor and call backs by reducing workmanship errors.

Product No	Type	Color	Weight (lbs)
4-DW-R	D Cone	White	1.64
4-DG-R	D Cone	Gray	1.64
4-DT-R	D Cone	Tan	1.64
4-DS-R	D Cone	Cool Sand	1.64
4-DSTO-R	D Cone	Cool Stone	1.64
4-DCGW-R	D Cone	ChemGuard	1.64

Pipe Flashing Specifications

Product	Base Flashing	Base	Top	Height	Pipe Size	Box Qty
D Cone	23"	12"	7 1/2"	9"	7 1/2" - 9 1/2"	20

Use:

IB Pipe Flashings are typically installed around roof top penetrations such as pipe, conduit, gas lines and other circular profile penetrations and flashings.

Colors:

White	Cool Sand	Cool Stone	Tan	Gray	Chemguard
-------	-----------	------------	-----	------	-----------

E Cone



IB factory fabricated, dielectrically welded reinforced IB PVC Single-Ply base and a non-reinforced IB PVC Single-Ply upper. Designed for easy installation to reduce roof top labor and call backs by reducing workmanship errors.

Product No	Type	Color	Weight (lbs)
4-EW-R	E Cone	White	2.6
4-EG-R	E Cone	Gray	2.6
4-ET-R	E Cone	Tan	2.6
4-ES-R	E Cone	Cool Sand	2.6
4-ESTO-R	E Cone	Cool Stone	2.6
4-ECGW-R	E Cone	ChemGuard	2.6

Pipe Flashing Specifications

Product	Base Flashing	Base	Top	Height	Pipe Size	Box Qty
E Cone	28"	18"	9 1/2"	12"	9 1/2" - 11 1/2"	10

Use:

IB Pipe Flashings are typically installed around roof top penetrations such as pipe, conduit, gas lines and other circular profile penetrations and flashings.

Colors:

White	Cool Sand	Cool Stone	Tan	Gray	Chemguard
-------	-----------	------------	-----	------	-----------

0 to 5 Cone - 4"



IB factory fabricated, dielectrically welded reinforced IB PVC Single-Ply base and a non-reinforced IB PVC Single-Ply upper. Designed for easy installation to reduce roof top labor and call backs by reducing workmanship errors.

Product No	Type	Color	Weight
4-4025W-R	4" Cone	White	1.064
4-4025G-R	4" Cone	Gray	1.064
4-4025T-R	4" Cone	Tan	1.064
4-4025S-R	4" Cone	Cool Sand	1.064
4-4025STO-R	4" Cone	Cool Stone	1.064
4-4025CGW-R	4" Cone	ChemGuard	1.064

Pipe Flashing Specifications

Product	Base	Height	Qty
4" Round Cone	21"	5"	25

Colors:

White	Cool Sand	Cool Stone	Tan	Gray	Chemguard
-------	-----------	------------	-----	------	-----------

FLASHINGS & VENTS

0 to 5 Cone - 6"



IB factory fabricated, dielectrically welded reinforced IB PVC Single-Ply base and a non-reinforced IB PVC Single-Ply upper. Designed for easy installation to reduce roof top labor and call backs by reducing workmanship errors.

Product No	Type	Color	Weight (lbs)
4-6025W-R	6" Cone	White	1.079
4-6025G-R	6" Cone	Gray	1.079
4-6025T-R	6" Cone	Tan	1.079
4-6025S-R	6" Cone	Cool Sand	1.079
4-6025STO-R	6" Cone	Cool Stone	1.079
4-6025CGW-R	6" Cone	ChemGuard	1.079

Pipe Flashing Specifications

Product	Base	Height	Qty
6" Round Cone	24"	5"	25

Colors:

White	Cool Sand	Cool Stone	Tan	Gray	Chemguard
-------	-----------	------------	-----	------	-----------

0 to 5 Cone - 8"



IB factory fabricated, dielectrically welded reinforced IB PVC Single-Ply base and a non-reinforced IB PVC Single-Ply upper. Designed for easy installation to reduce roof top labor and call backs by reducing workmanship errors.

Product No	Type	Color	Weight (lbs)
4-8025W-R	8" Cone	White	1.66
4-8025G-R	8" Cone	Gray	1.66
4-8025T-R	8" Cone	Tan	1.66
4-8025S-R	8" Cone	Cool Sand	1.66
4-8025STO-R	8" Cone	Cool Stone	1.66
4-8025CGW-R	8" Cone	ChemGuard	1.66

Pipe Flashing Specifications

Product	Base	Height	Qty
8" Round Cone	26"	6 1/2"	25

Use:

IB Pipe Flashings are typically installed around roof top penetrations such as pipe, conduit, gas lines and other circular profile penetrations and flashings.

Colors:

White	Cool Sand	Cool Stone	Tan	Gray	Chemguard
-------	-----------	------------	-----	------	-----------

Oval 0 to 5 Cone - 4"



IB factory fabricated, dielectrically welded reinforced IB PVC Single-Ply base and a non-reinforced IB PVC Single-Ply upper. Designed for easy installation to reduce roof top labor and call backs by reducing workmanship errors.

Product No	Type	Color	Weight (lbs)
4-4OV025W-R	4" Oval Cone	White	1.079
4-4OV025G-R	4" Oval Cone	Gray	1.079
4-4OV025T-R	4" Oval Cone	Tan	1.079
4-4OV025S-R	4" Oval Cone	Cool Sand	1.079
4-4OV025STO-R	4" Oval Cone	Cool Stone	1.079
4-4OV025CGW-R	4" Oval Cone	ChemGuard	1.079

Pipe Flashing Specifications

Product	Base Flashing	Base	Top	Height	Box Qty
4" Oval Cone	22"	6" x 10"	3" x 6"	5"	25

Use:

IB Pipe Flashings are typically installed around roof top penetrations such as pipe, conduit, gas lines and other circular profile penetrations and flashings.

Colors:

White	Cool Sand	Cool Stone	Tan	Gray	Chemguard
-------	-----------	------------	-----	------	-----------

Non-Reinforced Detail Flashing Roll



Fabricated from a non-reinforced IB PVC Single-Ply Membrane. It is utilized for detail work which requires a flexible, easy to install membrane.

Product No	Type	Color	Weight (lbs)
1-60WGNRF	60 Mil Roll	White	9.14
1-45BNZNRF	45 Mil Roll	Bronze	8.0
1-60GNRF	60 Mil Roll	Gray	9.14
1-60TNRF	60 Mil Roll	Tan	9.14
1-60SNRF	60 Mil Roll	Cool Sand	9.14
1-60STONRF	60 Mil Roll	Cool Stone	9.14

Packaging:

Size	Thickness	Weight (lbs)	Pallet
1' x 22'	60 Mil	10	

Use:

IB N.R. Detail Flashing Rolls are used in a variety of IB Construction Details and in difficult to flash areas such as at canted corners, field wrapped penetrations and detailing joints in IB PVC Clad metal flashings.

Colors:

White	Cool Sand	Cool Stone	Tan	Gray	Bronze
-------	-----------	------------	-----	------	--------

FLASHINGS & VENTS

Round T-Joint Patch



Generally used to patch T-joints (mandatory on 80 mil projects).

Product No	Type	Color	Weight (lbs)
4-RP50W	T-Joint Patch	White	2.09
4-RP50G	T-Joint Patch	Gray	2.09
4-RP50T	T-Joint Patch	Tan	2.09
4-RP50S	T-Joint Patch	Cool Sand	2.09
4-RP50STO	T-Joint Patch	Cool Stone	2.09
4-RP50CGV	T-Joint Patch	ChemGuard	2.09
4-RP50BRN	T-Joint Patch	Brown	2.09
4-RP50R	T-Joint Patch	Red	2.09
4-RP50GRN	T-Joint Patch	Green	2.09

Packaging:

Size	Thickness	Weight (lbs)	Bag
5"	80 Mil	3.5	50

Colors:

White	Cool Sand	Cool Stone	Tan	Gray	Chemguard
-------	-----------	------------	-----	------	-----------

Inside Corner



Fabricated from 60 mil, non-reinforced IB PVC Single-Ply for easy installation to reduce roof top labor and call backs by reducing workmanship errors. Designed for non-canted 90° inside corners.

Product No	Type	Color	Weight (lbs)
4-MICW	Molded Inside Corner	White	0.09
4-MICG	Molded Inside Corner	Gray	0.09
4-MICT	Molded Inside Corner	Tan	0.09
4-MICS	Molded Inside Corner	Cool Sand	0.09
4-ICSTO	Inside Corner	Cool Stone	0.09
4-ICGDS	Inside Corner	DeckShield Gray	0.09
4-ICTDS	Inside Corner	DeckShield Tan	0.09

Specifications

Type of Corner	Height	Width	Qty
Inside Corner	5"	5"	25 per box

Colors:

White	Cool Sand	Cool Stone	Tan	Gray
-------	-----------	------------	-----	------

IB Pitch Pan



Fabricated from IB PVC Clad Metal constructed with durable 45 mil non-reinforced IB PVC film laminated to 24 gauge, G90 coated galvanized sheet metal.

Product No	Type	Color	Weight (lbs)
4-PP4	4" Pitch Pan	White	13.5
4-PP6	6" Pitch Pan	White	13.5
4-PP8	8" Pitch Pan	White	13.5

Feature:

- Split pan format for ease of installation
- Factory welded reinforced membrane target
- Integral flanges for securement
- Custom orders available for a variety of membrane thicknesses and color options

Colors: *All other colors are custom

White

Outside Corner



Fabricated from 60 mil, non-reinforced IB PVC Single-Ply for easy installation to reduce roof top labor and call backs by reducing workmanship errors. Designed for non-canted 90° outside corner details.

Product No	Type	Color	Weight (lbs)
4-MOCW	Molded Outside Corner	White	0.53
4-MOCG	Molded Outside Corner	Gray	0.53
4-MOCT	Molded Outside Corner	Tan	0.53
4-MOCS	Molded Outside Corner	Cool Sand	0.53
4-MOCSTO	Molded Outside Corner	Cool Stone	0.53
4-OCSTO	Outside Corner	Cool Stone	0.53

Specifications

Type of Corner	Height	Width	Qty
Outside Corner	5"	5"	50

Colors:

White	Cool Sand	Cool Stone	Tan	Gray
-------	-----------	------------	-----	------

FLASHINGS & VENTS

Universal Outside Corner



Fabricated from 60 mil, non-reinforced IB PVC Single-Ply for easy installation to reduce roof top labor and call backs by reducing workmanship errors. Designed for use on canted or irregular outside corner details.

Product No	Type	Color	Weight (lbs)
4-MUCW	Universal Corner	White	0.15

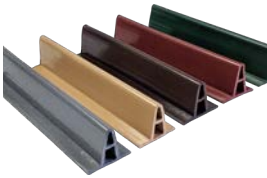
Specifications

Type of Corner	Height	Width	Qty
Universal Corner	7"	7"	25

Colors:



Flexible Metal Profile



IB Flexible Metal Profiles are specially designed to provide the aesthetic appeal of a standing seam metal roof.

Packaging:
35 per box
Weight:
2.0 LB per Profile (70lbs / box)

Product No	Type	Color
4-FMPG	Profile	Gray
4-FMPT	Profile	Tan
4-FMPR	Profile	Red
4-FMPGRN	Profile	Green
4-FMPBRN	Profile	Brown

*Texas Only Warehouse

Product Specs:

Flexible Metal Profiles are 10' feet in length Profile height is 1-1/8" Rib profile is 1/4" wide at top and 5/8" wide at base Base flange width is 1-3/8"

Use:

IB Flexible Metal Profiles are sold as accessory products used in conjunction with select IB PVC membranes.

Colors:



Foil Tape



High-quality, high tensile strength aluminum foil coated in epoxy resin with strong, cold-weather solvent acrylic adhesive set on a easy-release silicone paper liner to preserve the adhesive and provide ease of use.

Product No	Type
2-FT2	2" Foil Tape

Packaging:

Size	Weight (lbs)	Pack
2" x 150'	1.5 per roll	individual rolls or 24 per box

IB Cover Strip



Fabricated from a polyester scrim reinforced, compounded PVC resin based sheet with plasticizers, stabilizers, fillers, pigments and other proprietary materials.

Packaging:

Size	Thickness
6" x 90'	50 Mil
6" x 90'	60 Mil
6" x 60'	80 Mil

Product No	Type	Color	Weight (lbs)
1-60CSW	60 Mil 6" x 90 Strip	White	18.1
1-60CSG	60 Mil 6" x 90 Strip	Gray	18.1
1-60CST	60 Mil 6" x 90 Strip	Tan	18.1
1-60CSS	60 Mil 6" x 90 Strip	Cool Sand	18.1
1-60CSSTO	60 Mil 6" x 90 Strip	Cool Stone	18.1
1-80CSW	80 Mil 6" x 60 Strip	White	14.9
1-80CSG	80 Mil 6" x 60 Strip	Gray	14.9
1-80CSCGW	80 Mil 6" x 60 Strip	Chemguard White	14.9
*1-5012CSCGW	50 Mil 12"x90' Strip	CG White	35
*1-5012CSG	50 Mil 12"x90' Strip	Gray	35
*1-5012CST	50 Mil 12"x90' Strip	Tan	35
*1-5012CSW	50 Mil 12"x90' Strip	White	35
*1-8012CSG	80 Mil 12"x60' Strip	Gray	29.8
*1-8012CST	80 Mil 12"x60' Strip	Tan	29.8
* Not Stocked			

Use:

- Flashing roll for stripping-in IB PVC Clad Metal Drip Edge, Gravel Stop and clad metal flashings
- Flashing roll used as a cover strip over mechanically fastened batten-bars; over intermediate termination bars or fastener rows on walls, and over supplemental exposed fastening rows at Perimeter and Corner roof zones
- Flashing roll for detailing IB PVC Single Ply Fleece back end laps

Colors:



IB Non-Reinforced 5" X 8" Metal Joint Patch



Fabricated from a durable non-reinforced IB PVC film with acrylic finish.

Product No	Type	Color
1-NRBJ	NR Metal Patch	White
1-NRBJG	NR Metal Patch	Gray
1-NRBJT	NR Metal Patch	Tan
1-NRBJ45BNZ	NR Metal Patch	Bronze

Packaging:

Size	Thickness	Weight (lbs)	Bag
5" x 8"	60 Mil	5 per pack	50 per bag
*45 Mil Bronze Only			

Colors:



FLASHINGS & VENTS

U-Anchor 1400



The U1400-PVC is a lightweight rooftop attachment system consisting of a U-Anchor 1000 Series plate and cover membrane. The cover membrane is factory sealed to the top of the plate. For mechanically attached and fully adhered PVC single-ply membranes.

Product No | Type

6-UA140038 | U-Anchor
(Specify color when ordering)

***Special Order**

Product Specs

Standard Bolt - 3/8"-16 x 1 - 3/8"

***(Please note on order if you need a different size)**

Material Type: 304 Stainless Steel

Plate

Outer Diameter: 4.75"

Fastener Hole Diameter: 0.236" (4 holes)

Fastener Hole Pattern: 2.49" Diameter

Material Thickness: 0.039"

Material Type: Galvalume® AZ55

Membrane

Color: Default White*

Length: 9.75"

Width: 9.75"

Colors:

U-Anchor 2000



The U-Anchor 2000-PVC is a lightweight rooftop attachment system consisting of a thermoplastic target membrane and a U-Anchor 2000 series plate. For fully adhered PVC single-ply membranes.

Product No | Type

6-UA2000 | U-Anchor
(Specify color when ordering)

***Special Order**

Product Specs

Bolt - 3/8"-16 x 1.5" Bolt*

Material Type: 304 Stainless Steel

Plate

Outer Diameter: 5-1/2"

Fastener Hole Diameter: 17/64" (8 holes)

Fastener Hole Pattern: 4-1/8" Diameter

Material Thickness: 0.047" (1.194mm)

Material Type: Galvalume® AZ55

Membrane

Color: Default White*

Length: 15.75"

Width: 15.75"

Thickness: Default 60 mil*

Colors:

U-Anchor 2400



The U2400-PVC is a lightweight rooftop attachment system consisting of a U-Anchor 2000 Series plate and cover membrane. The cover membrane is factory sealed to the top of the plate. For mechanically attached and fully adhered PVC single-ply membranes.

Product No | Type

6-UA2400W | U-Anchor

6-UA2400S | U-Anchor

6-UA2400STO | U-Anchor

6-UA2400T | U-Anchor

6-UA2400G | U-Anchor

6-UA2400CGW | U-Anchor

Color

White*

Cool Sand

Cool Stone

Tan

Gray*

Chemguard White

***Limited stock with 60mil bases
in NV in White and Gray only**

Colors:**Product Specs**

3/8"-16 x 1.5" Attachment Bolt*

Material Type: 304 Stainless Steel

Plate

Outer Diameter: 5-1/2"

Fastener Hole Diameter: 17/64" (8 holes)

Fastener Hole Pattern: 4-1/8" Diameter

Material Thickness: 0.047" (1.194mm)

Material Type: Galvalume® AZ55

Color: Default White*

Length: 11.75"

Width: 11.75"

Thickness: Default 60 mil*

Packaging

Sold Individually / Full Box Quantity

Individual Weight:

Approx. 0.75 lbs

Full Box Quantity:

10 units

Box Weight:

Approx. 10 lbs

FLASHINGS & VENTS

U-Anchor 3400



The U3400-PVC is attached by fastening through the roofing assembly into the structural decking with 2-12 approved fasteners. The membrane cover is then hot air welded around the perimeter to the roof membrane. For mechanically attached and fully adhered PVC single-ply membranes.

Product No | **Type**
 6-UA3400 | U-Anchor
 (Specify color when ordering)
 *Special Order

Colors:



Product Specs

Fastener

3/8"-16 x 1.5" Attachment Bolt*
 Material Type: 304 Stainless Steel

Plate

Dimensions: 11.08" x 5.47"
 Fastener Hole Diameter: 17/64" (12 holes)
 Material Thickness: 0.047" (1.194mm)
 Material Type: Galvalume® AZ55

Membrane

Color: Default White*
 Length: 17.5"
 Width: 11.75"
 Thickness: Default 60 mil*

Packaging

Sold Individually OR Full Box
 Quantity
 Individual Weight: Approx. 1.4 lbs
 Full Box Quantity: 10 units
 Box Weight: Approx. 14 lbs

U-Anchor 4400



The U4400-PVC is a lightweight rooftop attachment system consisting of a U-Anchor 4000 Series plate and cover membrane. The cover membrane is factory sealed to the top of the plate. For mechanically attached PVC single-ply membranes.

Product No | **Type**
 6-UA440038 | U-Anchor
 (Specify color when ordering)
 *Special Order

Colors:



Product Specs

Fastener

3/8"-16 x 1.5" Attachment Bolt*
 Material Type: 304 Stainless Steel

Plate

Outer Diameter: 14.267"
 Inner Fastener Hole Pattern: 9.185" (8 holes)
 Outer Fastener Hole Pattern: 13" (4 holes)
 Material Thickness: 0.118"
 Material Type: Galvalume® AZ55

Membrane

Color: Default White*
 Length: 17.5"
 Width: 17.5"
 Thickness: Default 60 mil*

Packaging

Sold Individually OR Full Box
 Quantity
 Individual Weight: Approx. 4 lbs
 Full Box Quantity: 4 units
 Box Weight: Approx. 16 lbs

U-Anchor Fall Protection System



The Fall Arrest Anchor is suited for membrane and built-up roof systems. It is ideally suited for maintenance personnel working at heights utilizing a harness and a fixed length lanyard or rope. The anchor point incorporates a unique energy absorbing swivel eye attachment point, which provides 360° working radius.

Product No | **Type**
 6-UAFP | U-Anchor
 (Specify color when ordering)
 *Special Order

E-Curb Kits - 4" Round



IB E-Curb System penetration seals replace old-style metal pitch pans with versatile precast components and pourable sealants. The E-Curb System can usually be installed in under 15 minutes and is available in convenient kits.

Product No | Type | Weight (lbs)
4-ECURB4 | 4" Round Kit | 9
**Special Order*

Includes:
 M-1 & pourable sealant, 4 sets of bases  Requires ground shipping/additional shipping

E-Curb Kits - 6" Round



IB E-Curb System penetration seals replace old-style metal pitch pans with versatile precast components and pourable sealants. The E-Curb System can usually be installed in under 15 minutes and is available in convenient kits.

Product No | Type | Weight (lbs)
4-ECURB6 | 6" Round Kit | 12
**Special Order*

Includes:
 M-1 & pourable sealant, 3 sets of bases  Requires ground shipping/additional shipping

E-Curb Kits - Universal



IB E-Curb System penetration seals replace old-style metal pitch pans with versatile precast components and pourable sealants. The E-Curb System can usually be installed in under 15 minutes and is available in convenient kits.

Product No | Type | Weight
4-EKIT | Universal Kit | 14
**Special Order*

Includes:
 M-1 & pourable sealant, 1 set of bases  Requires ground shipping/additional shipping

IB Recover Membrane Vent



Only available in two-way style. Made of Heavy Duty UV Stabilized PVC. Cap is permanently attached. An IB Membrane Target Patch is dielectrically welded to the flange.

Product No	Type	Color	Weight (lbs)
5-05PVCW-R	5" Vent	White	2
5-05PVCGR-R	5" Vent	Gray	2
5-05PVCT-R	5" Vent	Tan	2
5-05PVCS-R	5" Vent	Cool Sand	2
5-05PVCSTO-R	5" Vent	Cool Stone	2
5-05PVCCGW-R	5" Vent	ChemGuard	2

IB 10" Roof Vent



Super Heavy Duty UV Stabilized PVC with integral insect resistant scree. Deck flange includes pre-drilled holes for easy attachment to the roof deck. Cap is permanently attached to resist damage. Comes with an IB membrane target patch dielectrically welded to the flange. Net free ventilation area of 52 square inches per vent.

Product No	Type	Color	Weight (lbs)
5-08PVCW-R	10" Vent	White	7
5-08PVCGR-R	10" Vent	Gray	7
5-08PVCT-R	10" Vent	Tan	7
5-08PVCS-R	10" Vent	Cool Sand	7
5-08PVCSTO-R	10" Vent	Cool Stone	7
5-08PVCCGW-R	10" Vent	ChemGuard	7

Colors:



White Vents:
 Base - White, Cool Sand, Cool Stone

Tan Vents:
 Base - Tan

Gray Vents:
 Base - Gray

Black Vents:
 Base - Brown, Red, Green

Note:

* IB Requires 1 for every 1,000 sq ft on mechanically attached and recover assemblies.

Colors:



White Vents:
 Base - White, Cool Sand, Cool Stone

Tan Vents:
 Base - Tan

Gray Vents:
 Base - Gray

Black Vents:
 Base - Brown, Red, Green

FLASHINGS & VENTS

IB Dryer Vent / Exhaust Vent & Vent No-Cone



Heavy-duty metal two-piece general purpose roof exhaust vent consisting of a Kynar 500® finished vent hood shipped with a ready to install galvanized flanged metal base. It comes equipped with an integral clamping band for easy, quick installation over factory fabricated IB PVC no-cone flashings. Vent hood is removable as required for general maintenance or periodic cleaning.

Product No	Type	Color	Weight (lbs)
5-04DEW	4" Vent & Hood	White	5
5-04DEG	4" Vent & Hood	Gray*	5
5-04DET	4" Vent & Hood	Tan*	5
5-04DEBLK	4" Vent & Hood	Black*	5
*Special Order			
5-06DEW	6" Vent & Hood	White*	6
5-06DEG	6" Vent & Hood	Gray*	6
5-06DET	6" Vent & Hood	Tan*	6
5-06DEBLK	6" Vent & Hood	Black*	6
5-08DEW	8" Vent & Hood	White*	7
5-08DEG	8" Vent & Hood	Gray*	7
5-08DET	8" Vent & Hood	Tan*	7
5-08DEBLK	8" Vent & Hood	Black*	7

Features:

- Built-in back draft dampers close when not in use
- Can be used for dryer, kitchen and bath exhaust vent
- 4" drop for easy connection to exhaust duct

Packaging:

One unit per box - includes vent hood, base, and optional screens for non-dryer use application

Hood Colors: * Brown and Black add \$5 charge

White	Gray	Tan	Black
-------	------	-----	-------

IB Vent No-Cone

Product No	Type	Color	
4-4DVW-R	4" No-Cone	White	1
4-4DVG-R	4" No-Cone	Gray	1
4-4DVT-R	4" No-Cone	Tan	1
4-4DVS-R	4" No-Cone	Cool Sand	1
4-4DVSTO-R	4" No-Cone	Cool Stone	1
4-4DVCGW-R	4" No-Cone	ChemGuard	1
4-4DVBRN-R	4" No-Cone	Brown	1
4-4DVR-R	4" No-Cone	Red	1
4-4DVGRN-R	4" No-Cone	Green	1

Made to Order

4-6DVW-R	6" No-Cone	White	1
4-6DVG-R	6" No-Cone	Gray	1
4-6DVT-R	6" No-Cone	Tan	1
4-6DVS-R	6" No-Cone	Cool Sand	1
4-6DCSTO-R	6" No-Cone	Cool Stone	1
4-6DVCGR-R	6" No-Cone	ChemGuard	1
4-6DVBRN-R	6" No-Cone	Brown	1
4-6DVGRN-R	6" No-Cone	Green	1
4-6DVR-R	6" No-Cone	Red	1

4-8DVW-R	8" No-Cone	White	1
4-8DVG-R	8" No-Cone	Gray	1

Colors: * No Cone colors

White	Cool Sand	Cool Stone	Tan	Gray	Chemguard
-------	-----------	------------	-----	------	-----------

DRAINS

2" IB Retrofit Drain & Target



Designed as an option for installation into various sized existing leader pipes. Constructed from a heavy-duty one-piece spun aluminum body with cast aluminum clamping rings. Factory applied IB retrofit drain target sheet for easy weldable application.

Product No	Type	Color	Weight (lbs)
5-2RFDW-R	Drain Target	White	11
5-2RFDG-R	Drain Target	Gray	11
5-2RFDT-R	Drain Target	Tan	11
5-2RFDS-R	Drain Target	Cool Sand	11
5-2RFDSTO-R	Drain Target	Cool Stone	11
5-2RFDCGW-R	Drain Target	ChemGuard	11

Features:

- One-piece seamless heavy-duty body manufactured from 0.81 ga spun aluminum
- Extra large 16" diameter drain flange
- Factory applied and sealed reinforced 23" x 23" IB membrane target

Colors:



3" IB Retrofit Drain & Target



Designed as an option for installation into various sized existing leader pipes. Constructed from a heavy-duty one-piece spun aluminum body with cast aluminum clamping rings. Factory applied IB retrofit drain target sheet for easy weldable application.

Product No	Type	Color	Weight (lbs)
5-3RFDW-R	Drain Target	White	11.3
5-3RFDG-R	Drain Target	Gray	11.3
5-3RFDT-R	Drain Target	Tan	11.3
5-3RFDS-R	Drain Target	Cool Sand	11.3
5-3RFDSTO-R	Drain Target	Cool Stone	11.3
5-3RFDCGW-R	Drain Target	ChemGuard	11.3

Features:

- One-piece seamless heavy-duty body manufactured from 0.81 ga spun aluminum
- Extra large 16" diameter drain flange
- Factory applied and sealed reinforced 23" x 23" IB membrane target

Colors:



4" IB Retrofit Drain & Target



Designed as an option for installation into various sized existing leader pipes. Constructed from a heavy-duty one-piece spun aluminum body with cast aluminum clamping rings. Factory applied IB retrofit drain target sheet for easy weldable application.

Product No	Type	Color	Weight (lbs)
5-4RFDW-R	Drain Target	White	11
5-4RFDG-R	Drain Target	Gray	11
5-4RFDT-R	Drain Target	Tan	11
5-4RFDS-R	Drain Target	Cool Sand	11
5-4RFDSTO-R	Drain Target	Cool Stone	11
5-4RFDCGW-R	Drain Target	ChemGuard	11

Features:

- One-piece seamless heavy-duty body manufactured from 0.81 ga spun aluminum
- Extra large 16" diameter drain flange
- Factory applied and sealed reinforced 23" x 23" IB membrane target

Colors:



5" IB Retrofit Drain & Target



Designed as an option for installation into various sized existing leader pipes. Constructed from a heavy-duty one-piece spun aluminum body with cast aluminum clamping rings. Factory applied IB retrofit drain target sheet for easy weldable application.

Product No	Type	Color	Weight (lbs)
5-5RFDW-R	Drain Target	White	12
5-5RFDG-R	Drain Target	Gray	12
5-5RFDT-R	Drain Target	Tan	12
5-5RFDS-R	Drain Target	Cool Sand	12
5-5RFDSTO-R	Drain Target	Cool Stone	12
5-5RFDCGW-R	Drain Target	ChemGuard	12

*Special Order

Features:

- One-piece seamless heavy-duty body manufactured from 0.81 ga spun aluminum
- Extra large 16" diameter drain flange
- Factory applied and sealed reinforced 23" x 23" IB membrane target

Colors:



DRAINS

6" IB Retrofit Drain & Target



Designed as an option for installation into various sized existing leader pipes. Constructed from a heavy-duty one-piece spun aluminum body with cast aluminum clamping rings. Factory applied IB retrofit drain target sheet for easy weldable application.

Product No	Type	Color	Weight (lbs)
5-6RFDW-R	Drain Target	White	12.3
5-6RFDG-R	Drain Target	Gray	12.3
5-6RFDT-R	Drain Target	Tan	12.3
5-6RFDOS-R	Drain Target	Cool Sand	12.3
5-6RFDOSTO-R	Drain Target	Cool Stone	12.3
5-6RFDOSGW-R	Drain Target	ChemGuard	12.3

*Special Order

Features:

- One-piece seamless heavy-duty body manufactured from 0.81 ga spun aluminum
- Extra large 16" diameter drain flange
- Factory applied and sealed reinforced 23" x 23" IB membrane target

Colors:

White	Cool Sand	Cool Stone	Tan	Gray	ChemGuard
-------	-----------	------------	-----	------	-----------

2" IB Retrofit Overflow Drain & Target



Designed as an option for installation into various sized existing leader pipes. Constructed from a heavy-duty one-piece spun aluminum body with cast aluminum clamping rings. Factory applied IB retrofit drain target sheet for easy weldable application.

Product No	Type	Color	Weight (lbs)
5-2RFDOW-R	Drain Target	White	18
5-2RFDOSG-R	Drain Target	Gray	18
5-2RFDOT-R	Drain Target	Tan	18
5-2RFDOS-R	Drain Target	Cool Sand	18
5-2RFDOSTO-R	Drain Target	Cool Stone	18
5-2RFDOSGW-R	Drain Target	ChemGuard	18

Features:

- One-piece seamless heavy-duty body manufactured from 0.81 ga spun aluminum
- Extra large 16" diameter drain flange
- Factory applied and sealed reinforced 23" x 23" IB membrane target
- 2" drain comes with a 2" wide band of high density expanding foam tape in place of the ProSeal rubber seal

Colors:

White	Cool Sand	Cool Stone	Tan	Gray	ChemGuard
-------	-----------	------------	-----	------	-----------

3" IB Retrofit Overflow Drain & Target



Designed as an option for installation into various sized existing leader pipes. Constructed from a heavy-duty one-piece spun aluminum body with cast aluminum clamping rings. Factory applied IB retrofit drain target sheet for easy weldable application.

Product No	Type	Color	Weight (lbs)
5-3RFDOW-R	Drain Target	White	18.3
5-3RFDOSG-R	Drain Target	Gray	18.3
5-3RFDOT-R	Drain Target	Tan	18.3
5-3RFDOS-R	Drain Target	Cool Sand	18.3
5-3RFDOSTO-R	Drain Target	Cool Stone	18.3
5-3RFDOSGW-R	Drain Target	ChemGuard	18.3

Features:

- One-piece seamless heavy-duty body manufactured from 0.81 ga spun aluminum
- Extra large 16" diameter drain flange
- Factory applied and sealed reinforced 23" x 23" IB membrane target

Colors:

White	Cool Sand	Cool Stone	Tan	Gray	ChemGuard
-------	-----------	------------	-----	------	-----------

4" IB Retrofit Overflow Drain & Target



Designed as an option for installation into various sized existing leader pipes. Constructed from a heavy-duty one-piece spun aluminum body with cast aluminum clamping rings. Factory applied IB retrofit drain target sheet for easy weldable application.

Product No	Type	Color	Weight (lbs)
5-4RFDOW-R	Drain Target	White	18.6
5-4RFDOSG-R	Drain Target	Gray	18.6
5-4RFDOT-R	Drain Target	Tan	18.6
5-4RFDOS-R	Drain Target	Cool Sand	18.6
5-4RFDOSTO-R	Drain Target	Cool Stone	18.6
5-4RFDOSGW-R	Drain Target	ChemGuard	18.6

Features:

- One-piece seamless heavy-duty body manufactured from 0.81 ga spun aluminum
- Extra large 16" diameter drain flange
- Factory applied and sealed reinforced 23" x 23" IB membrane target

Colors:

White	Cool Sand	Cool Stone	Tan	Gray	ChemGuard
-------	-----------	------------	-----	------	-----------

DRAINS

5" IB Retrofit Overflow Drain & Target



Designed as an option for installation into various sized existing leader pipes. Constructed from a heavy-duty one-piece spun aluminum body with cast aluminum clamping rings. Factory applied IB retrofit drain target sheet for easy weldable application.

Product No	Type	Color	Weight (lbs)
5-5RFDOW-R	Drain Target	White	19
5-5RFD OG-R	Drain Target	Gray	19
5-5RFDOT-R	Drain Target	Tan	19
5-5RFDOS-R	Drain Target	Cool Sand	19
5-5RFDOSTO-R	Drain Target	Cool Stone	19
5-5RFD OCGW-R	Drain Target	ChemGuard	19

*Special Order

Features:

- One-piece seamless heavy-duty body manufactured from 0.81 ga spun aluminum
- Extra large 16" diameter drain flange
- Factory applied and sealed reinforced 23" x 23" IB membrane target

Colors:

White	Cool Sand	Cool Stone	Tan	Gray	Chemguard
-------	-----------	------------	-----	------	-----------

6" IB Retrofit Overflow Drain & Target



Designed as an option for installation into various sized existing leader pipes. Constructed from a heavy-duty one-piece spun aluminum body with cast aluminum clamping rings. Factory applied IB retrofit drain target sheet for easy weldable application.

Product No	Type	Color	Weight (lbs)
5-6RFDOW-R	Drain Target	White	19.3
5-6RFD OG-R	Drain Target	Gray	19.3
5-6RFDOT-R	Drain Target	Tan	19.3
5-6RFDOS-R	Drain Target	Cool Sand	19.3
5-6RFDOSTO-R	Drain Target	Cool Stone	19.3
5-6RFD OCGW-R	Drain Target	ChemGuard	19.3

*Special Order

Features:

- One-piece seamless heavy-duty body manufactured from 0.81 ga spun aluminum
- Extra large 16" diameter drain flange
- Factory applied and sealed reinforced 23" x 23" IB membrane target

Colors:

White	Cool Sand	Cool Stone	Tan	Gray	Chemguard
-------	-----------	------------	-----	------	-----------

DRAINS

2" IB Drain Liner & Drop Scupper



Fabricated with round straight tube leaders and a reinforced IB PVC Single-Ply target flashing that allows for easy application.

Drop length 10"

Product No	Type	Color	Weight (lbs)
5-DS2	2" Drop Scupper		0.48

2" IB Drain Liner

5-DL2W-R	2" Drain Liner	White	
5-DL2G-R	2" Drain Liner	Gray	1
5-DL2T-R	2" Drain Liner	Tan	1
5-DL2S-R	2" Drain Liner	Cool Sand	1
5-DL2STO-R	2" Drain Liner	Cool Stone	1
5-DL2CGW-R	2" Drain Liner	ChemGuard	1

Colors:

White	Cool Sand	Cool Stone	Tan	Gray	Chemguard
-------	-----------	------------	-----	------	-----------

3" IB Drain Liner & Drop Scupper



Fabricated with round straight tube leaders and a reinforced IB PVC Single-Ply target flashing that allows for easy application.

Drop length 10"

Product No	Type	Color	Weight (lbs)
5-DS3	3" Drop Scupper		0.56

3" IB Drain Liner

5-DL3W-R	3" Drain Liner	White	1
5-DL3G-R	3" Drain Liner	Gray	1
5-DL3T-R	3" Drain Liner	Tan	1
5-DL3S-R	3" Drain Liner	Cool Sand	1
5-DL3STO-R	3" Drain Liner	Cool Stone	1
5-DL3CGW-R	3" Drain Liner	ChemGuard	1

Colors:

White	Cool Sand	Cool Stone	Tan	Gray	Chemguard
-------	-----------	------------	-----	------	-----------

4" IB Drain Liner & Drop Scupper



Fabricated with round straight tube leaders and a reinforced IB PVC Single-Ply target flashing that allows for easy application.

Drop length 10"

Product No	Type	Color	Weight (lbs)
5-DS4	4" Drop Scupper		1

4" IB Drain Liner

5-DL4W-R	4" Drain Liner	White	1
5-DL4G-R	4" Drain Liner	Gray	1
5-DL4T-R	4" Drain Liner	Tan	1
5-DL4S-R	4" Drain Liner	Cool Sand	1
5-DL4STO-R	4" Drain Liner	Cool Stone	1
5-DL4CGW-R	4" Drain Liner	ChemGuard	1

Colors:

White	Cool Sand	Cool Stone	Tan	Gray	Chemguard
-------	-----------	------------	-----	------	-----------

2" IB Wood Deck Drain



- Galvanized steel flange fastens to deck
- Surface membrane clamp secures finish covering
- 5" diameter corrosion resistant heel proof aluminum grate
- 2" ABGS socket outlet

Product No	Type	Color	Weight (lbs)
5-2DD	4" Drop Scupper		1

METALS

IB Clad Drip Edge Metal



Fabricated with a durable 45 mil non-reinforced IB PVC film with acrylic finish, laminated to 24 gauge, G90 galvanized sheet metal. Formed into standard metal drip edge profile with a hemmed kick-out at the bottom to provide a corrosion resistant, heat-weldable perimeter roof edge termination.

Product No	Type	Color	Weight (lbs)
2-2.5DEKO	2.5" Drip Edge	White	6
2-B2.5DEKO	2.5" Drip Edge	Bronze	6
2-T2.5DEKO	2.5" Drip Edge	Tan	6
2-G2.5DEKO	2.5" Drip Edge	Gray	6
2-4DEKO	4" Drip Edge	White	7.5
2-B4DEKO	4" Drip Edge	Bronze	7.5
2-T4DEKO	4" Drip Edge	Tan	7.5
2-G4DEKO	4" Drip Edge	Gray	7.5

Custom sizes available - Special Order

Colors:



IB Clad Gravel Stop Metal



Fabricated with a durable 45 mil non-reinforced IB PVC film with acrylic finish, laminated to 24 gauge, G90 galvanized sheet metal. Formed into a gravel stop edge profile with 3/4" rise and a hemmed kick-out at the bottom to provide a corrosion resistant, heat-weldable perimeter roof edge termination.

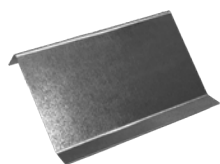
Product No	Type	Color	Weight (lbs)
2-2.5GSKO	2.5" Gravel Stop	White	7.75
2-B2.5GSKO	2.5" Gravel Stop	Bronze	7.75
2-T2.5GSKO	2.5" Gravel Stop	Tan	7.75
2-G2.5GSKO	2.5" Gravel Stop	Gray	7.75
2-4GSKO	4" Gravel Stop	White	9.25
2-B4GSKO	4" Gravel Stop	Bronze	9.25
2-T4GSKO	4" Gravel Stop	Tan	9.25
2-G4GSKO	4" Gravel Stop	Gray	9.25

Custom sizes available - Special Order

Colors:



IB Metal Cleat



Assembly consists of IB Clad Drip Edge formed into a metal profile to provide a clean, durable edge termination with a hemmed kick-out designed for use with continuous metal cleats.

Product No	Type	Weight (lbs)
2-2.5GALVCLEAT	2.5" Galvanized Cleat	3.5
2-4GALVCLEAT	4" Galvanized Cleat	6

IB Clad Drip Edge Stainless Steel Metal



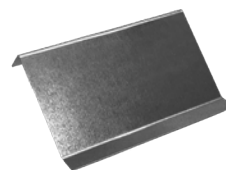
Fabricated with a durable 45 mil non-reinforced IB PVC film with acrylic finish, laminated to 24 gauge, 304 Stainless Steel sheet metal. It is formed into standard metal drip edge profile with a hemmed kick-out at the bottom to provide a corrosion resistant, heat-weldable perimeter roof edge termination.

Product No	Type	Color	Weight (lbs)
2-SS2.5DEKO	2.5" SS Drip Edge	White	6
2-SS4DEKO	4" SS Drip Edge	White	7.5

Colors:



IB Stainless Steel Cleat



Assembly consists of a stainless steel IB Clad Drip Edge formed into a metal profile to provide a clean, durable edge termination with a hemmed kick-out designed for use with continuous metal cleats.

Product No (lbs)	Type	Weight
2-2.5SSCLEAT	2.5" Stainless Cleat	5
2-4SSCLEAT	4" Stainless Cleat	6

IB Clad Gravel Stop Stainless Steel Metal



Fabricated with a durable 45 mil non-reinforced IB PVC film with acrylic finish, laminated to 24 gauge, 304 Stainless Steel sheet metal. It is formed into a gravel stop edge profile with 3/4" rise and a hemmed kick-out at the bottom to provide a corrosion resistant, heat-weldable perimeter roof edge termination.

Product No	Type	Color	Weight (lbs)
2-SS2.5GSKO	2.5" SS Gravel Stop	White	6
2-SS4GSKO	4" SS Gravel Stop	White	8

Colors:



IB Aluminum Termination Bar



Designed to terminate Single-Ply membrane to parapet walls and other penetrations.

Product No	Type	Weight (lbs)
2-8TBALUM	1" Aluminum Term Bar	1.1

Features:

- Made of extruded aluminum with a mil finish
- Oval holes that measure 1/4" x 3/8" are punched into each bar, with a standard spacing of 6" or 12" on center
- Can be made to order with special hole spacing

METALS

IB Clad Termination Bar



Fabricated from 24 gauge, G90 galvanized sheet metal with a durable 45 mil non-reinforced IB PVC film with acrylic finish laminated to the top surface. Bars are 2" wide with a hemmed caulk lip on the top and a hemmed bottom edge and can be installed over membrane flashings at vertical surfaces.

Product No	Type	Color
2-8TBPVC	2" KO Clad Term Bar	White
2-T8TBPVC	2" KO Clad Term Bar	Tan
2-G8TBPVC	2" KO Clad Term Bar	Gray
2-B8TBPVC	2" KO Clad Term Bar	Bronze
2-8SSTBPVC	2" KO SS Clad Term Bar	White

Features:

- Durable 45 mil IB PVC non-reinforced film laminated to metal
- Acrylic finish top surface
- Installed either on top or underneath the roofing membrane

Packaging:

Sold as individual sections
50 pieces / box
3 lbs / piece

Colors:



IB Snap Fascia



Two part assembly with a raised rigid retainer/clip base plate and a raised decorative, snap on facing cover designed for terminating Single-Ply roofing systems at the perimeter edges, or for vertically terminating Single-Ply base flashing.

24 Gauge 2.5" / weight 5 lbs

Product No	Type	Color
2-SFW	Snap Fascia	White
2-SFG	Snap Fascia	Gray
2-SFT	Snap Fascia	Tan
2-SFB	Snap Fascia	Bronze

*Only Stocked in GA

Features:

- Can be used as an edge termination like an edge, rake, or ridge metal can be used as a surface mounted counter flashing for vertical base flashing applications
- Design allows for a dual sealant termination by providing a continuous positive pressure compression of the roofing membrane to the underlying structure
- Optional Kynar 500 coated formed raised aluminum finishes and thickness'

Colors:



AnchorTite® Drip Edge



The patented extruded aluminum anchor bar securely terminates the IB PVC membrane, providing protection superior to any other manufactured or shopfabricated roof edge. The low profile roofing flange allows for water drainage as needed for drip edge conditions.

Product No	Size	Weight (lbs)
2-AT3	3"	6
2-AT4.5	4.5"	9
2-AT6	6"	12

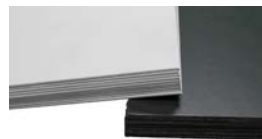
Features:

- 12' lengths with pre-punched holes for quicker installation.
- Covers available in 24 ga. steel and .040 aluminum
- Radiused and specially fabricated options available
- A 30 year Kynar 500® finish warranty is included on coil-coated standard colors.

Colors:



IB PVC Clad Metal 4x10 Sheet



Fabricated from 24 gauge galvanized sheet metal with a durable 45 mil non-reinforced IB PVC film with acrylic finish laminated to the top surface.

Product No	Type	Color
2-45CMF	Clad Metal	White
2-95SSF	SS Clad Metal	White
2-B45CMF	Clad Metal	Bronze
2-T45CMF	Clad Metal	Tan
2-G45CMF	Clad Metal	Gray

*MOQ 10 Sheet

Features:

- Durable 45 mil IB PVC non-reinforced film laminated to metal
- Acrylic finish top surface
- Easily fabricated into various profiles and flashings

Packaging:

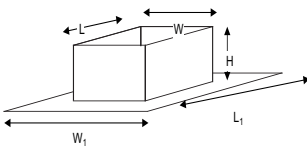
Sold as individual sheets 4x10
50 sheets / pallet
53 lbs / sheet

Colors:



CUSTOMS

CUSTOM POST FLASHING



Custom post flashing made from IB PVC.

To price this product, measure and add the **Length + Width + Height**. Total inches equals the size of small, medium, Large or Extra-Large.

Post Flashing 0-30" small

Product No	Size (inches)
C-PFSM / C-80PFSM	0-30

Post Flashing 31-42" medium

Product No	Size (inches)
C-PFMD / C-80PFMD	31-42

Post Flashing 43-50" large

Product No	Size (inches)
C-PFLG / C-80PFLG	43-50

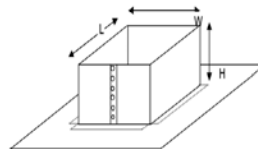
Post Flashing 51"+ x-large

Product No	Size (inches)
C-PFXL / C-80PFXL	51+

Colors:

White	Cool Sand	Cool Stone	Tan	Brown	Red	Green	Gray	Chemguard
-------	-----------	------------	-----	-------	-----	-------	------	-----------

CUSTOM IB PITCH PAN



Fabricated from IB PVC Clad Metal constructed with durable 45 mil non-reinforced IB PVC film laminated to 24 gauge, G90 coated galvanized sheet metal.

To price this product, measure and add the **Length+Width+Height** Total inches equals the size of small, medium, Large or Extra-Large.

Custom Pitch Pan 0-12" small

Product No	Size (inches)
C-PPSM	0-12

Custom Pitch Pan 13-16" medium

Product No	Size (inches)
C-PPMD	13-16

Custom Pitch Pan 17-20" large

Product No	Size (inches)
C-PPLG	17-20

Custom Pitch Pan 21-24" x-large

Product No	Size (inches)
C-PPXL	21-24

Custom Pitch Pan 25-28" xx-large

Product No	Size (inches)
C-PPXXL	25-28

Custom Pitch Pan 29-32" MG-small

Product No	Size (inches)
C-PPMGSM	29-32

Custom Pitch Pan 33-36" MG-medium

Product No	Size (inches)
C-PPMGMD	33-36

Custom Pitch Pan 37-40" MG-large

Product No	Size (inches)
C-PPMGLG	37-40

Custom Pitch Pan 41-44" MG-xlarge

Product No	Size (inches)
C-PPMGXL	41-44

Colors: Membrane

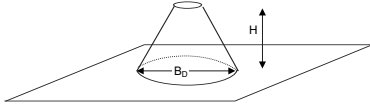
White	Cool Sand	Cool Stone	Tan	Brown	Red	Green	Gray	Chemguard
-------	-----------	------------	-----	-------	-----	-------	------	-----------

Colors: Metal

White	Gray	Tan	Bronze
-------	------	-----	--------

CUSTOMS

CUSTOM CONE FLASHINGS



Custom Pipe Cone made from IB PVC

To price this product, measure and add the **D2 + Height**. Total inches equals the size of small, medium, Large or Extra-Large.

Colors:



Custom Cones 0-15" small

Product No	Size (inches)
C-CSM / C-80CSM	0-15

Custom Cones 16-22" medium

Product No	Size (inches)
C-CM / C-80CM	16-22

Custom Cones 23-26" large

Product No	Size (inches)
C-CLG / C-80CLG	23-26

Custom Cones 27-29" x-large

Product No	Size (inches)
C-CXL / C-80CXL	27-29

Custom Cones 30-32" xx-large

Product No	Size (inches)
C-CXXL	30-32

Custom Cones 33-36" MG-small

Product No	Size (inches)
C-CMGSM	33-36"

Custom Cones 37-39" MG-medium

Product No	Size (inches)
C-CMGMD	37-39"

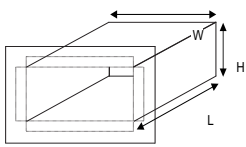
Custom Cones 40-44" MG-large

Product No	Size (inches)
C-CMGLG	40-44"

Custom Cones 45-47" MG-xlarge

Product No	Size (inches)
C-CMGXL	0-18

CUSTOM OVERFLOW SCUPPER



Custom overflow scupper made from IB PVC and metal

To price this product, measure and multiply the **Length + Width + Height**. Total inches equals the size of small, medium, Large or Extra-Large.

Colors:



Custom Overflow Scupper 0-20" small

Product No	Size (inches)
C-OFSSM / C-80OFSSM	0-20

Custom Overflow Scupper 21-25" medium

Product No	Size (inches)
C-OFSD / C-80OFSD	21-25

Custom Overflow Scupper 26-30" large

Product No	Size (inches)
C-OFSLG / C-80OFSLG	26-30

Custom Overflow Scupper 31-35" x-large

Product No	Size (inches)
C-OF5XL / C-80OF5XL	31-35

Custom Overflow Scupper 36-40" xx-large

Product No	Size (inches)
C-OF5XXL	36-40

Custom Overflow Scupper 41-45" MG-small

Product No	Size (inches)
C-OF5MGSM	41-45

Custom Overflow Scupper 46-50" MG-medium

Product No	Size (inches)
C-OF5MGMD	46-50

Custom Overflow Scupper 51-55" MG-large

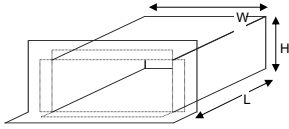
Product No	Size (inches)
C-OF5MGLG	51-55

Custom Overflow Scupper 56-60" MG-xlarge

Product No	Size (inches)
C-OF5MGXL	56-60

CUSTOMS

CUSTOM THROUGH WALL SCUPPER



Custom through wall scupper made from IB PVC and metal

To price this product, measure and multiply the **Length + Width + Height**. Total inches equals the size of small, medium, Large or Extra-Large.

Colors:



Custom Through Wall Scupper 0-20" small

Product No	Size (inches)
C-TWSSM / C-80TWSSM	0-20

Custom Through Wall Scupper 21-25" medium

Product No	Size (inches)
C-TWSMD / C-80TWSMD	21-25

Custom Through Wall Scupper 26-30" large

Product No	Size (inches)
C-TWSLG / C-80TWSLG	26-30

Custom Through Wall Scupper 31-35" x-large

Product No	Size (inches)
C-TWSXL / C-80TWSXL	31-35

Custom Through Wall Scupper 36-40" xx-large

Product No	Size (inches)
C-TWSXXL	0-20

Custom Through Wall Scupper 41-45" MG-small

Product No	Size (inches)
C-TWSMGSM	41-45

Custom Through Wall Scupper 46-50" MG-medium

Product No	Size (inches)
C-TWSMGMD	46-50

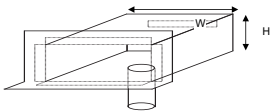
Custom Through Wall Scupper 51-55" MG-large

Product No	Size (inches)
C-TWSMGLG	31-35

Custom Through Wall Scupper 56-60" MG-xlarge

Product No	Size (inches)
C-TWSMGXL	56-60

CUSTOM 2 SIDED THROUGH WALL SCUPPER W/CLAD DROP



Custom through wall scupper made from IB PVC and metal

To price this product, measure and multiply the **Length + Width + Height**. Total inches equals the size of small, medium, Large or Extra-Large.

Colors:



Custom 2 Sided Through Wall Scupper w/Clad Drop 0-20" small

Product No	Size (inches)
C-TWSDSM	0-20

Custom 2 Sided Through Wall Scupper w/Clad Drop 21-25" medium

Product No	Size (inches)
C-TWSDMD	21-25

Custom 2 Sided Through Wall Scupper w/Clad Drop 26-30" large

Product No	Size (inches)
C-TWSDLG	26-30

Custom 2 Sided Through Wall Scupper w/Clad Drop 31-35" x-large

Product No	Size (inches)
C-TWSDXL	31-35

Custom 2 Sided Through Wall Scupper w/ Clad Drop 36-40" xx-large

Product No	Size (inches)
C-TWSDXXL	36-40

Custom 2 Sided Through Wall Scupper w/Clad Drop 41-45" MG-small

Product No	Size (inches)
C-TWSDMGSM	41-45

Custom 2 Sided Through Wall Scupper w/Clad Drop 46-50" MG-medium

Product No	Size (inches)
C-TWSDMGMD	46-50

Custom 2 Sided Through Wall Scupper w/Clad Drop 51-55" MG-large

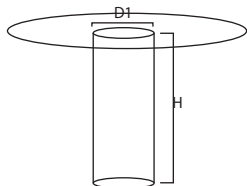
Product No	Size (inches)
C-TWSDMGLG	51-55

Custom 2 Sided Through Wall Scupper w/Clad Drop 56-60" MG-xlarge

Product No	Size (inches)
C-TWSDMGXL	51-55

CUSTOMS

CUSTOM DRAIN LINER



Custom Drain Liner made from IB PVC

To price this product, measure and add the **D1 + Height**. Total inches equals the size of small, medium, Large or Extra-Large.

Colors:



Custom Drain Liner 0-12" small

Product No	Size (inches)
C-DLSM / C-80DLSM	0-12

Custom Drain Liner 15-16" large

Product No	Size (inches)
C-DLLG	15-16

Custom Drain Liner 13-14" medium

Product No	Size (inches)
C-DLMD	13-14

Custom Drain Liner 17-18" x-large

Product No	Size (inches)
C-DLXL	17-18

CUSTOM METALS

DRIP EDGE



A - Flange
B - Face
C - Hem

*Indicate Kick-out/Kick-in

Fabricated from 24 gauge, G90 galvanized sheet metal with a durable 45 mil non-reinforced IB PVC film with acrylic finish laminated to the top surface.

To price this product, measure the total number of inches as if it was flat (Stretch out) A+B+C. Multiply the price of the metal by the inch. Add \$2 per bend in the metal for the total price per piece.

Stretch out X price per inch + number of bends + \$5.00 custom fee

Price Example: (price per inch x amount of inches) + (\$2 x per bend) + \$5 custom fee

A=3" B=3" + C = 1" = total 7"

\$2.27 x 7 inches = \$15.89 + \$2.00 x 3 bends = \$6.00

Total price \$15.89 + \$6.00 = \$21.89 + \$5 custom fee = \$26.89

Custom PVC Clad Metal

Product No	Color:
C-MW	White

Custom PVC Clad Stainless Metal

Product No	Color:
C-MSS	White

Custom PVC Clad Metal Color

Product No	Colors:
C-MC	Tan Gray Bronze

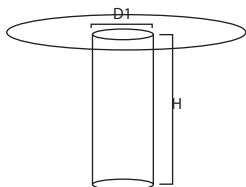
Custom Cleat Metal

Product No
C-GALCLEAT

Custom Cleat Stainless Metal

Product No
C-SSCLEAT

CUSTOM CLAD METAL DROP SCUPPER ROUND



Custom Clad Metal Drop Scupper Round with a metal drop base and membrane skirt.

To price this product, measure **D1**. Total inches equals the size of small, medium, or large.

Colors:



Custom Clad Metal Drop Scubber Round 0-4" small

Product No	Size (inches)
C-CDSRSM	0-12

Custom Clad Metal Drop Scubber Round 5-7" medium

Product No	Size (inches)
C-CDSRMD	5-7

Custom Clad Metal Drop Scubber Round 8-10" large

Product No	Size (inches)
C-CDSRLG	8-10

Minimum for custom colors:

Acrylics 220 gallons • Silicone 330 gallons • The special color minimum fee is \$3.00/gallon.

COATING

IB Acrylic HT



A premium performance, plasticizer free, single component, water-based, 100% acrylic, elastomeric coating that is designed to help reduce surface temperatures thereby minimizing thermal expansion and contraction while providing exceptional resistance to UV degradation and long lasting and preventative solutions for the renewal and maintenance of many roof types. Meets or exceeds ASTM D-6083.

Item Code	Description / Color	Size	Weight	Pallet
9-AHTG	IB Acrylic HT Gray	5-gal	56.5 lbs	36
9-AHTT	IB Acrylic HT Tan	5-gal	56.5 lbs	36
9-AHTW	IB Acrylic HT White	5-gal	56.5 lbs	36
9-ATHG55	IB Acrylic HT Gray	55-gal	650.5 lbs	4
9-ATHT55	IB Acrylic HT Tan	55-gal	650.5 lbs	4
9-ATHW55	IB Acrylic HT White	55-gal	650.5 lbs	4
9-ATHG275	IB Acrylic HT Gray	275-gal	3172.5 lbs	1
9-ATHT275	IB Acrylic HT Tan	275-gal	3172.5 lbs	1
9-ATHW275	IB Acrylic HT White	275-gal	3172.5 lbs	1

Features:

- Plasticizer free
- 55% solids by volume
- Excellent adhesion to a variety of substrates
- Special biocide formulation helps retard discoloration and dirt retention
- Unique formulation allows breathable film while providing a watertight membrane and permitting trapped moisture to escape
- Low VOC, less than 50 grams/liter

Colors:



SILICONE COATING

IB Silicone



Is a high performance, high solids, single component, moisture cure fluid applied silicone elastomeric coating that is designed to help reduce surface temperatures thereby minimizing thermal expansion and contraction while providing exceptional resistance to UV degradation and long lasting and preventative solutions for the renewal and maintenance of many roof types. Meets or exceeds ASTM D-6694

Item Code	Description / Color	Size	Weight	Pallet
9-SCG	IB Silicone Coating Gray	5-gal	56.5 lbs	36
9-SCT	IB Silicone Coating Tan	5-gal	56.5 lbs	36
9-SCW	IB Silicone Coating White	5-gal	56.5 lbs	36
9-SCG55	IB Silicone Coating Gray	55-gal	650.5 lbs	4
9-SCT55	B Silicone Coating Tan	55-gal	650.5 lbs	4
9-SCW55	B Silicone Coating White	55-gal	650.5 lbs	4

Features:

- Ponding water resistant
- 90% solids by volume
- Excellent adhesion to a variety of substrates
- Excellent sag resistance
- No mixing required (up to 6 months)
- Unique formulation allows breathable film while providing a watertight membrane and permitting trapped moisture to escape
- Low VOC, less than 50 grams/liter

Colors:



IB Acrylic Pro



Is a high performance, plasticizer free, single component, water-based, 100% acrylic, elastomeric coating that is designed to help reduce surface temperatures thereby minimizing thermal expansion and contraction while providing exceptional resistance to UV degradation and long lasting and preventative solutions for the renewal and maintenance of many roof types. Meets or exceeds ASTM D-6083.

Item Code	Description / Color	Size	Weight	Pallet
9-APG	IB Acrylic Pro Gray	5-gal	61.5 lbs	36
9-APT	IB Acrylic Pro Tan	5-gal	61.5 lbs	36
9-APW	IB Acrylic Pro White	5-gal	61.5 lbs	36
9-APG55	IB Acrylic Pro Gray	55-gal	705.5 lbs	4
9-APT55	IB Acrylic Pro Tan	55-gal	705.5 lbs	4
9-APW55	IB Acrylic Pro White	55-gal	705.5 lbs	4
9-APG275	IB Acrylic Pro Gray	275-gal	3447.5 lbs	1
9-APT275	IB Acrylic Pro Tan	275-gal	3447.5 lbs	1
9-APW275	IB Acrylic Pro White	275-gal	3172.5 lbs	1

Features:

- Plasticizer free
- 53% solids by volume
- Excellent adhesion to a variety of substrates
- Special biocide formulation helps retard discoloration and dirt retention
- Unique formulation allows breathable film while providing a watertight membrane and permitting trapped moisture to escape
- Low VOC, less than 50 grams/liter

Colors:



IB Silicone FG



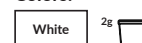
Is a performance, moisture curing, 100% silicone, flashing grade mastic that is designed to seal all seams and fasteners on roofs in conjunction with IB Silicone systems.

Item Code	Description / Color	Size	Weight	Pallet
9-SCFGW2	IB Silicone FG Coating White	2-gal	22.0 lbs	60
9-SCFGW	IB Silicone FG Coating White	5-gal	56.5 lbs	36
9-SCFGW50	IB Silicone FG Coating White	55-gal	650.5 lbs	4

Features:

- Plasticizer free
- 90% solids by volume
- Brush-able/trowel-able
- Excellent adhesion to a variety of substrates
- Unique formulation allows breathable film while providing a watertight membrane and permitting trapped moisture to escape
- In most cases, eliminates need for 3 course application of fabric reinforcement of seams and flashings.
- Low VOC compliant, less than 50 grams/liter

Colors:



COATING

IB Bleed Block



Is a high performance, plasticizer free, single component, water-based, acrylic elastomeric base coating that is designed as a base coat over a variety of substrates to help reduce asphaltic bleed through and discoloration of the finish coat.

Item Code	Description / Color	Size	Weight lbs	Pallet
9-BBG	IB Bleed Block Gray	5-gal	60.5 lbs	36
9-BBG55	IB Bleed Block Gray	55-gal	694.5 lbs	4
9-BBG275	IB Bleed Block Gray	275-gal	3392.5 lbs	1

Features:

- Plasticizer free
- 55% solids by volume
- Excellent adhesion to a variety of substrates
- Special bleed resistant formulation helps retard asphaltic bleed through and discoloration of finish coats
- Unique formulation allows breathable film while providing a watertight membrane and permitting trapped moisture to escape
- Low VOC, less than 50 grams/liter

Colors:



IB Bleed Block SS



Is a high performance, plasticizer free, single component, water-based, acrylic elastomeric base coating that is designed as a base coat over a variety of substrates to help reduce asphaltic bleed through and discoloration of the finish coat.

Item Code	Description / Color	Size	Weight	Pallet
9-BBSS	IB Bleed Block SS Ivory	5-gal	60.5 lbs	36
9-BBSS55	IB Bleed Block SS Ivory	55-gal	694.5 lbs	4
9-BBSS275	IB Bleed Block SS Ivory	275-gal	3392.5 lbs	1

Features:

- Plasticizer free
- Excellent adhesion to a variety of substrates
- Special bleed resistant formulation helps retard asphaltic bleed through and discoloration of finish coats
- Unique formulation allows breathable film while providing a watertight membrane and permitting trapped moisture to escape
- Low VOC, less than 50 grams/liter

Colors:



PRIMER

IB TP Primer



Is a high performance, plasticizer free, single component, water-based, acrylic primer that is designed as a primer over thermoplastic membranes to help reduce plasticizer migration and enhance the adhesion of the finish coat.

Item Code	Description / Color	Size	Weight lbs	Pallet
9-TP	IB TP Primer Clear	5-gal	45 lbs	36
9-TP55	IB TP Primer Clear	55-gal	534 lbs	4
9-TP275	IB TP Primer Clear	275-gal	2540 lbs	1

Features:

- Plasticizer free
- 45% solids by volume
- Specially formulated to block thermoplastic plasticizer migration that causes discoloration and failure of coatings
- Excellent bond enhancing properties
- Unique formulation allows breathable film while providing a watertight membrane and permitting trapped moisture to escape
- Low VOC, less than 50 grams/liter

Colors:



IB Rust Primer



Is a high performance, water-based, rust inhibiting low VOC primer that is designed as a primer coat over a variety of metal substrates to help reduce the corrosion process and enhance the bonding of the IB finish coat.

Item Code	Description / Color	Size	Weight	Pallet
9-RP	IB Rust Primer Dark Red	5-gal	51 lbs	36
9-RP55	IB Rust Primer Dark Red	55-gal	590 lbs	4

Features:

- Water Based
- Special cross linking formulation for greater corrosion resistance and bond enhancing properties
- 41% solids by volume
- Excellent adhesion to a variety of substrates
- Resists heat, cold, moisture and weathering
- Low VOC, less than 50 grams/liter

Colors:



SEALER

IB Sealer



Is a high performance, plasticizer free, single component, 100% solids moisture-curing and self-leveling sealant/adhesive that is designed to seal all seams, fasteners, ridge caps, flashings, and penetrations on all types of roof substrates in conjunction with IB Acrylic or IB Silicone coatings.

Item Code	Description / Color	Size	Weight	Pallet
9-SEALW10	IB Seal White	10 fl. oz. tube	26 lbs/case	30/case; 60 cases pallet
9-SEALG10	IB Seal Gray	10 fl. oz. tube	26 lbs/case	30/case; 60 cases pallet
9-SEALW	IB Seal White	28 fl. oz. tube	29 lbs/case	12/case; 60 cases pallet
9-SEALG	IB Seal Gray	28 fl. oz. tube	29 lbs/case	12/case; 60 cases pallet
9-SEALW2	IB Seal White	2-gal	22.5 lbs	60
9-SEALG2	IB Seal Gray	2-gal	22.5 lbs	60

Features:

- Plasticizer free
- 100% solids
- Low odor formulation
- Excellent adhesion, highly elastic, and high strength
- Bonds to damp surfaces and is an excellent emergency repair product
- In most cases, eliminates need for 3 course application of fabric reinforcement of seams and flashings.
- Can be applied to most surfaces without priming
- Non staining and mildew resistant
- UV resistant
- Low VOC compliant

Colors:



IB Skylight Glaze



Is a high quality, 100% acrylic UV resistant coating intended for glazing fiberglass roof panels and translucent skylights.

Item Code	Description / Color	Size	Weight	Pallet
9-SKYG	IB Skylight Glaze	5-gal	54.5 lbs	36
9-SKYG	IB Skylight Glaze	55-gal	628.5 lbs	4

Features:

- Plasticizer free
- 100% acrylic UV resistant technology
- Rapid drying formulation
- Excellent resistance to dirt retention, chalking and weathering
- Low VOC

Colors:



IB Acrylic FG



Is a high quality, plasticizer free, single component, 100% acrylic flashing grade elastomeric coating that is designed to seal all seams and fasteners on metal roofs.

Item Code	Description / Color	Size	Weight	Pallet
9-AFGG2	IB Acrylic FG Gray	2-gal	22.5 lbs	60
9-AFGG	IB Acrylic FG Gray	5-gal	56.5 lbs	36
9-AFGG55	IB Acrylic FG Gray	55-gal	728 lbs	4
9-AFGW2	IB Acrylic FG White	2-gal	22.5 lbs	60
9-AFGW	IB Acrylic FG White	5-gal	56.5 lbs	36
9-AFGW55	IB Acrylic FG White	55-gal	728 lbs	4

Features:

- Plasticizer free
- 55% solids by volume
- Brush-able
- Excellent adhesion to a variety of substrates
- Unique formulation allows breathable film while providing a watertight membrane and permitting trapped moisture to escape
- In most cases, eliminates need for 3 course application of fabric reinforcement of seams and flashings.
- Low VOC compliant, less than 50 grams/liter



IB Concrete Sealer



Is a high quality, rapid-drying, water-based primer intended for sealing concrete and masonry surfaces.

Item Code	Description / Color	Size	Weight	Pallet
9-CS	IB Concrete Sealer Clear	5-gal	44 lbs	36
9-CS55	IB Concrete Sealer Clear	55-gal	513 lbs	4

Features:

- Easy to apply
- No mixing
- Rapid drying formulation
- Excellent resistance to dirt retention, chalking and weathering
- Low VOC

Colors:



CLEANER

IB EPDM Cleaner



Is a high performance, plasticizer free, single component, water-based, wash primer to remove the dirt and residues on the EPDM rubber membrane in preparation to receive an IB Coating.

Item Code	Description / Color	Size	Weight	Pallet
9-EPDMC	IB EPDM Cleaner Clear	5-gal	43 lbs	36
9-EPDMC55	IB EPDM Cleaner Clear	55-gal	502 lbs	4

Features:

- Plasticizer free
- 64% solids by volume
- Excellent bond enhancement adhesion to aged EPDM surfaces
- Zero VOC

Colors:



FABRIC

IB Fabric



Is a high quality, stitch bond polyester reinforcing fabric used in conjunction with IB Sealer and/or IB Coatings.

Item Code	Description / Color	Size	Weight	Pallet
9-FABR4	IB Fabric-4" White	4" x 324'	3	100
9-FABR6	IB Fabric-6" White	6" x 324'	4	42
9-FABR12	IB Fabric-12" White	12" x 324'	8	25
9-FABR40	IB Fabric-40" White	40" x 324'	35	25

Features:

- 3 oz./sq. yd. stitch bond polyester
- Medium soft which lays flat and conforms to surfaces easily
- Combines high strength and excellent elongation

Colors:



IB Roof Cleaner Concentrate



Is a high performance, biodegradable, environmentally friendly cleaner that is formulated to remove heavy soils and contaminants in preparation of roofs prior to the application of roof coatings.

Item Code	Description / Color	Size	Weight	Pallet
9-RCC	IB Roof Cleaner Concentrate	5-gal	42.5 lbs	36
9-RCC55	IB Roof Cleaner Concentrate	55-gal	496.5 lbs	4

Features:

- Plasticizer free
- Biodegradable and environmentally friendly formulation
- All surfactants are approved on cleaningredients.org
- Zero VOC
- Low foaming formulation
- Excellent cleaning ability – removes paints and adhesives when used at full strength

Colors:



TOOLS

isoweld® Tool with 6 Magnets



New, revolutionary SFS Intec isoweld® field fastening system is an innovative induction welding system which welds prefasted PVC coated securement plates to IB PVC Single Ply membranes.

Product No	Type
8-ISOWELD	welding system
<i>*Special Order</i>	

Weight (lbs)
45

Features:

- 1-step calibration
- Hand-held inductor
- Constant monitoring of membrane surface temperature
- "x2" welding - two membrane thickness
- 3-way weld verification
- Plate-finding search function
- No "false positive" welds

isoweld® Backpack Tool with 6 Magnets



A power generator that is interchangeable with the isoweld® 3000 stand-up tool frame, replaceable closed cell foam shoulder straps with integral waist strap, and the original low profile hand-held inductor for detail work which converts to stand-up mode for ultimate productivity.

Product No	Type
8-ISOPACK	backpack welding system
<i>*Special Order</i>	

Weight (lbs)
25

Features:

- Fastening is independent of membrane laps.
- Only one membrane width is required for the whole project
- No membrane penetration
- Reduced membrane overlaps
- Covering of the roof is independent of the fastening process and is therefore faster
- Fewer fastening points

Leister V2 Varimat Auto Welder w/Case



Roofing membranes can be welded faster, resulting in lower costs. Users appreciate its streamlined ergonomics and its ease of use. The operating unit's digital display allows for the control of temperature, airflow and speed.

Product No	Type
8-AMV2	V2 Automatic Welder
<i>*Special Order</i>	

Weight (lbs)
135

Features:

- Slim-line design for welding in gaps as narrow as 4.3 inches
- Maintenance-free blower, no carbon brushes to replace
- User-friendly digital display that includes preset and configurable welding profiles for heat, speed and air volume
- Closed-loop system for continuous temperature monitoring
- Patented pendulum pressure roller applies pressure to the heated seam
- Drive motor strong enough to weld up to 30° slopes

Leister 300 120V Uniroof AT w/Case



Flexible partner for welding thermoplastic roofing membranes on flat or pitched roofs (up to 30°). Thanks to its slim design and construction, as well as the movable transport axle, converting of the machine is no longer needed. Now, you can effortlessly weld close to the edge (4 inches) at the parapet or on the parapet and as easily in narrow circumstances.

Product No	Type	Weight (lbs)
8-UNIE120V	Uniroof AT Welder	58
<i>*Special Order</i>		

Features:

- Controlled technology with display guarantees a constant and reliable weld for a leak proof roof
- 100% Swiss made quality
- Powder-coated, rust-free stainless steel housing and rustproof components
- Lightweight and compact

Leister 300 230V Uniroof AT w/Case



Flexible partner for welding thermoplastic roofing membranes on flat or pitched roofs (up to 30°). Thanks to its slim design and construction, as well as the movable transport axle, converting of the machine is no longer needed. Now, you can effortlessly weld close to the edge (4 inches) at the parapet or on the parapet and as easily in narrow circumstances.

Product No	Type	Weight (lbs)
8-UNIE	Uniroof AT Welder	58
<i>*Special Order</i>		

Features:

- Controlled technology with display guarantees a constant and reliable weld for a leak proof roof
- 100% Swiss made quality
- Powder-coated, rust-free stainless steel housing and rustproof components
- Lightweight and compact

Winco 12K Generator



The 15 gallon fuel tank provides 9 hours of run time at full load so you won't have to take unscheduled breaks to refuel. The factory installed lifting bar makes it easy to get this generator on and off the roof while the four wheel dolly kit makes maneuvering this generator easy. It is durable enough to handle the hours while providing clean power for sensitive equipment.

Product No	Weight (lbs)
8-WG1200HE	429
<i>*Special Order</i>	

TOOLS

Leister 110v Hand Welder ST



Primarily used for welding and plastic fabrication. This tool was developed with one idea always in mind: keep it simple. The TRIAC ST is a dependable, versatile, and user friendly hot air hand tool like its predecessor, the TRIAC S.

Product No	Type	Weight (lbs)
8-HWST	Triac ST Hand Welder	6.2

Leister Hand Welder Nozzle 20mm



3/4" (20mm) slot nozzle by Leister® can be used in combination with the Triac S

Product No	Weight (lbs)
8-HWN20	0.2

Leister Hand Welder Nozzle 40mm



1.5" (40mm) slot nozzle by Leister® can be used in combination with the Triac S, Triac ST and Triac AT.

Product No	Weight (lbs)
8-HWN	0.2

Leister 220V Varimat Cord



220v 100' Extension cord for Leister power products

Product No	Weight (lbs)
8-AS-EXT	25

*Special Order

IB Hand Welder Kit



IB hand welder kit includes all of the items listed here. If you want individual items, use the individual product number.

Product No	Type	Weight (lbs)
8-WK	Hand Welder Kit	12

INCLUDES

8-HWST	Leister 110V Hand Welder
8-HWN	40mm Nozzle
8-SHR	2" Seam Roller
8-SP	Seam Probe
8-MS	Membrane Sheers
8-TOOL BAG	Hand Welder Bag

Hand Welder Element 120V 1600W-S



120V 1600W Replacement Heating Element. High temperature resistance alumina ceramic heating element use for handheld hot air tools.

1550W ST for newer ST model hand welders
1600W-S for older S model hand welders

Product No	Weight (lbs)
8-HWE	0.3

Voltage: 120 V	Power: 1600 W	Type: 33
Diameter 26mm	Weight: 0.1 kg	Package: 1pcs

Hand Welder Element 120V 1550W-ST



120V 1550W Replacement Heating Element. High temperature resistance alumina ceramic heating element use for hand held hot air tools.

1550W ST for newer ST model hand welders
1600W-S for older S model hand welders

Product No	Weight (lbs)
8-HWSE	0.3

Voltage: 120 V	Power: 1550 W	Type: 33
Diameter 26mm	Weight: 0.1 kg	Package: 1pcs

TOOLS

IB Battery Powered Millennium Applicator



Used to tighten IB Retrofit Drain. Battery Powered Single Bead Applicator for 1.5 L cartridge sets. Includes 2 rechargeable Li ion batteries and battery charger

Note: Battery has shipping restrictions
New weight (22 LB gross weight)

Product No | **Type**
8-EQ7075 | Powered Applicator
***Special Order**

Features:

- Battery powered
- Quick and easy use
- Trigger delay
- Durable construction
- Strong motor
- Portable, no cords or hoses
- Saves time and labor
- Saves battery charge
- Withstands everyday use
- Can dispense higher viscosity adhesives

IB Manual Millennium Heavy Duty Applicator



IB Millennium One Step™ Heavy Duty (Black) Manual Applicators are designed to be used with Millennium One Step™ Foamable Adhesives. They are powered by manually squeezing the trigger on the handle of the applicator which drives the piston rods.

Product No | **Type**
8-HDAPP | Manual Applicator

Features:

- Center drive design
- Lightweight and easy to use
- Produces 900 pounds of thrust
- Recommended for smaller jobs or congested areas

POLYSET PVC SPRAY CONTACT ADHESIVE TOOLS

Spray Gun (vertical wall) 9501 spray tip attached



Used to spray on Polyset PVC Adhesive on vertical walls.

Product No | **Type**
7-GUNV | Adjustable Spray Gun (with Spray Tip)

Brass Spray Tip 9501



Brass tip used on the vertical wall spray gun

Product No | **Type**
7-BTIP | Brass Spray Tip

Field spray gun with 18" extender wand with 9501 spray tip attached

Used to spray on Polyset PVC Adhesive on vertical walls.

Product No | **Type**
7-GUNF | Adjustable Spray Gun - 18" Wand (with Spray Tip)

White Rubber Hose with valve 12' (pvc adhesive only)



Used to spray on Polyset PVC Adhesive on vertical walls. Reusable if cleaned with aerosol cleaner

Product No | **Type**
7-RUBH | 12' White Rubber Hose

Ps1 (polysolv) 11.5 Oz Aerosol Cleaner



Polyurethane Cleaner PS1 is a cleaning solvent used to dissolve uncured polyurethane adhesive.

***Sold by the case of 12**

Product No | **Type**
7-POLYSOLV | PolySolv 11.5 oz Multi-Purpose Cleaner

TOOLS

IB Bag of Rags



Product No
8-RAGS10

100% cotton loops with a 86% Cotton 14% Polyester base. A blended base with 100% cotton loops is the best of the best. You get absorbency plus durability. Irregular. Bright white and soft.

IB Hand Welder Bag Only



Product No | Type
8-TOOLBAG | Husky Backpack

Heavy Duty tool bag with reinforced bottom for rooftop protection.

HQ Membrane Shears



Product No
8-MSHQ

Heavy Duty all metal manufactured specifically for commercial roofers. Hot drop forged from chrome-moly steel. Precision machined and hardened. Chrome finish resists corrosion. Adjustable screw.

IB Retrofit Drain Screwdriver



Product No
8-RFDS

The extra long screwdriver has a square socket tip (#2 Robertson) for tightening the recess head screws on the compression seal. The 12 1/2" shaft of the screwdriver allows for ease of reach when tightening the Seal connection screws on all retrofit products. The screwdriver comes complete with a loss prevention bar.

HQ Seam Probe hardened tip and screw handle



Product No
8-SPHQ

Test seams to make sure they hold properly. Locate loose portions of seams for rework. Hand-held seam testers good for detail work in small areas. Fits a broom handle for standing testing and tempered to not wear down.

Membrane Slitter



Product No
8-MSLTR

Hand held roofing membrane slitter tool for PVC membranes. Plastic Body with Large Gripper Handle. Replaceable Blades.

2" Silicon Leister Hand Roller Enclosed No Rust Bearing



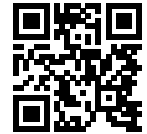
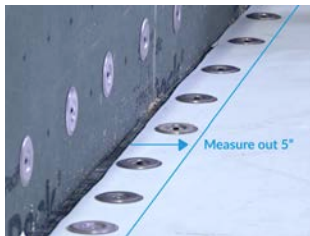
Product No
8-SHRHQ

Silicone roofing roller that is Made in the USA. Perfect for any type of seam pressure rolling. High quality, heavy fork doesn't bend or twist from pressure anti-rust ball bearings for long lasting tool and smooth rolling 1-7/16" dia X 1-3/4" wide silicone roller

IB PRODUCT INSTALL VIDEOS

Come and Learn.

Want to learn how to install IB products? Visit our easy step by step product installation videos, which will help guide you on your next project.



Scan here to visit
IB Product
Install Videos.

IB SAMPLES/LITERATURE

Come and get it!

IB has spent extensive time and energy to have awesome samples and literature so you can better use for your client packages and proposals. The IB website www.IBroofGear.com has all of the materials you need to represent well in your market



Scan here to visit
the website

Items for your use:

- Product samples
- Brochures
- Technical Information
- Tools
- Wearables and Branded Gear

Membrane Sample Color Book



IB Roof Systems color swatch PVC membrane samples have all 8 colors available of in-stock colors – no other manufacturer has this many available and ready to ship today! These samples are 4.25" x 6.25" and have general technical data information available on the covers. Please download individual spec sheets for complete details.

4.25" x 6.25" Sample Booklet
White, Cool Stone, Cool Sand, Tan, Brown, Red, Green, Gray

Technical Data Sheet Downloads:

- IB PVC Single-Ply 50
- IB PVC Single-Ply 60
- IB PVC Single-Ply 80

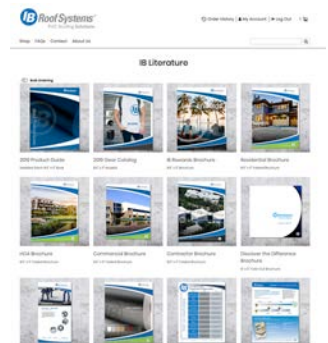
Order Sample(s):

Quantity:

W Add to Cart

Unit Price: \$0.00 each
Item Total: \$0.00

Quantity	Price
1	\$0.00 each



BRANDED GEAR

Looking Good!

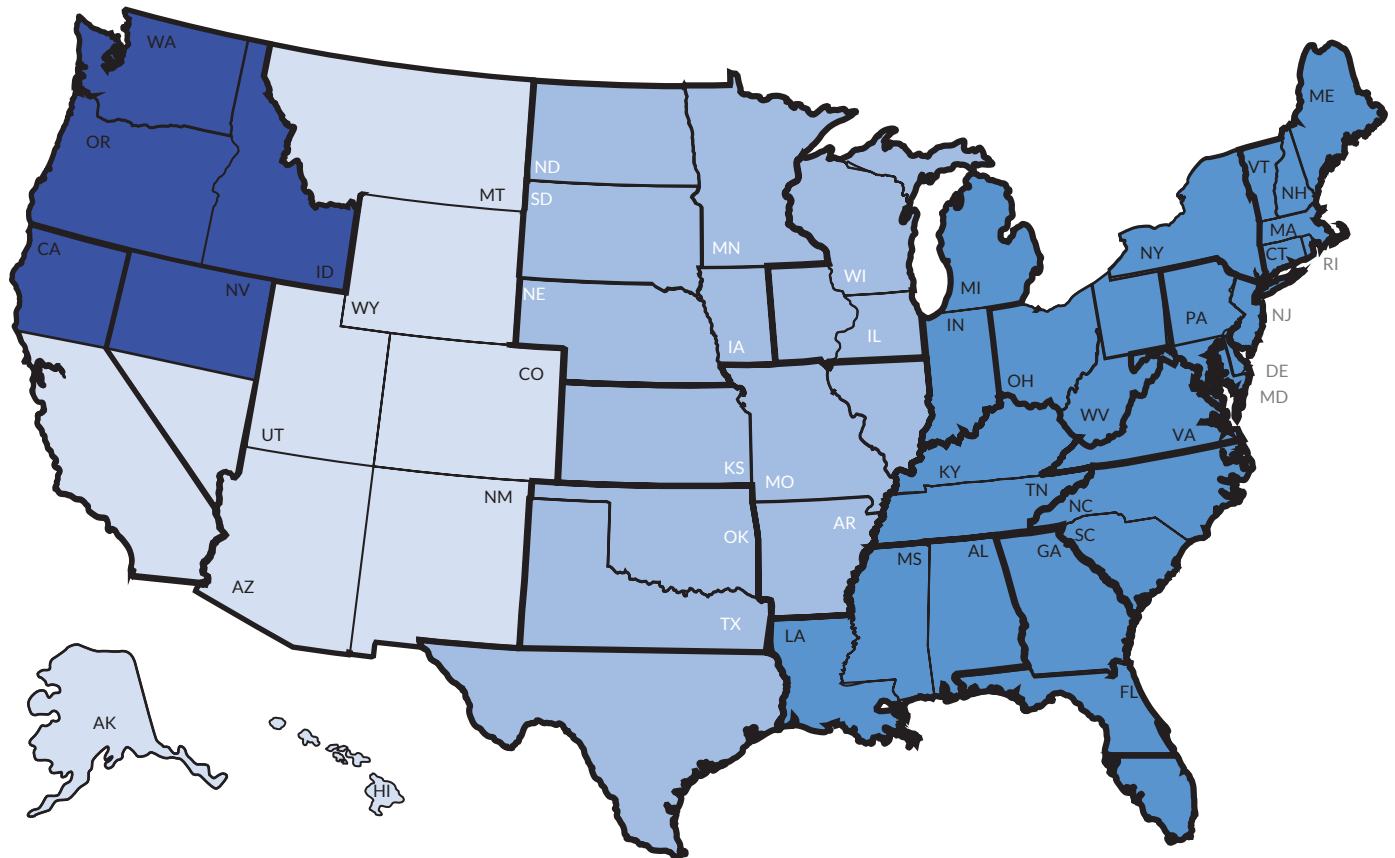
Get the latest IB Gear so you can put your best foot forward when promoting IB. Select from a range of IB Jackets, Polo Shirts, T-shirts, Hats, Flashlights, and more.



Scan here to visit
the gear website

Orders

IB Inside Sales Representatives are available from 7am to 7pm. Our Inside Sales Representatives are here to ensure consistent and quality coordination of your orders, as well as review and become familiar with your individual product and shipping needs. If you have special requirements for orders and deliveries - let us know, we will get it handled! We want your orders right and on-time!



NORTHWEST	SOUTHWEST	CENTRAL	EAST
Orders.NW@IBroof.com	Orders.SW@IBroof.com	Orders.CT@IBroof.com	Orders.ET@IBroof.com
Direct Line: 972.354.6635	Direct Line: 972-354-6637	Direct Line: 972.354.6622	Direct Line: 972.354.6629
Toll Free: 800.426.1626	Toll Free: 800.426.1626	Toll Free: 800.426.1626	Toll Free: 800.426.1626
Text Only Line 214.531.9100	Text Only Line 469.836.6929	Text Only Line 214.490.2292	Text Only Line 469.836.6938

Chad Paris - Sales Director
 Chad.Paris@IBroof.com

Derrick White - Inside Sales Manager
 Derrick.White@IBroof.com

Robyn White- Logistics Manager
 Robyn.White@IBroof.com

Cell: 334.320.0174
 Toll Free: 800.426.1626

Direct Line: 972.354.6622
 Toll Free: 800.426.1626

Text Only Line
 214.490.2292

Direct Line: 469.401.1594
 Toll Free: 800.426.1626

Return Policy

1. Please contact IB Roof Systems' customer service department to discuss any returns prior to returning products to IB Roof Systems. This will ensure you receive IB's discounted shipping rates on the return.
2. IB Roof Systems does not accept returns on product delivered over 90 days.
3. Prior to a credit being issued, all products will be inspected by the IB Roof Systems' Quality Assurance Manager, or an inspector. This may affect credit issued.
4. Product is credited to the billing account only. No refund checks will be issued. Third party accounts will not be credited.

Restock / Freight Fees

1. In situations where the wrong product was ordered, the wrong quantity was ordered or project changes, the customer will be responsible for:
 - a. Freight Out (If IB Roof Systems Paid)
 - b. Return Freight
 - c. Restocking fee of 20% - 30%
2. The customer, upon receiving an approval, is responsible for arranging prepaid freight to Eugene, OR or Dallas, TX. We would request 24 hours notice before delivery.

Special Orders

1. Products such as scupper, special flashing, special metal, insulation adhesive, and special run items are considered "special orders". There are no returns on "special orders."

IB Roof Systems Responsibility

1. IB Roof Systems will accept returns and responsibility on any product due to an:
 - a. Error in Order Entry
 - b. Error in Order Processing
 - c. Order released before ship date
 - d. Product arrived damaged
2. When IB Roof Systems is paying freight on a return we will arrange for trucking.
3. There will be no return on the following products:
 - a. Special order cones, scupper and Metal
 - b. Insulation
 - c. Adhesive, caulk, and coatings (due to short shelf life)
 - d. Taper system
 - e. Cricket systems
4. Any re-stocking fee can be between 20% - 30% depending on material condition. All ISO, EPS, and coverboard is 30% restocking fee to IB and manufacturers.

2022 FREIGHT POLICY

Fulfillment Expectation

IB Roof Systems has been ambitious to build a network where your order can ship the same day or next from the regional IB distribution center closest to you or your project. IB has multiple shipping options that include truckload orders to small package.

Expectations of Customer freight charges

(Prices range by delivery distance and weight)

- Small Parcel (UPS) – charged at cost
- LTL (IB's Carrier) charges are broken down by weight range
 - Under 200 lbs. \$250 Flat
 - 200 – 4,000 lbs. \$0.35/LB
 - 4,000 + lbs. \$0.20/LB
- LTL Shipments are subject to a flat \$50 freight/fuel surcharge
- LTL (Customer Specific Carrier)
 - Quote & charge
- Accessorial: LTL Shipments requiring additional equipment or services are subject to the added fees below
 - Overlength (Pieces over 8'): \$250
 - Redeliver Fee *case by case
 - Storage Fee *case by case
 - Multiple stop fee \$100 pick-up/drop-off location

* LTL 10:30 AM Guarantee is limited and not available in all locations. This Guarantee cannot be combined with a request for a lift gate and or a pallet jack.

- Deficit freight Empty Truck \$1250, 3/4 truck \$937, 1/2 deficit \$625, 1/4 full \$312

Orders that Qualify for Free Freight

IB will pay the most economical freight method utilizing LTL, Hot Shots and Dry Van (enclosed semi-trailer, etc.) for any order in Continental United States with either of the following:
 Note specific truck (Flatbed, Dry Van, Hot Shot) & additional equipment requirements may incur additional freight costs if not most economical

- 300 squares or above
- 4 Pallets of Membrane (full rolls or half rolls) in 1 color membrane from 1 location
- 4 Pallets of Coatings
- Combination of Membrane and Coating to equal 4 Pallets
- Accessories do not qualify for Pallet count
- Freight and Fuel Surcharge of \$400 on every dedicated truck

Please note there will be a \$50 pallet surcharge for additional pallets required to break orders into separate orders less than pallet quantities.

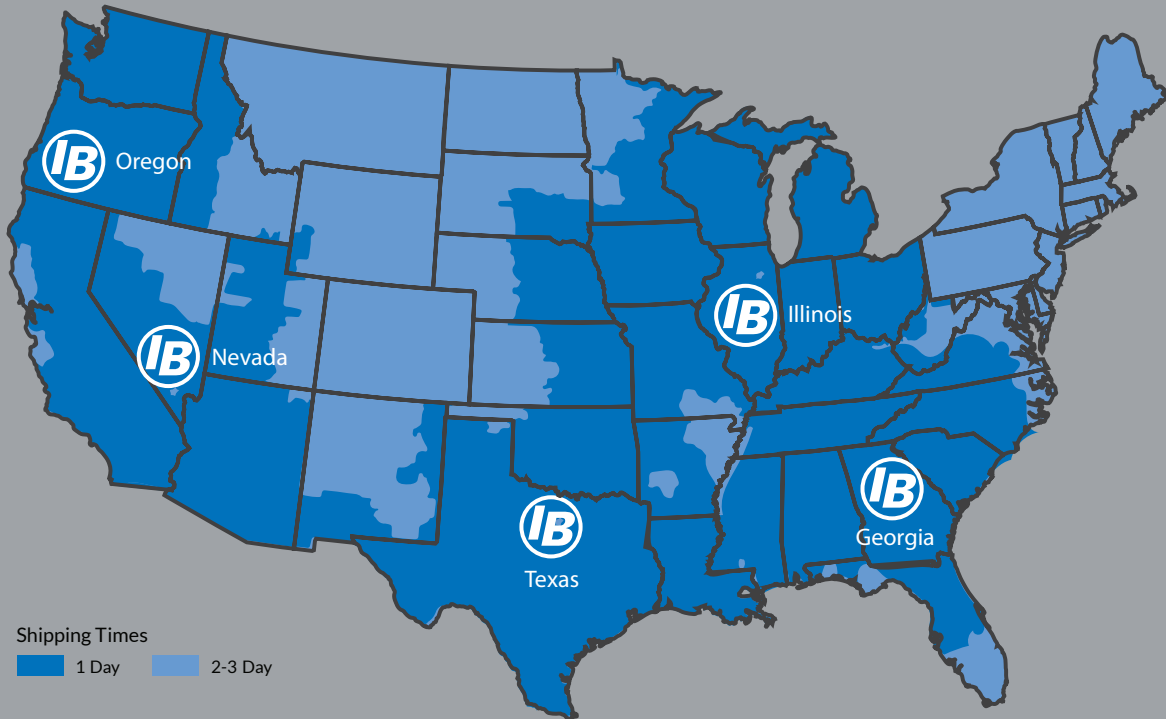
For Orders larger than 400 squares, IB may require 48 hours and will be shipped from our centralized distribution hub in Chicago direct to you or your job site.

For questions regarding our freight policy please contact IB Roof Systems at 800-426-1626 Ext. 2320 or email robyn.white@ibroof.com



All product details and information included this catalog is subject to change without notice. While IB Roof Systems makes every effort to provide the most accurate, up-to-date information, some items in our catalog may be incorrect. Please refer to corresponding technical data sheets for the most current details, and specifications of each product. IB Roof Systems is a Registered trade mark. ENERGY STAR is a registered trademark of the US government. LEED is a registered trademark of the U.S. Green Building Council.

MATERIALS MADE TO SHIP. TODAY.
CONTRACTOR TRAINING
EASIER HANDLING. FASTER. SAFER.
MORE COLORS - MORE OPPORTUNITIES
CUSTOM FABRICATED PRODUCTS



800.426.1626
IBroof.com

We Have You Covered.

Install IB with the confidence that you have selected the Industry's Best roofing materials. Through state of the art equipment and stringent quality control measures, we ensure that the products produced in our facilities throughout the United States meet the superior standards upon which we have built a reputation of excellence since 1978.

OREGON
5250 Highbanks Road
Suite 540
Springfield, OR 9747

NEVADA
2965 Lincoln Road
Las Vegas, NV 89115

TEXAS (HQ)
506 East. Dallas Rd.
Suite 300
Grapevine, TX 76051

ILLINOIS
1227 Lakeside Drive
Unit # 3
Romeoville, IL 60446

GEORGIA
8110 Troon Cir Ste 180
Austell, GA 30168

Product
Install Videos.

