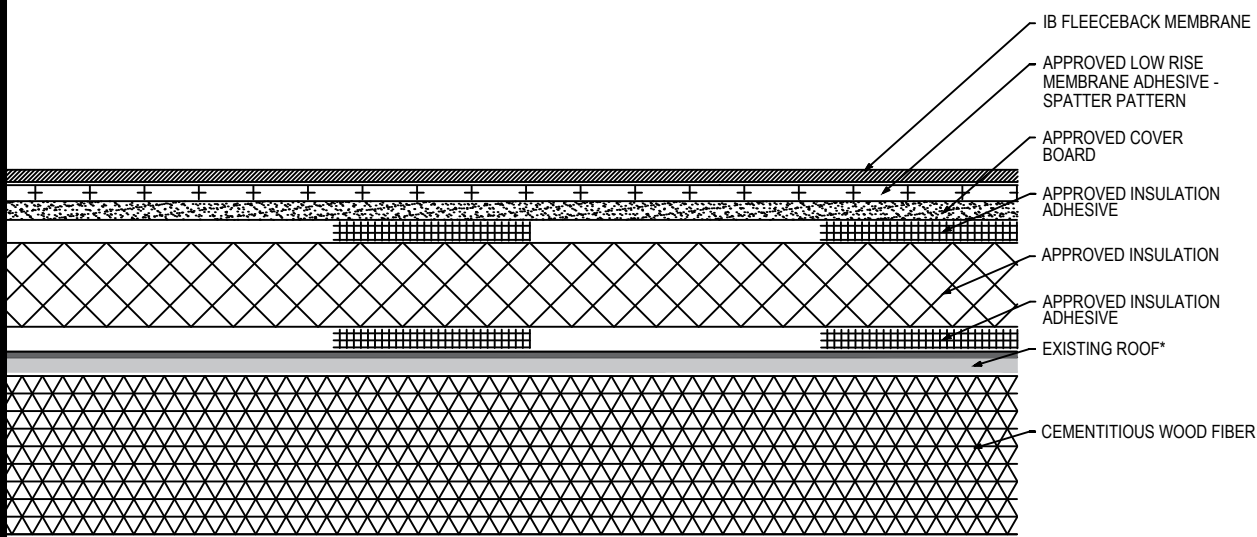


Fully Adhered Membrane (SP) - Cover Board (RB) - Insulation (RB) - Existing Roof - Cementitious Wood Fiber Deck (Recover)


Fire Rating / Max. Slope	Deck Type	Insulation (over Existing Asphaltic Roof)			Cover Board			IB Fleeceback Membrane Attachment	Max. Design Pressure**
		Type	Adhesive	Pattern	Type	Insulation Adhesive	Pattern		
<input type="checkbox"/> 1" Class "A" 1":12"	Cementitious Wood Fiber	Approved Insulation	BM, CR20, OB500, OSFA, PG1, or RSIA	Four continuous ribbons, 12" o.c.	Approved Cover Board	BM, CR20, OB500, OSFA, PG1, or RSIA	Four continuous ribbons, 12" o.c.	CR-20 Spatter Pattern 3.75 lbs/square	Minimum Req for IB Warranty
<input type="checkbox"/> 1" Class "A" 1":12"	Cementitious Wood Fiber	Min. 2" Insulfoam IX EPS Insulation or Min. 1.5" EnergyBoard II Insulation	OB500	Four continuous ribbons, 12" o.c.	1/4" DensDeck Prime or 1/4" Securock Gypsum Fiber Board	OB500	Four continuous ribbons, 12" o.c.	CR-20 Spatter Pattern 3.75 lbs/square	-120.0 psf (Class 240)
<input type="checkbox"/> 1" Class "A" 1":12"	Cementitious Wood Fiber	Min. 1.5" EnergyBoard II or AC Foam II Insulation	OSFA, PG1, or RSIA	Four continuous ribbons, 12" o.c.	1/4" DensDeck Prime or 1/4" Securock Gypsum Fiber Board	OSFA, PG1, or RSIA	Four continuous ribbons, 12" o.c.	CR-20 Spatter Pattern 3.75 lbs/square	-232.5 psf (Class 465)
<input type="checkbox"/> 1" Class "A" 1":12"	Cementitious Wood Fiber	Min. 1.0" EnergyBoard II or III, AC Foam II or III, or H-Shield or H-Shield CG Insulation	CR20	Four continuous ribbons, 12" o.c.	1/4" DensDeck Prime	CR20	Four continuous ribbons, 12" o.c.	CR-20 Spatter Pattern 3.75 lbs/square	-257.5 psf (Class 515)
<input type="checkbox"/> 1" Class "A" 1":12"	Cementitious Wood Fiber	Min. 1.0" EnergyBoard II or III, AC Foam II or III, or H-Shield or H-Shield CG Insulation	CR20	Four continuous ribbons, 12" o.c.	1/4" Securock Gypsum Fiber Board	CR20	Four continuous ribbons, 12" o.c.	CR-20 Spatter Pattern 3.75 lbs/square	-267.5 psf (Class 535)

Existing Roof: APP or SBS modified bitumen, smooth or granule surfaced asphaltic built-up roof only

Approved Insulation: IB EnergyBoard II or III, H-Shield or H-Shield CG

Approved Cover Board: DensDeck Prime, Securock Ultralight Coated Glass-Mat, Securock Gypsum Fiber Board, or DexCell FA Glass Mat Roof Board, minimum 1/4" thickness; or minimum 7/16" DexCell Cement Board, or minimum 1/2" IB HD ISO; or minimum 1/2" thick Structodek HD Primed

Approved Insulation Adhesive: BM = Polyset BoardMax, CR-20 = Polyset CR-20, OB500 = OlyBond 500 Adhesive Fastener, OSFA = Millennium One-Step Foamable Adhesive; PG-1 = Millennium PG-1 Pump Grade Adhesive; or RSIA = IB Rapid Set Insulation Adhesive; maximum bead spacing 12" o.c. unless otherwise indicated.

Fire Classification Note(s): 1" Class A up to 1":12" slope over any Class A, B or C built up roof system when utilized with any of the following roof insulations: IB Energy Board II, IB Energy Board III, ACFoam II, or ACFoam III and any of the following gypsum cover boards: minimum 1/4" DensDeck Prime, Securock Ultralight Coated Glass-Mat, or DexCell FA Glass Mat Roof Board, or minimum 7/16" DexCell Cement Board with all joints staggered 6-in. from the plywood joints, adhered with any UL Classified adhesive. 2 Maintains existing Classification for any Class A, B or C, coated or uncoated, insulated, or un-insulated, smooth surfaced, Type G3 mineral surfaced cap sheet or mineral surfaced modified bitumen membrane BUR system when utilized with minimum 1/4" Securock Gypsum Fiber Board. 3 Use of other IB Approved Insulations and/or IB Approved Cover Boards may not achieve UL Classification. 4 Recover over modified bitumen may not retain fire classification.

** Refer to Substrate Resistance table for required pull-out values.

For additional information about IB Roof Systems requirements, recommendations, installation details, approvals and limitations for the above assemblies, please refer to the latest edition of the IB Roof Systems Specifications Manual. For Technical Services please contact us at 800-426-1626.

Membranes:	Membrane Color:	Warranty Length***	Warranty Type***
<input type="checkbox"/> IB PVC Single-Ply FB 50 Mil	<input type="checkbox"/> White*	<input type="checkbox"/> 10 Year <input type="checkbox"/> 15 Year <input type="checkbox"/> 20 Year	<input type="checkbox"/> Total System - No Dollar Limit (NDL)
<input type="checkbox"/> IB PVC Single-Ply FB 60 Mil	<input type="checkbox"/> White*	<input type="checkbox"/> 15 Year <input type="checkbox"/> 20 Year <input type="checkbox"/> 25 Year	<input type="checkbox"/> Warranty Plus (WP)
<input type="checkbox"/> IB PVC Single-Ply FB 80 Mil	<input type="checkbox"/> White*	<input type="checkbox"/> 15 Year <input type="checkbox"/> 20 Year <input type="checkbox"/> 25 Year	<input type="checkbox"/> Commercial Limited Material Warranty (CLMW)
			<input type="checkbox"/> Residential Limited Material Warranty (RLMW)

* Meets CRRC, Title-24, & EnergyStar Standards

*** Refer to Warranty Selection Guide for Warranty Riders, Term Length Limitations, and eligibility requirements of the Warranty Program

Submitted By: Address: Email:	Project Name: Address:
--	---