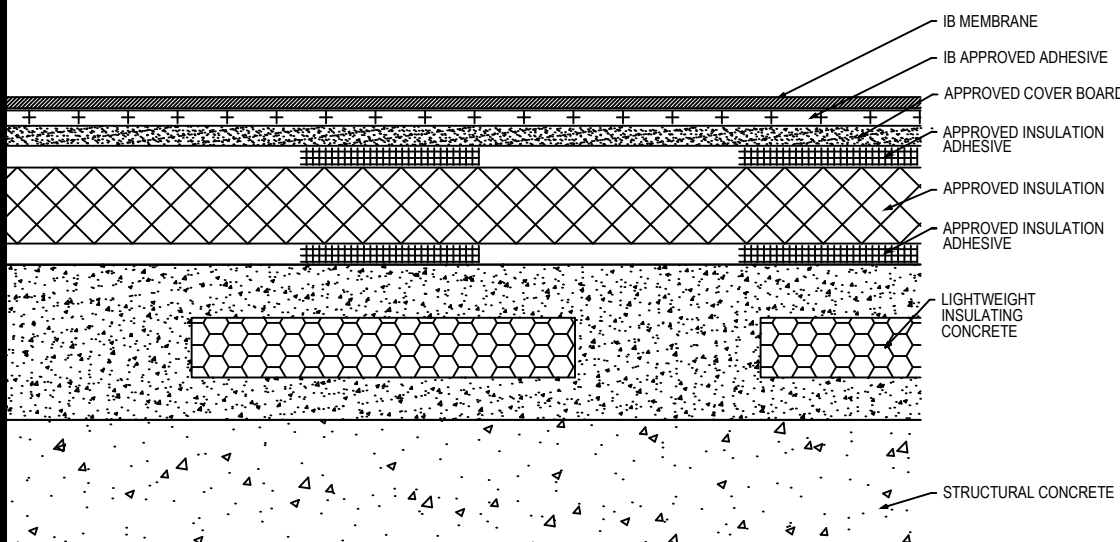







Fully Adhered Membrane - Cover Board (RB) - Insulation (RB) - Lightweight Insulating Concrete (Tear-Off)


| Fire Rating / Max. Slope | | Deck Type | | Insulation | | | Cover Board | | | IB Membrane Attachment | Max. Design Pressure** |
|---|--------------------------|------------------------|---|--|---|--------------------------------------|---|---|--------------------------------------|---|--------------------------------|
| | | Sub-Deck | LWIC | Type | Adhesive | Pattern | Type | Insulation Adhesive | Pattern | | |
|  | 1'Class 'A' Unlimited | Structural Concrete | Lightweight Concrete | Approved Insulation | BM, CR20, OB500, OSFA, PG1, or RSIA | Four continuous ribbons, 12" o.c. | Approved Cover Board | BM, CR20, OB500, OSFA, PG1, or RSIA | Four continuous ribbons, 12" o.c. | CR-20 Spatter Pattern 3.75 lbs/square | Minimum Req for IB Warranty |
|  | 1'Class 'A' Unlimited | Structural Concrete | Min 200 psi, 2" thick, Celcore | Approved Insulation | BM, CR20, OB500, OSFA, PG1, or RSIA | Four continuous ribbons, 12" o.c. | Approved Cover Board | BM, CR20, OB500, OSFA, PG1, or RSIA | Four continuous ribbons, 12" o.c. | CR-20 Spatter Pattern 3.75 lbs/square | Minimum Req for IB Warranty |
|  | 1'Class 'A' Unlimited | Structural Concrete | Min 200 psi, 2" thick, Elastizell | Min. 1.5" EnergyBoard II or AC Foam II Insulation | OB500 | Four continuous ribbons, 12" o.c. | Min. 1.5" EnergyBoard II or AC Foam II Insulation | OB500 | Four continuous ribbons, 12" o.c. | CR-20 Spatter Pattern 3.75 lbs/square | -112.5 psf (Class 225) |
|  | 1'Class 'A' Unlimited | Structural Concrete | Min 200 psi, 2" thick, Elastizell | Min. 1.5" EnergyBoard II or AC Foam II Insulation | OSFA, PG1, or RSIA | Four continuous ribbons, 12" o.c. | Min. 1.5" EnergyBoard II or AC Foam II Insulation | OSFA, PG1, or RSIA | Four continuous ribbons, 12" o.c. | CR-20 Spatter Pattern 3.75 lbs/square | -202.5 psf (Class 405) |
|  | 1'Class 'A' Unlimited | Structural Concrete | Min 200 psi, 2" thick, Mearlcrete | Min. 1.0" EnergyBoard II or III, AC Foam II or III, H-Shield or H-Shield CG Insulation | CR20 | Four continuous ribbons, 12" o.c. | Min. 1.0" EnergyBoard II or III, AC Foam II or III, H-Shield or H-Shield CG Insulation | CR20 | Four continuous ribbons, 12" o.c. | CR-20 Spatter Pattern 3.75 lbs/square | -215.0 psf (Class 430) |

Approved Lightweight Concrete: Celcore = Min. 200 psi, min. 2" thick Celcore Cellular Concrete over Structural Concrete, Elastizell = Min 200 psi, min 2" thick Elastizell Lightweight Insulating Concrete over Structural Concrete, Mearlcrete = Min 200 psi, min. 2" thick Mearlcrete over Structural Concrete.

Approved Insulation: Minimum 1-inch thickness - IB EnergyBoard II or III, H-Shield or H-Shield CG; or IB Approved UL Classified Polyisocyanurate, IB Approved UL Classified Expanded Polystyrene, IB Approved UL Classified Extruded Polystyrene Insulation.

Approved Cover Board: DensDeck Prime, Securock Ultralight Coated Glass-Mat Roof Board, Securock Gypsum Fiber Board, DexCell FA Glass Mat Roof Board, minimum 1/4" thickness; or minimum 7/16-in. thick DexCell Cement Board or minimum 1/2" IB HD ISO; or minimum 1/2" thick Structodek HD Primed

Approved Insulation Adhesive: BM = Polyset BoardMax, CR-20 = Polyset CR-20, OB500 = OlyBond 500 Adhesive Fastener, OSFA = Millennium One-Step Foamable Adhesive; PG-1 = Millennium PG-1 Pump Grade Adhesive; or RSIA = IB Rapid Set Insulation Adhesive; maximum bead spacing 12" o.c.

Fire Classification Note(s): 1UL Class 'A' up with unlimited slope when utilized with any UL Classified insulation, any thickness and minimum 1/4" DensDeck Prime, Securock Ultralight Coated Glass-Mat Roof Board, or DexCell FA Glass Mat Roof Board, or minimum 7/16-in. thick DexCell Cement Board, adhered and membrane adhered with IB Veribond 432 Bonding Adhesive at 1-gal/60-ft² or IB Water Borne 636 Adhesive at 1-gal/140-ft². 2UL Class 'A' up to 1/2":12" when utilized with minimum 1/2" IB HD ISO or H-Shield HD ISO. 3The use of other IB Approved Cover Boards may not achieve UL classification.

** Refer to Substrate Resistance table for required pull-out values.

For additional information about IB Roof Systems requirements, recommendations, installation details, approvals and limitations for the above assemblies, please refer to the latest edition of the IB Roof Systems Specifications Manual. For Technical Services please contact us at 800-426-1626.

| Membranes: | Membrane Color: | Warranty Length*** | Warranty Type*** |
|---|---|--|---|
| <input type="checkbox"/> IB PVC Single-Ply 50 Mil | <input type="checkbox"/> White* <input type="checkbox"/> Gray <input type="checkbox"/> Tan <input type="checkbox"/> Bronze <input type="checkbox"/> ChemGuard* | <input type="checkbox"/> 10 Year <input type="checkbox"/> 15 Year <input type="checkbox"/> 20 Year | <input type="checkbox"/> Total System - No Dollar Limit (NDL) |
| <input type="checkbox"/> IB PVC Single-Ply 60 Mil | <input type="checkbox"/> White* <input type="checkbox"/> Cool Sand* <input type="checkbox"/> Cool Stone* <input type="checkbox"/> Gray <input type="checkbox"/> Tan | <input type="checkbox"/> 15 Year <input type="checkbox"/> 20 Year <input type="checkbox"/> 25 Year | <input type="checkbox"/> Warranty Plus (WP) |
| <input type="checkbox"/> IB PVC Single-Ply 80 Mil | <input type="checkbox"/> White* <input type="checkbox"/> Gray <input type="checkbox"/> Tan <input type="checkbox"/> Bronze <input type="checkbox"/> ChemGuard* | <input type="checkbox"/> 20 Year <input type="checkbox"/> 25 Year <input type="checkbox"/> 30 Year | <input type="checkbox"/> Commercial Limited Material Warranty (CLMW) |
| | | | <input type="checkbox"/> Residential Limited Material Warranty (RLMW) |

* Meets CRRC, Title-24, & EnergyStar Standards

*** Refer to Warranty Selection Guide for Warranty Riders, Term Length Limitations, and eligibility requirements of the Warranty Program

Submitted By:
Address:
Email:
Project Name:
Address: