

Technical Data Sheet

IB® Concealed Mount 2-Piece Counter Flashing IB Roof Systems®

Product Description:

IB Concealed Mount Two-Piece Counter Flashing system with surface mounted reglet/receiver punched for fastening 12" on center. Snap-on metal skirt flashing can be removed for re-roofing or maintenance.

Features:

Reglets are primarily made from mill aluminum or prefinished Kynar 500® aluminum sheet. The two-piece reglet and flashing details are usually fabricated with an .050" reglet head and an .032" flashing. Special colors or finishes are available. Finish setups or minimum quantities may be required. Copper or stainless steel reglets are also available upon request.

Sizes:

Standard counter flashing face size is 5-3/4" wide x 10' long

Special Order Materials & Finishes:

Material	Thickness	Cover Finish
Aluminum	0.032"	Mill Finish
	0.040"	Prefinished Kynar®
	0.050"	Post Finished Kynar®
Galvanized	22 Gauge	Prefinished Anodized
	24 Gauge	
Stainless Steel	Upon Request	
Copper	Upon Request	

Colors:

All Colors are special order:

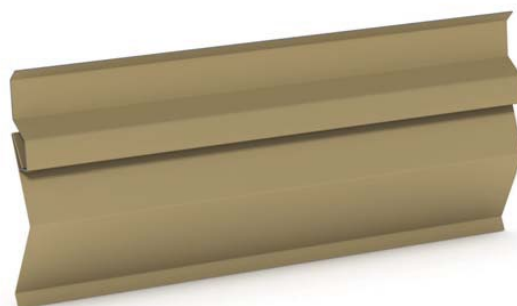
White	Bronze	Tan	Gray
-------	--------	-----	------

Concord Cream	Redwood	Siam Blue	Medium Bronze
Sandstone	Mission Red	Black	Rawhide
Chocolate Brown	Ascot White	Forest Green	Patina Green
Charcoal Gray	Regal Blue	Turquoise	Shale Gray
Slate Blue	Hartford Green	Boysenberry	Hemlock Green
Bright Red	Coppertone	Antique Patina	Silversmith
Champagne	Titanium		

Packaging includes:

- Receiver piece
- Snap Fascia
- Splice Piece

Front



Back



Product details stated are nominal as manufactured, and the results of tests and/or calculations and therefore are non-binding and do not represent a guarantee or warranted characteristics. User and/or designer are responsible for confirming suitable performance for specific application and conforming with all applicable laws and regulations

Installation:

Refer to IB Specifications and Construction Details for additional installation requirements. Ensure that roofing membrane is continued up the side wall far enough to be covered by the raised rigid retainer/clip base plate. Position the raised rigid retainer/clip base plate as shown in the detail drawings. Attach using the mechanical fasteners (by installer). Locate fasteners in each pre-punched hole. Space each 10'-0" section by 1/8" (or 1/4" in cold weather) to allow for thermal expansion. Position the snap on facing cover as shown in the detail drawings (parallel to the raised rigid retainer/clip base plate). Hook the bottom of the snap on facing cover on the bottom lip of the raised rigid retainer/clip base plate and push the top of the snap on facing cover until it snaps it into position. Lap each adjoining piece of IB Snap Fascia Assembly a min. of 1" to allow for thermal expansion. Stagger all fascia cover seams so that they do not align with raised rigid retainer/clip base plate seams. Apply a continuous (3/8") wide bead of sealant to the top side of the IB Snap Fascia (see detail drawing). Field bevel cut raised rigid retainer/clip base plate and IB Snap Fascia for appropriate corner.